

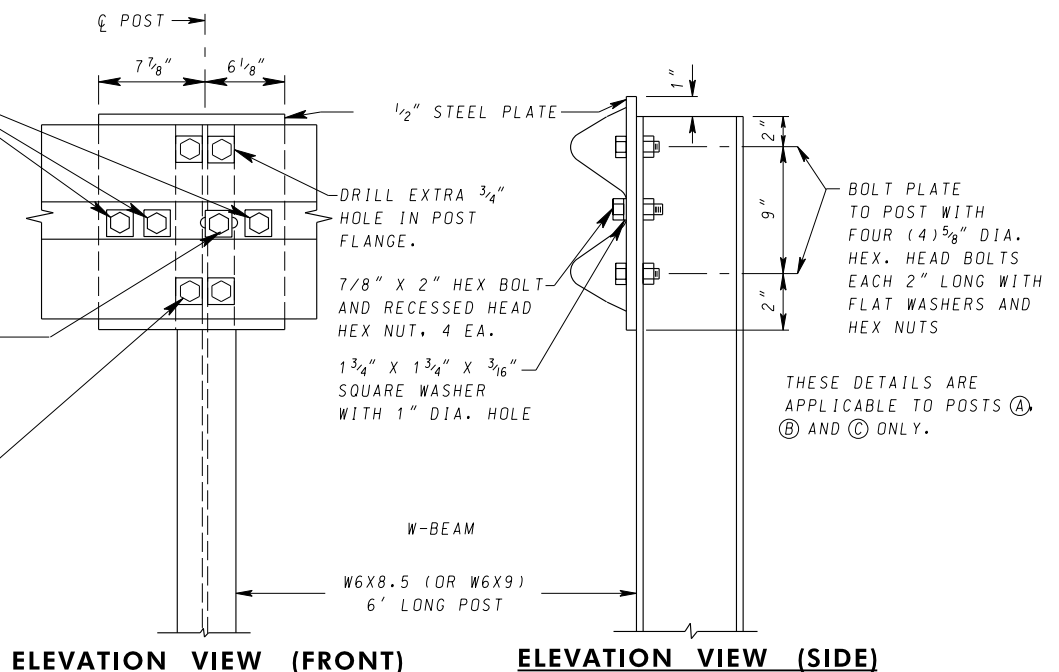
NOTES


1. THE 1/2" STEEL PLATE SHALL CONFORM TO THE REQUIREMENTS OF A-36. THE PLATE SHALL BE BOLTED TO POSTS (A), (B) AND (C) BURIED IN THE CUT SLOPE.
2. FIELD DRILLED HOLES SHALL BE COATED WITH ZINC RICH PAINT.

THREE (3) 1" DIA. HOLES TO BE FIELD DRILLED IN W-BEAM ELEMENT AND ATTACHED WITH 7/8" DIA. HEX. HEAD BOLTS 2" LONG EACH WITH ONE SQUARE WASHER AND RECESSED HEAD HEX NUT

1" DIA. HOLE TO BE FIELD DRILLED THROUGH W-BEAM AND THROUGH POST FLANGE. ATTACH W-BEAM WITH 7/8" HEX. HEAD BOLT 2" LONG WITH ONE SQUARE WASHER AND HEX NUT

DRILL EXTRA 3/4" DIA. HOLE IN POST FLANGE.



| | | | |
|-----------------------------|---|--|--|
| SPECIFICATION 606 | CATEGORY CODE ITEMS | <div style="text-align: center;">  MARYLAND DEPARTMENT OF TRANSPORTATION STATE HIGHWAY ADMINISTRATION </div> <p>STANDARDS FOR HIGHWAYS AND INCIDENTAL STRUCTURES</p> <p>TRAFFIC BARRIER W-BEAM BURIED-IN-BACKSLOPE END TREATMENT (TYPE A) – ANCHORAGE</p> <p>STANDARD NO. MD 605.01-03</p> | |
| APPROVED | <i>L. J. Macaluso</i> DIRECTOR - OFFICE OF HIGHWAY DEVELOPMENT | | |
| APPROVAL REVISIONS | APPROVAL FEDERAL HIGHWAY ADMINISTRATION | | |
| APPROVAL 4-6-88 | APPROVAL 4-22-90 | | |
| REVISED 3-15-06 | REVISED 4-5-06 | | |
| REVISED 9-20-19 | REVISED 8-15-19 | | |
| REVISED 4-9-25 | REVISED 4-3-25 | | |