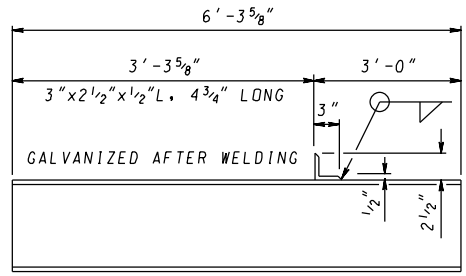
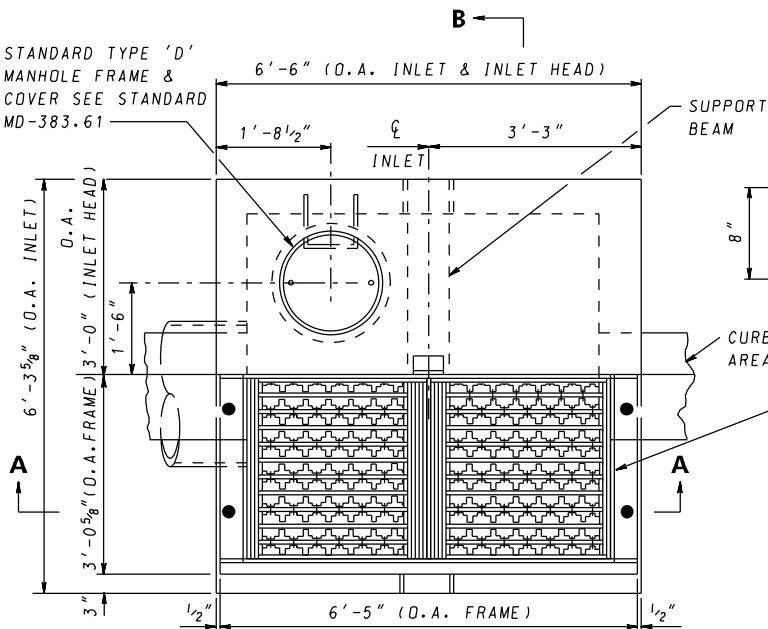


STANDARD TYPE 'D'
MANHOLE FRAME &
COVER SEE STANDARD
MD-383.61



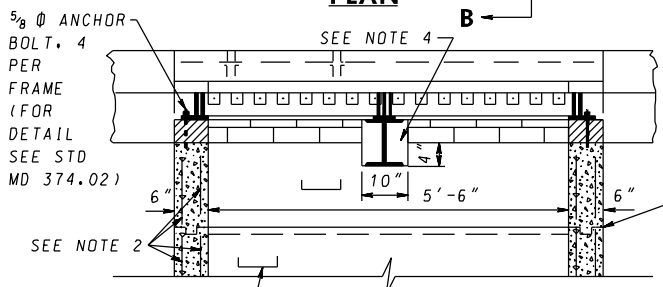
SUPPORT BEAM
W8x31 (GALVANIZED)

STANDARD WR FRAME & GRATE
FOR DETAILS SEE STANDARD
MD-374.02 & MD-374.03

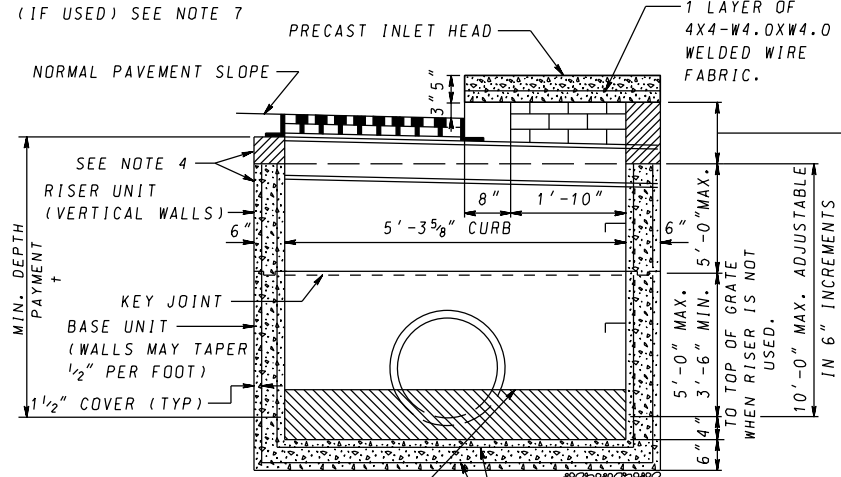
GENERAL NOTES

1. CONCRETE TO BE MIX NO.6 (4500 PSI).
2. WALL REINFORCING SHALL BE 2 LAYERS OF 4X4 - W6.0 X W6.0 WELDED WIRE FABRIC WITH 1 1/2" COVER FROM EACH SIDE. BASE REINFORCING SHALL BE 2 LAYERS OF 4X4 - W12.0 X W12.0 WELDED WIRE FABRIC WITH 1 1/2" COVER FROM EACH SIDE.
3. THREADED PLASTIC INSERTS TO BE PROVIDED FOR HANDLING.
4. GRADE AND SLOPE ADJUSTMENTS COMPLETED IN THE FIELD USING CONCRETE MIX NO.6.
5. PIPE OPENINGS TO BE PROVIDED AS REQUIRED FOR SIZE, LOCATION AND INVERT ELEVATIONS REFER TO CONSTRUCTIONS PLANS.
6. PLACEMENT OF SUBGRADE DRAINAGE WILL BE AS DIRECTED BY THE ENGINEER OR AS NOTED ON THE CONSTRUCTION PLANS.
7. LADDER RUNGS SHALL BE IN ACCORDANCE STD MD 383.91 AND MD 383.92 OR AS DIRECTED BY THE ENGINEER.
8. MINIMUM DEPTH PAYMENT PER "EACH" INLET INCLUDES DEPTHS UP TO 3'-6". VERTICAL DEPTH PAYMENT PER LINEAR FOOT FOR DEPTHS IN EXCESS OF 3'-6".
9. FROM CURB LINE/SIDEWALK, INLET HAS BEEN DESIGNED FOR HS-25 LOADING, ACCORDING TO AASHTO LRFD BRIDGE DESIGN SPECIFICATIONS.

PLAN



SECTION A-A



SECTION B-B

INVERT TO BE CONCRETE OR BRICK. SLOPE 2" PER FOOT TOWARD OUTLET OR AS DIRECTED (TO BE PROVIDED IN FIELD)

THIS PORTION OF INLET SHALL BE PROVIDED IN THE FIELD AND SHALL BE CONSTRUCTED OF BRICK MASONRY OR REINFORCED CONCRETE MIX NO.6. BRICK FOR MASONRY TO COMPLY WITH LATEST S.H.A. SPECIFICATIONS.

SPECIFICATION 305	CATEGORY CODE ITEMS
APPROVED	DIRECTOR - OFFICE OF HIGHWAY DEVELOPMENT
	APPROVAL • SHA REVISIONS
	APPROVAL • FEDERAL HIGHWAY ADMINISTRATION
	APPROVAL 6-4-84
	APPROVAL 8-1-84
	REVISIONS 10-1-01
REVISIONS 10-7-14	
REVISIONS 9-29-14	
REVISIONS	REVISIONS

Maryland Department of Transportation
STATE HIGHWAY ADMINISTRATION
STANDARDS FOR HIGHWAYS AND INCIDENTAL STRUCTURES

PRECAST WRM INLET

STANDARD NO. MD 374.22