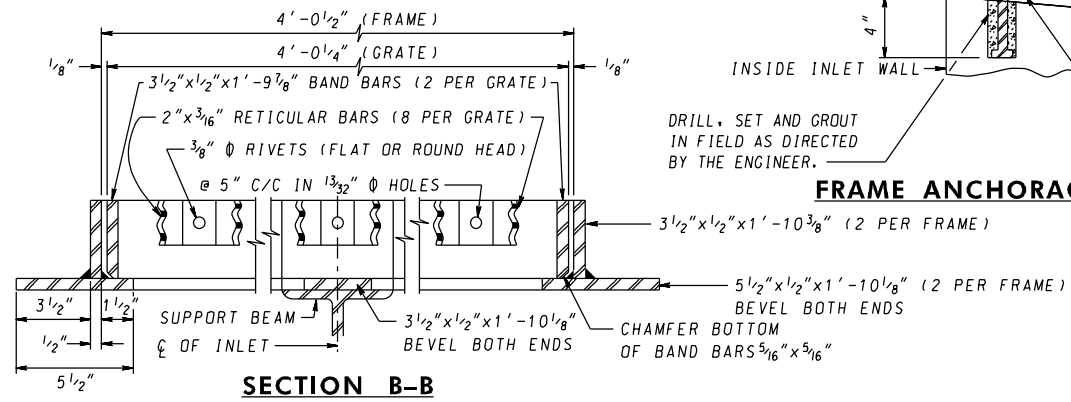
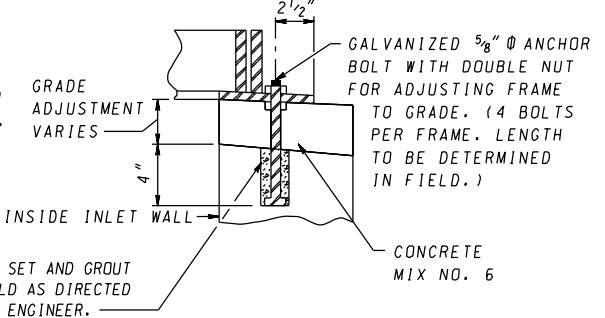


PLAN GENERAL NOTES

1. FRAMES & GRATES TO BE SQUARE, FLAT & TRUE.
2. STRUCTURAL STEEL SHALL BE A.S.T.M. A-36.
3. FRAMES & GRATES TO BE GALVANIZED AFTER FABRICATION IN ACCORDANCE WITH A.S.T.M. A-123.
4. SEE LATEST S.H.A. SPECIFICATIONS.
5. MANUFACTURER TO VERIFY THAT GRATE AND FRAME HAVE BEEN DESIGNED FOR HS-25 LOADING, ACCORDING TO AASHTO LRFD BRIDGE DESIGN SPECIFICATIONS.



SPECIFICATION 305	CATEGORY CODE ITEMS
APPROVED	DIRECTOR - OFFICE OF HIGHWAY DEVELOPMENT
	APPROVAL • SHA REVISIONS
	APPROVAL • FEDERAL HIGHWAY ADMINISTRATION
	APPROVAL 2-28-75
	APPROVAL 5-12-75
	APPROVAL 8-1-84
REVISED 10-1-01	REVISED 8-1-84
REVISED 10-7-14	REVISED 9-29-14
REVISED	REVISED

Maryland Department of Transportation
STATE HIGHWAY ADMINISTRATION
 STANDARDS FOR HIGHWAYS AND INCIDENTAL STRUCTURES
STANDARD NR & NRM INLET
FRAME & GRATE
STANDARD NO. MD 374.12