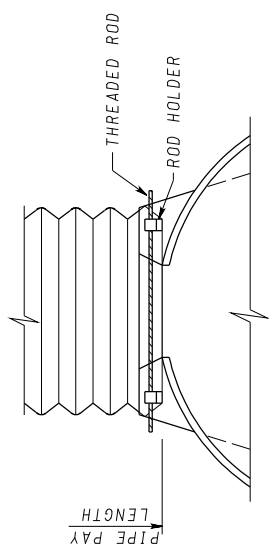


TYPE 1

(FOR 12" THRU 24" ONLY)



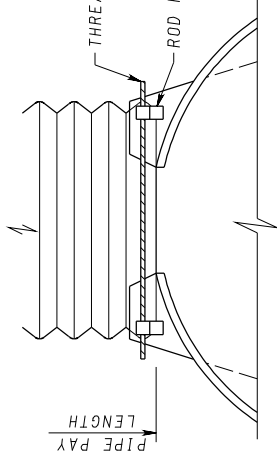
TYPE 2

(FOR 30" THRU 36" ONLY)

CONNECTIONS FOR ROUND PIPE

NOTE:

PIPES AND CONNECTION BANDS SHALL CONFORM TO APPLICABLE SECTION OF THE STANDARD SPECIFICATIONS AND TO AASHTO REQUIREMENTS.



TYPE 2

(FOR 17"x13" THRU 42"x29")

CONNECTIONS FOR PIPE ARCH

SPECIFICATION

CATEGORY CODE ITEMS

APPROVED

Kate G. McCall
DIRECTOR - OFFICE OF HIGHWAY DEVELOPMENT



APPROVAL • SHA REVISIONS	APPROVAL • FEDERAL HIGHWAY ADMINISTRATION
APPROVAL 8-28-86	APPROVAL 12-12-86
REVISED 10-1-01	REVISED 7-27-09
REVISED 7-1-09	REVISED
REVISED	REVISED

**Maryland Department of Transportation
STATE HIGHWAY ADMINISTRATION**
STANDARDS FOR HIGHWAYS AND INCIDENTAL STRUCTURES

**STANDARD CONNECTIONS
METAL END SECTIONS**

STANDARD NO. MD 370.11