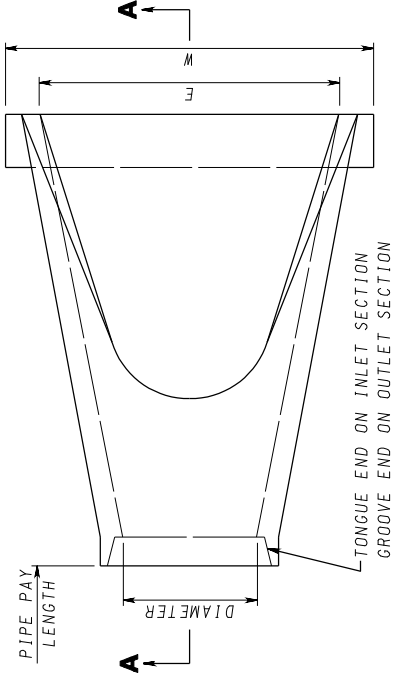


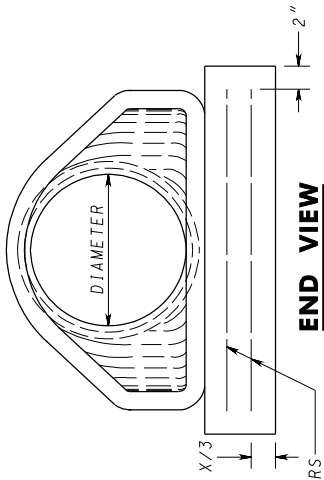
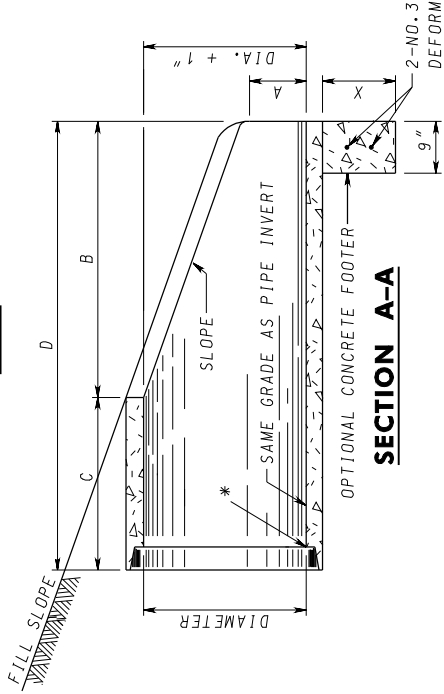
NOTES

1. CONTRACTOR HAS OPTION OF FURNISHING END SECTIONS CONFORMING TO DETAILS ON THIS SHEET OR END SECTIONS CONFORMING TO DETAILS ON STANDARD MD 368.02.
2. END SECTIONS MUST BE REINFORCED TO CONFORM TO ASTM - CLASS IV REINFORCED CONCRETE PIPE.
3. CONCRETE FOOTER SHALL BE USED WHEN SPECIFIED ON THE PLANS. COST OF CONCRETE FOOTER TO BE INCLUDED IN PRICE OF END SECTION. CONCRETE TO BE MIX. NO.2. REINFORCEMENT TO BE NO.3 BARS.



PLAN

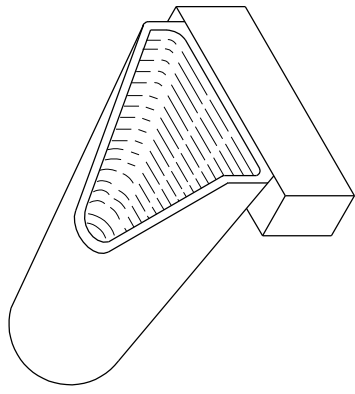
* INVERT ELEVATION TO BE AT THE PIPE END OF THE STANDARD END SECTION. ELEVATIONS TO BE NOTED ON THE CONSTRUCTION PLANS.



QUANTITIES FOR ESTIMATING PURPOSES ONLY

DIA. SLOPE	DIMENSIONS						QUANTITIES			
	A	B	C	D	E	W	X	CONC. C.Y.	STEEL LBS.	
12"	3:1	4"	2'-0"	4'-0 ⁷ / ₈ "	6'-0 ⁷ / ₈ "	2'-0"	3'-0"	12"	0.08	2.01
15"	3:1	6 ¹ / ₂ "	2'-4"	3'-10"	6'-2"	2'-6"	3'-6"	12"	0.10	2.38
18"	3:1	10 ¹ / ₄ "	2'-2"	4'-0"	6'-2"	3'-0"	4'-0"	12"	0.11	2.76
21"	3:1	9"	3'-0"	3'-1 ¹ / ₂ "	6'-1 ¹ / ₂ "	3'-6"	4'-6"	12"	0.13	3.13
24"	3:1	11"	3'-7"	2'-8"	6'-3"	4'-0"	5'-0"	15"	0.17	3.51
27"	3:1	10 ¹ / ₂ "	4'-1 ¹ / ₂ "	2'-0"	6'-1 ¹ / ₂ "	4'-6"	5'-6"	15"	0.19	3.89
30"	3:1	1'-1"	4'-5"	1'-10"	6'-3"	5'-0"	6'-0"	15"	0.21	4.26
33"	3:1	1'-2"	4'-7"	2'-2"	6'-9"	5'-6"	6'-6"	15"	0.23	4.64
36"	3:1	1'-3 ¹ / ₂ "	5'-3"	3'-1"	8'-4"	6'-0"	7'-3"	15"	0.25	5.20

SEE NOTE 3 ABOVE FOR CONCRETE FOOTER



ISOMETRIC VIEW

SPECIFICATION **305**

CATEGORY CODE ITEMS

APPROVED *Kat G. McCall*
DIRECTOR - OFFICE OF HIGHWAY DEVELOPMENT



APPROVAL • SHA REVISIONS
 APPROVAL 8-28-86
 REVISION 3-15-06
 APPROVAL 12-12-86
 REVISION 4-05-06
 APPROVAL FEDERAL HIGHWAY ADMINISTRATION
 REVISION 7-27-09

Maryland Department of Transportation
STATE HIGHWAY ADMINISTRATION
 STANDARDS FOR HIGHWAYS AND INCIDENTAL STRUCTURES
STANDARD CONCRETE END SECTION
ROUND CONCRETE PIPE

STANDARD NO. MD 368.01