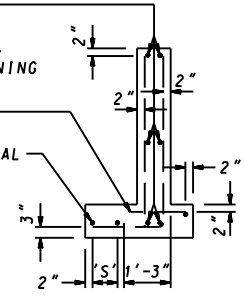


PLAN

NO.4 BARS HORIZONTAL @ 1'-7" MAX
C/C BOTH FACES-LAP 1'-3" TOP
AND BOTTOM BARS @ CORNER BOTH
WINGWALLS ALL ENDWALLS.

NO.4 STRAIGHT BARS HORIZONTAL
@ 1'-0" C/C BOTH SIDE OF OPENING
FOR 36"DIA. TO 60"DIA. PIPE
ENDWALLS INCLUSIVE.

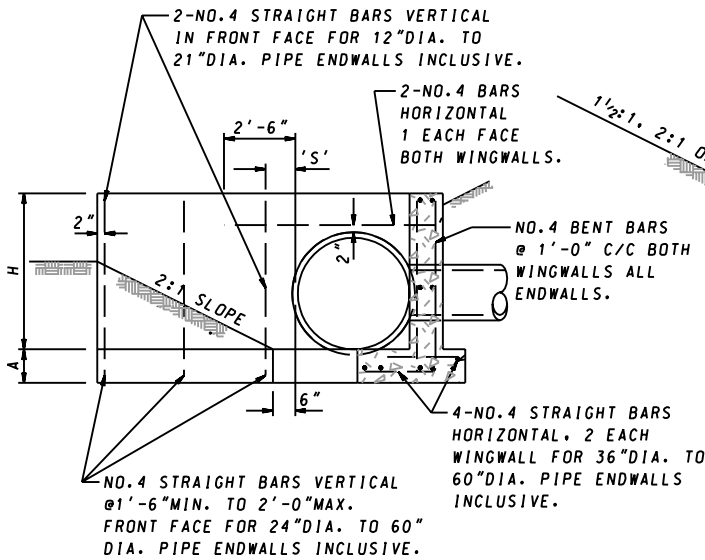
2-NO. 4 STRAIGHT BARS HORIZONTAL
1 EACH WINGWALL ALL ENDWALLS.



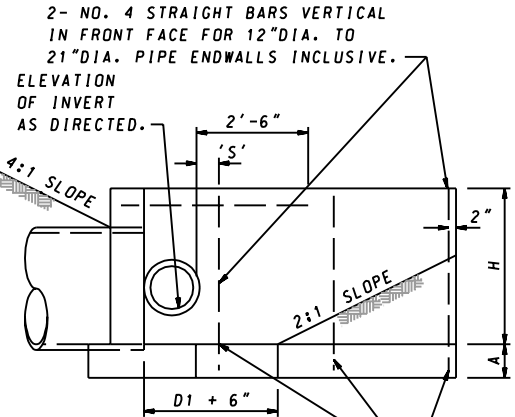
DISPOSITION OF BARS DETAIL

NOTE

FOR DIMENSIONS AND QUANTITIES SEE
TABLES ON STANDARD MD 362.01-01



SECTION A-A



END VIEW

NO. 4 STRAIGHT BARS VERTICAL
@ 1'-6" MIN. TO 2'-0" MAX.
FRONT FACE FOR 24"DIA. TO 60"
DIA. PIPE ENDWALL INCLUSIVE.

GENERAL NOTES

SPECIFICATIONS: LATEST S.H.A.
CONCRETE SHALL BE MIX NO.2
REINFORCING: DEFORMED STEEL BARS NO.4
CHAMFER: ALL EXPOSED EDGES 1"x1" OR AS DIRECTED
SOD: PLACE SOD, 3' WIDE, AROUND ENDWALL AS
INDICATED ON THE PLANS.

'S' DISTANCE

4" FOR 12"DIA. TO 18"DIA. PIPES INCLUSIVE.
6" FOR 21"DIA. TO 36"DIA. PIPES INCLUSIVE.
8" FOR 42"DIA. TO 60"DIA. PIPES INCLUSIVE.

SPECIFICATION 305	CATEGORY CODE ITEMS
APPROVED <i>Kirk G. McCall</i> DIRECTOR - OFFICE OF HIGHWAY DEVELOPMENT	
	APPROVAL • SHA REVISIONS
	APPROVAL 8-28-86
	REVISED 10-1-01
	REVISED
APPROVAL • FEDERAL HIGHWAY ADMINISTRATION	
APPROVAL 12-12-86	
REVISED	
REVISED	

Maryland Department of Transportation
STATE HIGHWAY ADMINISTRATION
STANDARDS FOR HIGHWAYS AND INCIDENTAL STRUCTURES

STANDARD TYPE H ENDWALL
METAL OR CONCRETE ROUND PIPE

STANDARD NO. MD 362.01