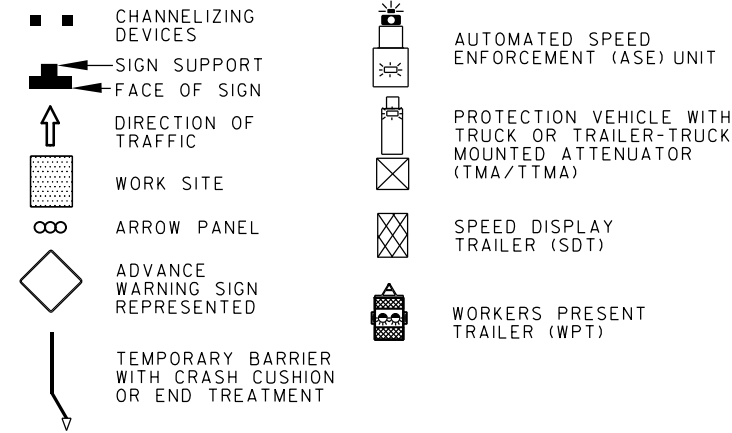


TEMPORARY TRAFFIC CONTROL TYPICAL APPLICATION

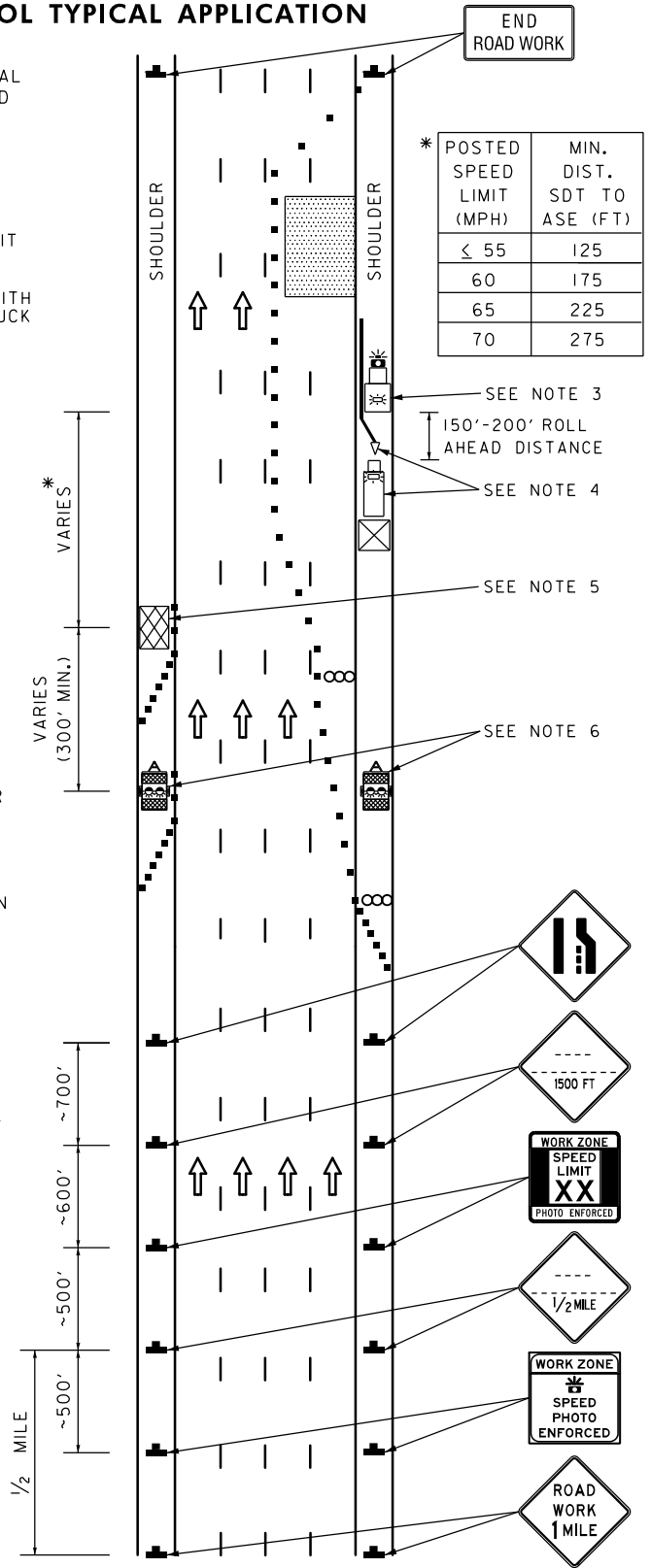
IMPORTANT:
THIS DRAWING SHALL BE USED IN COMBINATION WITH THE GENERAL NOTES MD 104.00-01 - MD 104.00-18 AND STANDARD DETAILS MD 104.01-01 - MD 104.01-81.

KEY:



NOTES:

1. LOCATIONS OF AUTOMATED SPEED ENFORCEMENT (ASE) UNIT, SPEED DISPLAY TRAILER (SDT), WORKERS PRESENT TRAILER (WPT), AND LOCATIONS AND SIZES OF ALL ASE SIGNS SHALL BE DETERMINED AS DIRECTED BY THE ASE REPRESENTATIVE IN THE OFFICE OF TRAFFIC AND SAFETY. THESE ARE ESTABLISHED AFTER THE ASE REPRESENTATIVE HAS VISITED THE WORK SITE.
2. THERE SHALL BE A MINIMUM OF TWO SETS OF ASE SIGNS (FOUR TOTAL) DISPLAYED IN ADVANCE OF THE ASE UNIT. PLACE ADDITIONAL ASE SIGNS ON OR IN THE VICINITY OF INTERCHANGE RAMP IN THE WORK ZONE AND ALONG LONGER WORK ZONES.
3. FLASHING BLUE LIGHTS ON ASE UNIT SHALL BE ACTIVATED WHEN ASE IS IN USE.
4. THE ASE UNIT SHALL BE PROTECTED BY A TEMPORARY CONCRETE BARRIER, W-BEAM, OR BY A DEDICATED PROTECTION VEHICLE WITH TRUCK OR TRAILER-TRUCK MOUNTED ATTENUATOR (TMA/TTMA). IF USED, THE PLACEMENT OF THE PROTECTION VEHICLE SHALL BE AS SHOWN ON THE FIGURE WHILE ALLOWING FOR THE ROLL AHEAD DISTANCE ANTICIPATED WITH IMPACT. THE PROTECTION VEHICLE PROVIDED FOR THE ASE UNIT SHALL BE IN ADDITION TO ANY PROTECTION VEHICLES USED TO PROTECT THE WORK ACTIVITIES.
5. THE SDT SHALL BE POSITIONED IN ADVANCE OF THE ASE UNIT AND CAN BE POSITIONED ON EITHER SIDE OF THE ROAD. IF NOT PROTECTED BY A BARRIER, THE TRAILER SHALL BE DELINEATED WITH A MINIMUM OF SEVEN CHANNELIZING DEVICES (REFER TO MD 104.01-22).
6. THE WPT SHOULD BE POSITIONED IN ADVANCE OF THE SDT. FLASHING YELLOW LIGHTS ON WPT SHALL BE ACTIVATED WHILE WORKERS ARE PRESENT IN THE WORK ZONE, AND DEACTIVATED WHEN WORKERS ARE NOT PRESENT. IF NOT PROTECTED BY A BARRIER OR POSITIONED WITHIN THE LANE CLOSURE, THE TRAILER SHALL BE DELINEATED WITH A MINIMUM OF SEVEN CHANNELIZING DEVICES (REFER TO MD 104.01-22).
7. FLEXIBLE ASE WILL TYPICALLY BE USED WITH WORK DURATIONS 60 DAYS OR LESS.
8. THIS STANDARD SHALL BE USED IN COMBINATION WITH OTHER APPLICABLE STANDARDS FOR LANE CLOSURE.



SPECIFICATION	CATEGORY CODE ITEMS
104	SECTION 100
APPROVED	<i>Cedric Ward</i> DIRECTOR - OFFICE OF TRAFFIC AND SAFETY
APPROVAL REVISIONS	APPROVAL FEDERAL HIGHWAY ADMINISTRATION
APPROVAL 1-30-25	APPROVAL 1-24-25
REVISED	REVISED
REVISED	REVISED
REVISED	REVISED

MARYLAND DEPARTMENT OF TRANSPORTATION
STATE HIGHWAY ADMINISTRATION

STANDARDS FOR HIGHWAYS AND INCIDENTAL STRUCTURES

FLEXIBLE AUTOMATED SPEED ENFORCEMENT

STANDARD NO.	MD 104.06-26B
--------------	---------------