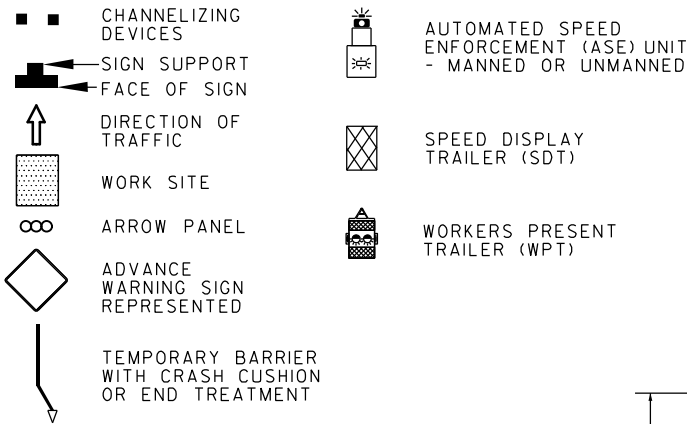


## TEMPORARY TRAFFIC CONTROL TYPICAL APPLICATION

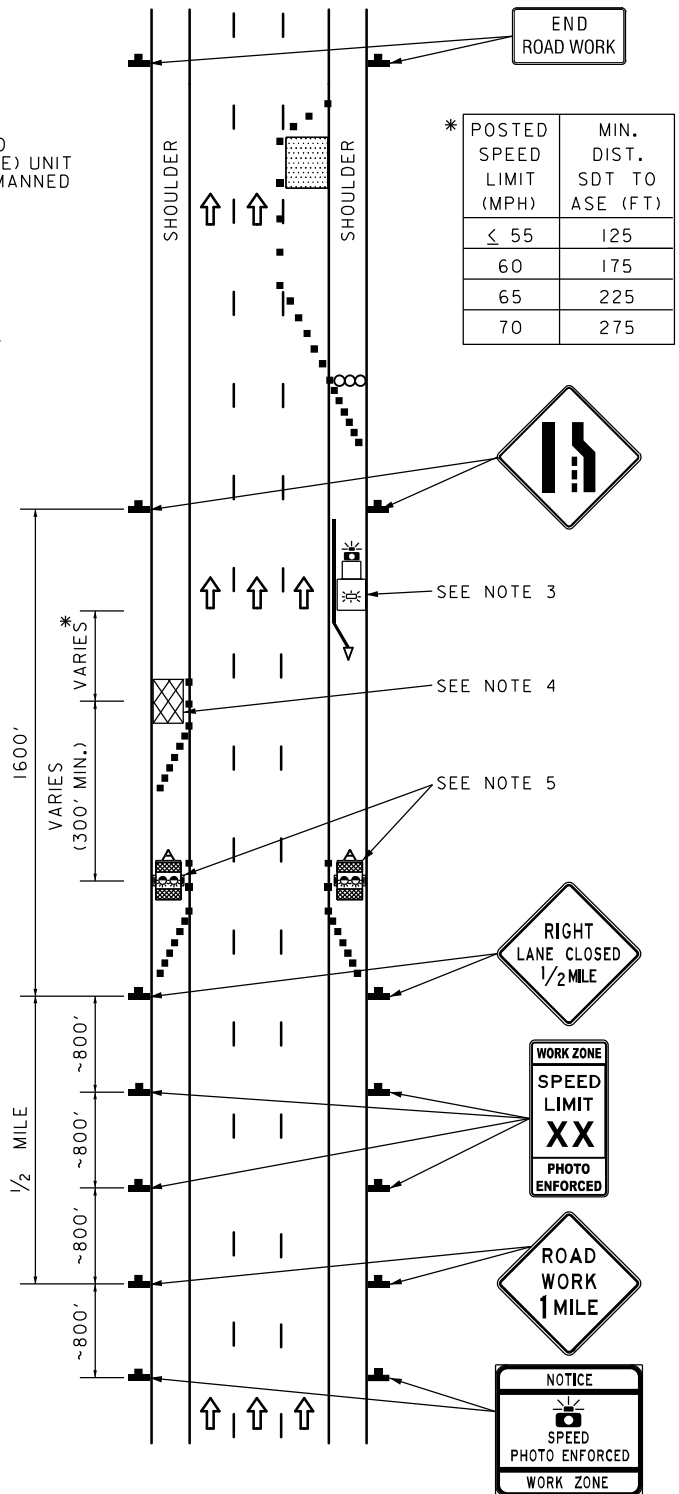
**IMPORTANT:**  
THIS DRAWING SHALL BE USED IN COMBINATION WITH THE GENERAL NOTES MD 104.00-01 - MD 104.00-18 AND STANDARD DETAILS MD 104.01-01 - MD 104.01-81.

**KEY:**



**NOTES:**

1. LOCATIONS OF AUTOMATED SPEED ENFORCEMENT (ASE) UNIT, SPEED DISPLAY TRAILER (SDT), WORKERS PRESENT TRAILER (WPT), AND LOCATIONS AND SIZES OF ALL ASE SIGNS SHALL BE DETERMINED AS DIRECTED BY THE ASE REPRESENTATIVE IN THE OFFICE OF TRAFFIC AND SAFETY. THESE ARE ESTABLISHED AFTER THE ASE REPRESENTATIVE HAS VISITED THE WORK SITE.
2. THERE SHALL BE A MINIMUM OF TWO SETS OF ASE SIGNS (FOUR TOTAL) DISPLAYED IN ADVANCE OF THE ASE UNIT. PLACE ADDITIONAL ASE SIGNS ON OR IN THE VICINITY OF INTERCHANGE RAMPS IN THE WORK ZONE AND ALONG LONGER WORK ZONES.
3. THE ASE UNIT SHALL BE PROTECTED BY TEMPORARY CONCRETE BARRIER OR W-BEAM. FLASHING BLUE LIGHTS ON ASE UNIT SHALL BE ACTIVATED WHEN ASE IS IN USE.
4. THE SDT SHALL BE POSITIONED IN ADVANCE OF THE ASE UNIT AND CAN BE POSITIONED ON EITHER SIDE OF THE ROAD. IF NOT PROTECTED BY A BARRIER, THE TRAILER SHALL BE DELINEATED WITH A MINIMUM OF SEVEN CHANNELIZING DEVICES (REFER TO MD 104.01-22).
5. THE WPT SHOULD BE POSITIONED IN ADVANCE OF THE SDT. FLASHING YELLOW LIGHTS ON WPT SHALL BE ACTIVATED WHILE WORKERS ARE PRESENT IN THE WORK ZONE, AND DEACTIVATED WHEN WORKERS ARE NOT PRESENT. IF NOT PROTECTED BY A BARRIER, THE TRAILER SHALL BE DELINEATED WITH A MINIMUM OF SEVEN CHANNELIZING DEVICES (REFER TO MD 104.01-22).
6. STATIC ASE WILL TYPICALLY BE USED WITH WORK DURATIONS GREATER THAN 60 DAYS.
7. THIS STANDARD SHALL BE USED IN COMBINATION WITH OTHER APPLICABLE STANDARDS FOR LANE CLOSURE.



<b>SPECIFICATION</b>	104	<b>CATEGORY CODE ITEMS</b>	SECTION 100
<b>APPROVED</b>	<i>Cedric Ward</i> DIRECTOR - OFFICE OF TRAFFIC AND SAFETY		
<b>APPROVAL</b>	SHA	<b>APPROVAL</b>	FEDERAL
REVISIONS	1-30-25	REVISIONS	HIGHWAY ADMINISTRATION
APPROVAL	1-30-25	APPROVAL	1-24-25
REVISID		REVISID	
REVISID		REVISID	
REVISID		REVISID	

**MDOT** MARYLAND DEPARTMENT OF TRANSPORTATION  
STATE HIGHWAY ADMINISTRATION

STANDARDS FOR HIGHWAYS AND INCIDENTAL STRUCTURES

### STATIC AUTOMATED SPEED ENFORCEMENT

**STANDARD NO.**

**MD 104.06-26A**