

TEMPORARY TRAFFIC CONTROL TYPICAL APPLICATION

STEP 5 - TEMPORARY TRAFFIC CONTROL ACTIVITIES

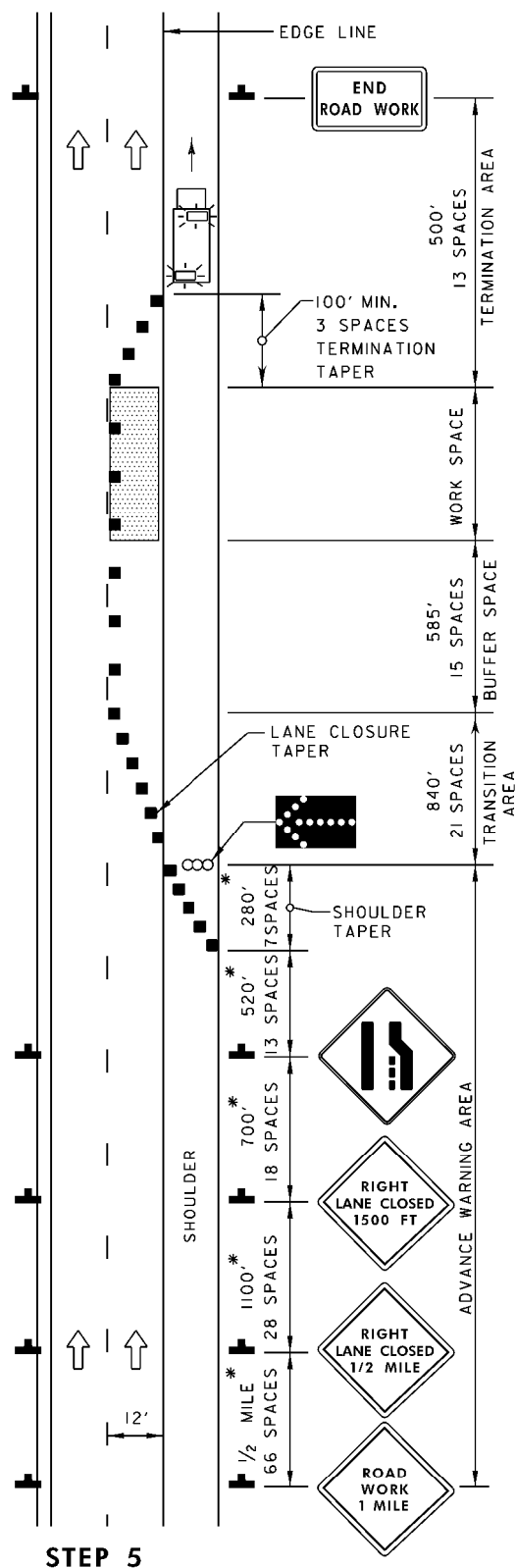
1. PLACE CHANNELIZING DEVICES AT CORRECT SPACING TO FORM TERMINATION TAPER MOVING WITH THE FLOW OF TRAFFIC
2. INSTALL "END ROAD WORK" SIGN APPROXIMATELY 500' FROM LAST DEVICE IN LANE CLOSURE MOVING WITH THE FLOW OF TRAFFIC

STEP 6 - TEMPORARY TRAFFIC CONTROL ACTIVITIES

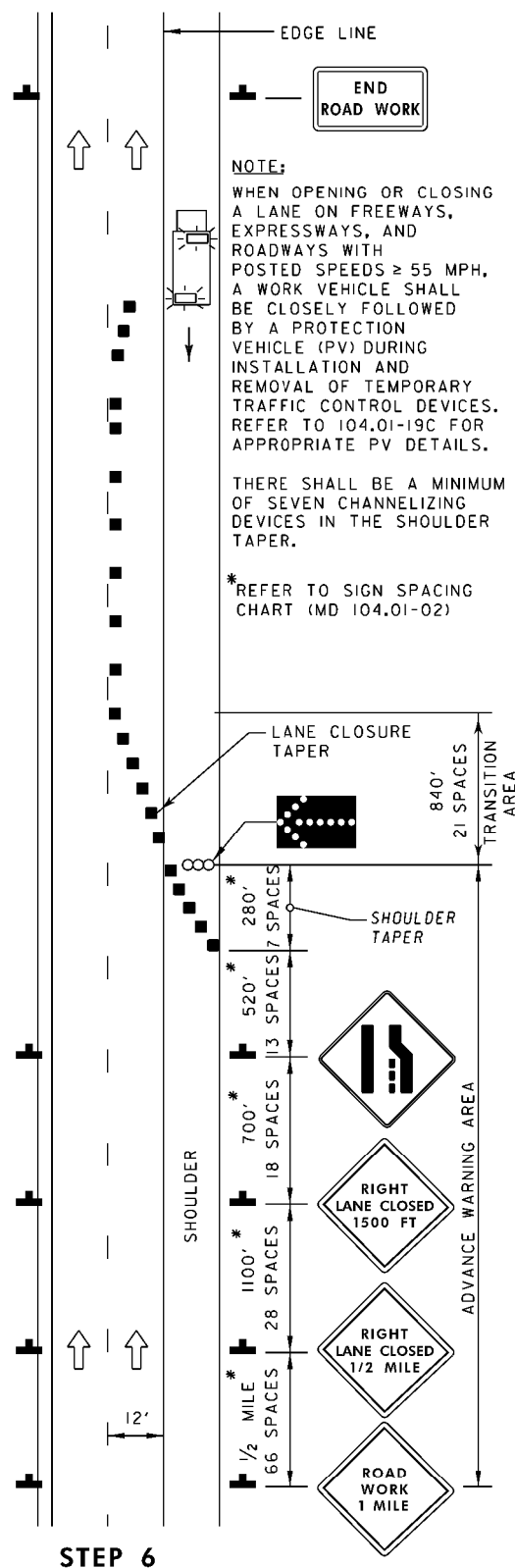
1. CLEANUP WORK SPACE REMOVING ALL DEBRIS, VEHICLES, ETC.
2. REMOVE CHANNELIZING DEVICES FROM END OF CLOSURE BACK TO WIDEST PART OF LANE CLOSURE TAPER AGAINST THE FLOW OF TRAFFIC

KEY:

- CHANNELIZING DEVICES
- SIGN SUPPORT
FACE OF SIGN
- DIRECTION OF TRAFFIC
- ARROW PANEL
- WORK VEHICLE
- APPROVED VEHICLE
SAFETY LIGHT
- WORK SITE



STEP 5



STEP 6

NOT TO SCALE

SPECIFICATION	CATEGORY CODE ITEMS										
APPROVED	<i>Cedric W. S.</i> DIRECTOR - OFFICE OF TRAFFIC AND SAFETY										
SHA State Highway Administration	<table> <tr> <th>APPROVAL • SHA REVISIONS</th><th>APPROVAL • FEDERAL HIGHWAY ADMINISTRATION</th></tr> <tr> <td>APPROVAL 8-20-03</td><td>APPROVAL 9-23-03</td></tr> <tr> <td>REVISED 8-11-10</td><td>REVISED 7-29-10</td></tr> <tr> <td>REVISED 8-20-14</td><td>REVISED 8-11-14</td></tr> <tr> <td>REVISED 9-15-15</td><td>REVISED 8-13-15</td></tr> </table>	APPROVAL • SHA REVISIONS	APPROVAL • FEDERAL HIGHWAY ADMINISTRATION	APPROVAL 8-20-03	APPROVAL 9-23-03	REVISED 8-11-10	REVISED 7-29-10	REVISED 8-20-14	REVISED 8-11-14	REVISED 9-15-15	REVISED 8-13-15
APPROVAL • SHA REVISIONS	APPROVAL • FEDERAL HIGHWAY ADMINISTRATION										
APPROVAL 8-20-03	APPROVAL 9-23-03										
REVISED 8-11-10	REVISED 7-29-10										
REVISED 8-20-14	REVISED 8-11-14										
REVISED 9-15-15	REVISED 8-13-15										

Maryland Department of Transportation STATE HIGHWAY ADMINISTRATION

STANDARDS FOR HIGHWAYS AND INCIDENTAL STRUCTURES

INSTALLING LANE CLOSURE - STEP 5
REMOVING LANE CLOSURE - STEP 6

STANDARD NO.

MD 104.06-03