




## TEMPORARY TRAFFIC CONTROL TYPICAL APPLICATION

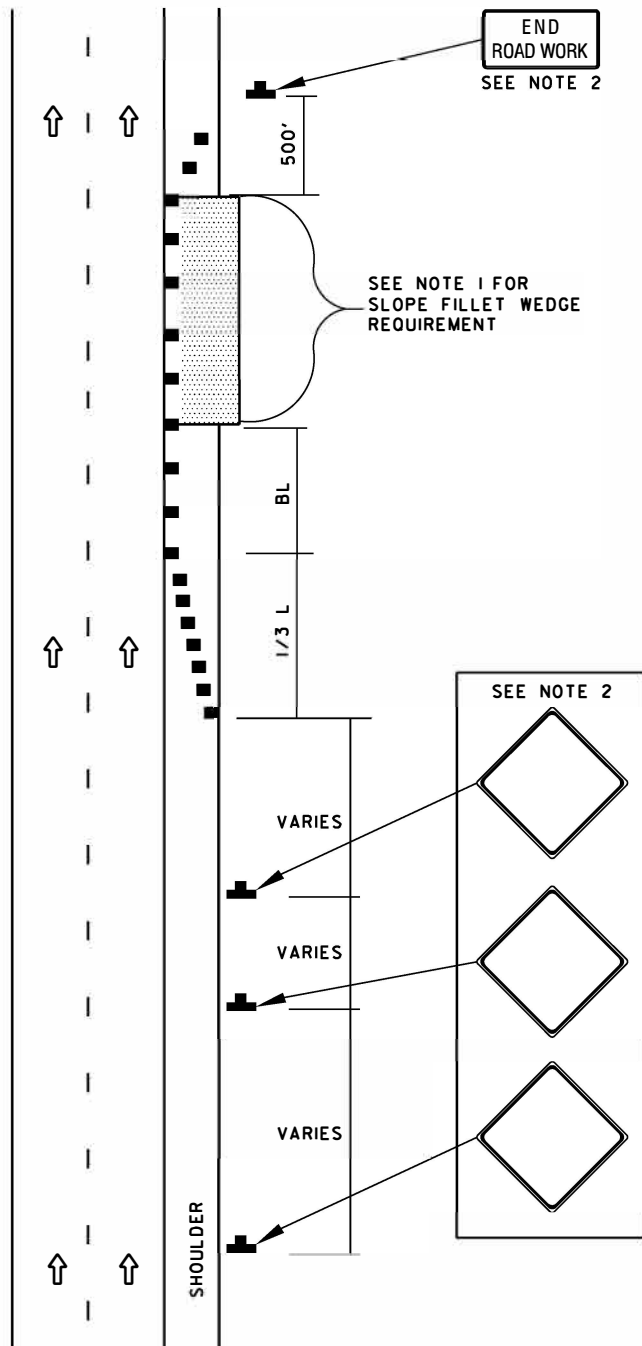
**IMPORTANT:**  
THIS DRAWING SHALL BE USED IN COMBINATION WITH THE GENERAL NOTES MD 104.00-01 - MD 104.00-18 AND STANDARD DETAILS MD 104.01-01 - MD 104.01-81

**NOTES:**

1. DURING NON-WORKING HOURS, A 4:1 OR FLATTER SLOPE FILLET WEDGE IS REQUIRED, UNLESS A TEMPORARY TRAFFIC BARRIER OR W-BEAM IS INSTALLED. REFER TO MD 104.01-28.
2. REFER TO THE APPLICABLE SHOULDER WORK STANDARDS BASED ON THE ROADWAY TYPE AND WORK DURATION TO DETERMINE ADVANCE WARNING SIGN PLACEMENT.
3. SHOULDER CLOSED SIGNS ARE REQUIRED IN PLACE OF SHOULDER WORK SIGNS WHEN THE SHOULDER IS CLOSED BY POSITIVE PROTECTION (TEMPORARY CONCRETE BARRIER OR SIMILAR DEVICE). REFER TO MD 104.06-18. SHOULDER DROP OFF SIGN IS NOT REQUIRED WHEN THE SHOULDER IS CLOSED BY POSITIVE PROTECTION.
4. THERE SHALL BE A MINIMUM OF SEVEN CHANNELIZING DEVICES IN THE SHOULDER TAPER.

**KEY**

- ■ CHANNELIZING DEVICES
-  SIGN SUPPORT  
FACE OF SIGN
- ↑ DIRECTION OF TRAFFIC
-  WORK SITE
-  ADVANCE WARNING SIGN REPRESENTED



SPECIFICATION <b>104,201,501</b>	CATEGORY CODE ITEMS
APPROVED	<i>Cedric Wald</i> DIRECTOR - OFFICE OF TRAFFIC AND SAFETY
APPROVAL REVISIONS	APPROVAL FEDERAL HIGHWAY ADMINISTRATION
APPROVAL 8-20-03	APPROVAL 9-23-03
REVISED 8-11-10	REVISED 7-29-10
REVISED 04-07-26	REVISED 04-02-26
REVISED	REVISED

**MOT** MARYLAND DEPARTMENT OF TRANSPORTATION  
STATE HIGHWAY ADMINISTRATION

**STANDARDS FOR HIGHWAYS AND INCIDENTAL STRUCTURES  
PAVEMENT EDGE DROP-OFF GREATER THAN 2.5  
INCHES BUT EQUAL TO OR LESS THAN 5 INCHES  
(BETWEEN TRAFFIC LANES AND SHOULDER)**

**STANDARD NO.**

**MD 104.06-17**