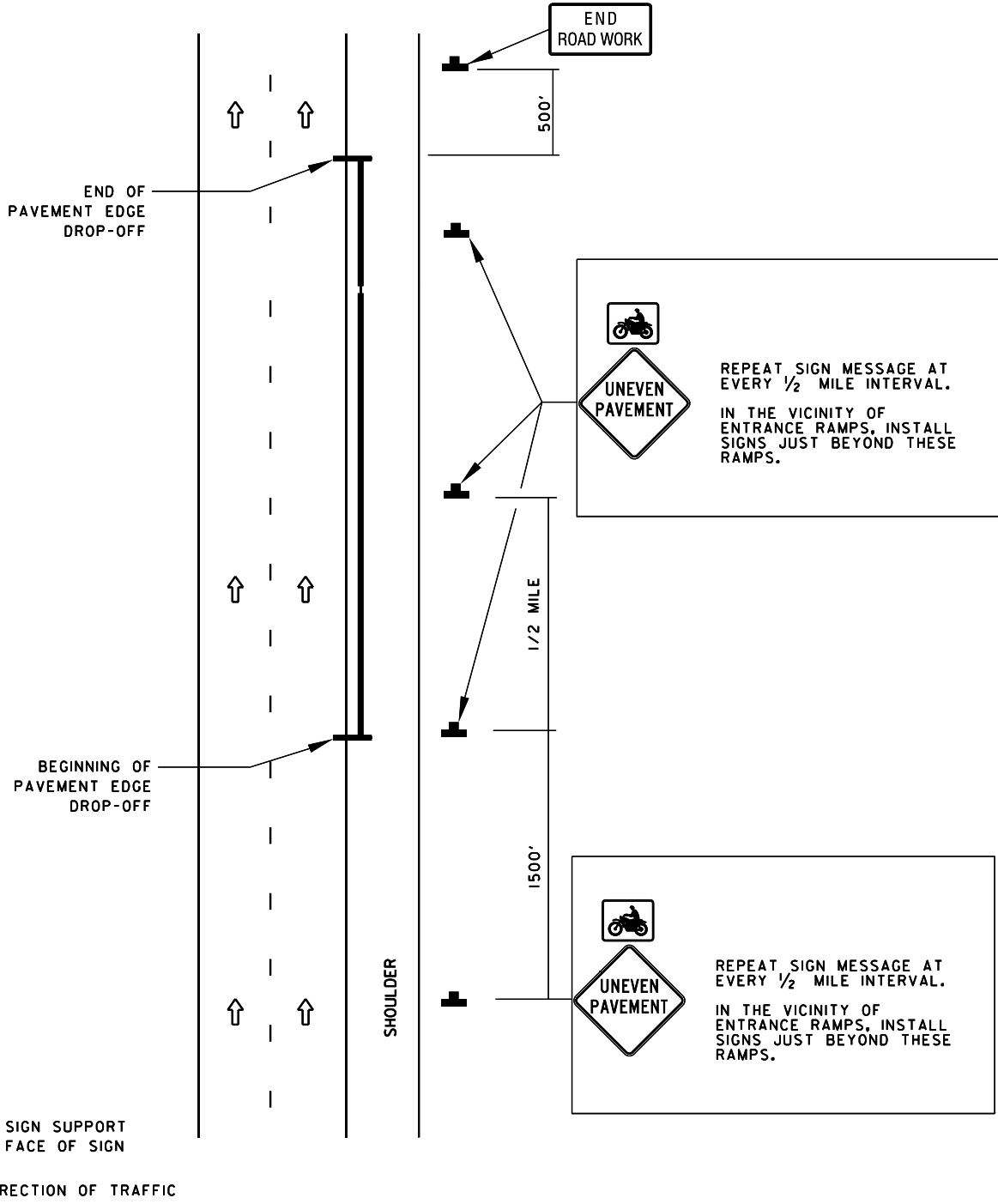


TEMPORARY TRAFFIC CONTROL TYPICAL APPLICATION

IMPORTANT:
 THIS DRAWING SHALL BE USED IN
 COMBINATION WITH THE GENERAL
 NOTES MD 104.00-01 - MD 104.00-18 AND
 STANDARDS MD 104.01-01 - MD 104.01-81



SPECIFICATION 104,504,508,509	CATEGORY CODE ITEMS
APPROVED	<i>Cedric Wald</i> DIRECTOR - OFFICE OF TRAFFIC AND SAFETY
APPROVAL REVISIONS	APPROVAL FEDERAL HIGHWAY ADMINISTRATION
APPROVAL 8-20-03	APPROVAL 9-23-03
REVISED 8-11-10	REVISED 7-29-10
REVISED 1-3-19	REVISED 9-18-17
REVISED 04-07-26	REVISED 04-02-26

MOT MARYLAND DEPARTMENT OF TRANSPORTATION
 STATE HIGHWAY ADMINISTRATION

STANDARDS FOR HIGHWAYS AND INCIDENTAL STRUCTURES

**PAVEMENT EDGE DROP-OFF 2.5 INCHES OR LESS
 (BETWEEN TRAFFIC LANES AND SHOULDER)**

STANDARD NO.

MD 104.06-16