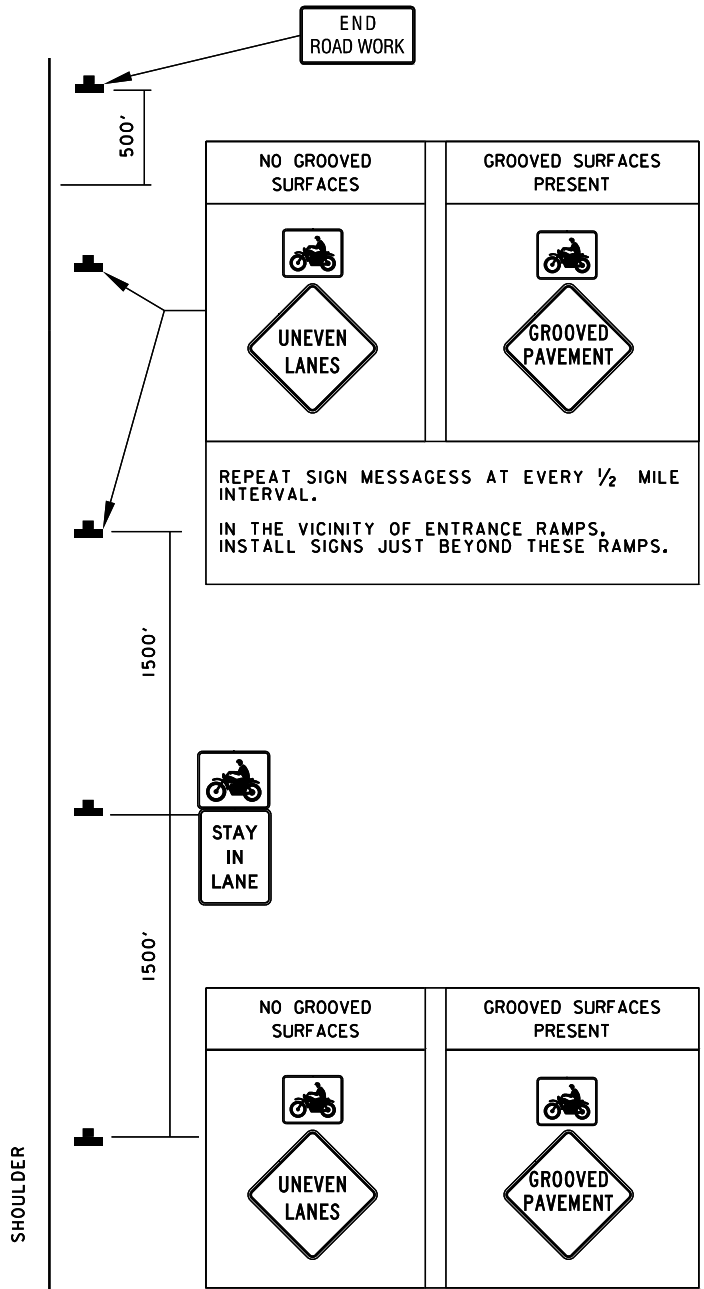
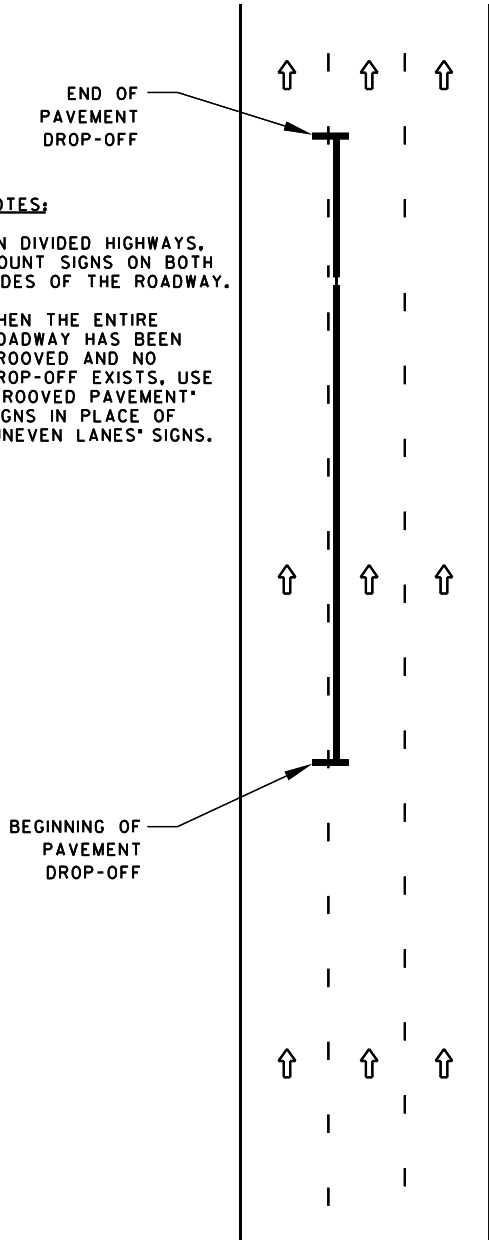


TEMPORARY TRAFFIC CONTROL TYPICAL APPLICATION

IMPORTANT:
THIS DRAWING SHALL BE USED IN COMBINATION WITH THE GENERAL NOTES MD 104.00-01 - MD 104.00-18 AND STANDARDS MD 104.01-01 - MD 104.01-81

NOTES:

1. ON DIVIDED HIGHWAYS, MOUNT SIGNS ON BOTH SIDES OF THE ROADWAY.
2. WHEN THE ENTIRE ROADWAY HAS BEEN GROOVED AND NO DROP-OFF EXISTS, USE "GROOVED PAVEMENT" SIGNS IN PLACE OF "UNEVEN LANES" SIGNS.



NO GROOVED SURFACES	GROOVED SURFACES PRESENT
 UNEVEN LANES	 GROOVED PAVEMENT
REPEAT SIGN MESSAGES AT EVERY 1/2 MILE INTERVAL. IN THE VICINITY OF ENTRANCE RAMP, INSTALL SIGNS JUST BEYOND THESE RAMP.	

NO GROOVED SURFACES	GROOVED SURFACES PRESENT
 UNEVEN LANES	 GROOVED PAVEMENT

KEY

- SIGN SUPPORT
- FACE OF SIGN
- DIRECTION OF TRAFFIC

SPECIFICATION 104,504,508,509	CATEGORY CODE ITEMS
APPROVED	<i>Cedric Wald</i> DIRECTOR - OFFICE OF TRAFFIC AND SAFETY
APPROVAL REVISIONS	APPROVAL FEDERAL HIGHWAY ADMINISTRATION
APPROVAL 8-20-03	APPROVAL 9-23-03
REVISED 8-11-10	REVISED 7-29-10
REVISED 1-3-19	REVISED 9-18-17
REVISED 04-07-26	REVISED 04-02-26

MARYLAND DEPARTMENT OF TRANSPORTATION
 STATE HIGHWAY ADMINISTRATION
 STANDARDS FOR HIGHWAYS AND INCIDENTAL STRUCTURES
**PAVEMENT DROP-OFF 2.5 INCHES OR LESS
 (BETWEEN TRAFFIC LANES)**
STANDARD NO. MD 104.06-15