

TEMPORARY TRAFFIC CONTROL TYPICAL APPLICATION

IMPORTANT:

THIS DRAWING SHALL BE USED IN COMBINATION WITH THE GENERAL NOTES MD 104.00-01 - MD 104.00-18 AND STANDARD DETAILS MD 104.01-01 - MD 104.01-81.

NOTES:

1. FLAGGER SHALL NEVER BE STATIONED MORE THAN 1000' AWAY FROM THE ADVANCE FLAGGER SIGN.
2. AT NIGHT FLAGGER STATION SHALL BE ILLUMINATED.
3. WHEN SIGHT DISTANCE IS RESTRICTED DUE TO HORIZONTAL OR CREST VERTICAL CURVE, THE BUFFER SPACE SHOULD BE EXTENDED SO THAT THE TWO-WAY TRAFFIC TAPER IS PLACED BEFORE THE HORIZONTAL OR CREST VERTICAL CURVE.
4. REFER TO MD 104.00-18 AND MD 104.06-28 FOR THE USE OF TPRS WITH FLAGGING.

(OPTIONAL FOR 15 MIN-12 HRS. OR DAYTIME APPLICATIONS)

END ROAD WORK

500'

SIGN MESSAGES AND PLACEMENT SAME ON ALL FOUR APPROACHES

50' MIN-100' MAX

BL

NOTES (CONT.):

5. REFER TO MD 104.02-10A FOR THE USE OF AFAD.
6. REFER TO MD 104.01-81 TO DETERMINE THE BUFFER LENGTH.
7. REFER TO SECTION 9.0 OF THE GENERAL NOTES FOR ADDITIONAL GUIDANCE ON FLAGGING AT SIGNALIZED INTERSECTIONS.

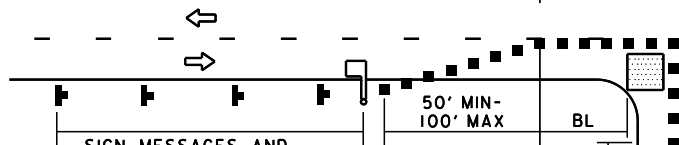
END ROAD WORK

(OPTIONAL FOR 15 MIN-12 HRS. OR DAYTIME APPLICATIONS)

500'

SIGN MESSAGES AND PLACEMENT SAME ON ALL FOUR APPROACHES

BL



SIGN MESSAGES AND PLACEMENT SAME ON ALL FOUR APPROACHES

50' MIN-100' MAX

BL

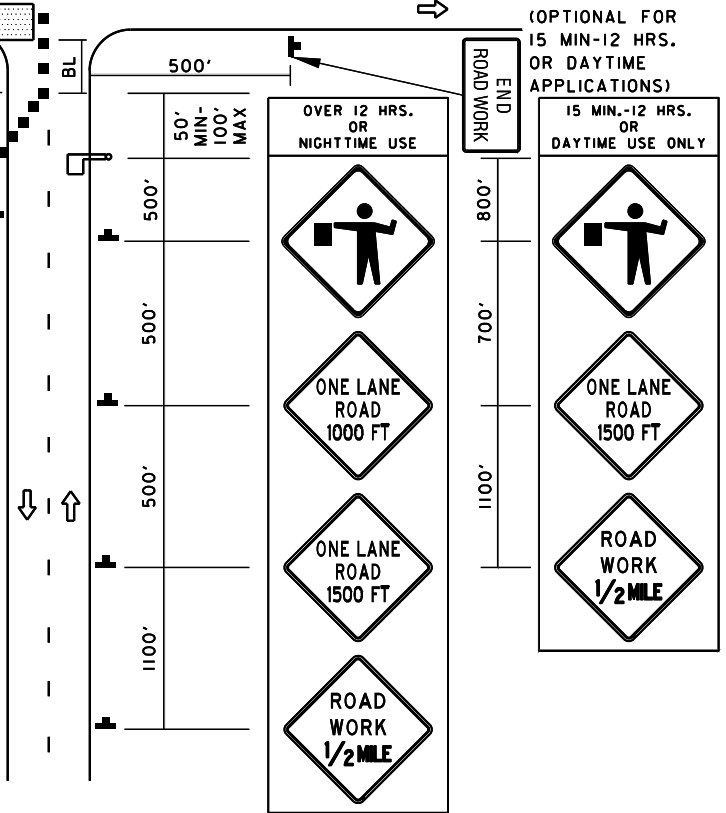
500'

END ROAD WORK

(OPTIONAL FOR 15 MIN-12 HRS. OR DAYTIME APPLICATIONS)

KEY:

- CHANNELIZING DEVICES
- ▬ SIGN SUPPORT FACE OF SIGN
- ↑ DIRECTION OF TRAFFIC
- ▨ WORK SITE
- FLAGGER



(OPTIONAL FOR 15 MIN-12 HRS. OR DAYTIME APPLICATIONS)

15 MIN.-12 HRS. OR DAYTIME USE ONLY

OVER 12 HRS. OR NIGHTTIME USE

END ROAD WORK

500'

500'

500'

1100'



SPECIFICATION 104	CATEGORY CODE ITEMS
APPROVED	<i>Cedric Wald</i> DIRECTOR - OFFICE OF TRAFFIC AND SAFETY
APPROVAL SHA REVISIONS	APPROVAL FEDERAL HIGHWAY ADMINISTRATION
APPROVAL 8-20-03	APPROVAL 9-23-03
REVISED 8-11-10	REVISED 7-29-10
REVISED 04-07-26	REVISED 04-02-26
REVISED	REVISED

MOT MARYLAND DEPARTMENT OF TRANSPORTATION
STATE HIGHWAY ADMINISTRATION

STANDARDS FOR HIGHWAYS AND INCIDENTAL STRUCTURES
INTERSECTION FLAGGING OPERATION
2-LANE, 2-WAY EQL/LESS THAN 40 MPH

STANDARD NO.

MD 104.02-14