

TEMPORARY TRAFFIC CONTROL TYPICAL APPLICATION







IMPORTANT:

THIS DRAWING SHALL BE USED IN COMBINATION WITH THE GENERAL NOTES MD 104.00-01 - MD 104.00-18 AND STANDARD DETAILS MD 104.01-01 - MD 104.01-81.

NOTES:

1. FLAGGER SHALL NEVER BE STATIONED MORE THAN 1000' AWAY FROM THE ADVANCE FLAGGER SIGN.
2. AT NIGHT FLAGGER STATION SHALL BE ILLUMINATED.
3. WHEN SIGHT DISTANCE IS RESTRICTED DUE TO HORIZONTAL OR CREST VERTICAL CURVE, THE BUFFER SPACE SHOULD BE EXTENDED SO THAT THE TWO-WAY TRAFFIC TAPER IS PLACED BEFORE THE HORIZONTAL OR CREST VERTICAL CURVE.
4. REFER TO MD 104.00-18 AND MD 104.06-28 FOR THE USE OF TPRS WITH FLAGGING.
5. REFER TO MD 104.02-10A FOR THE USE OF AFAD.
6. REFER TO MD 104.01-81 TO DETERMINE THE BUFFER LENGTH.

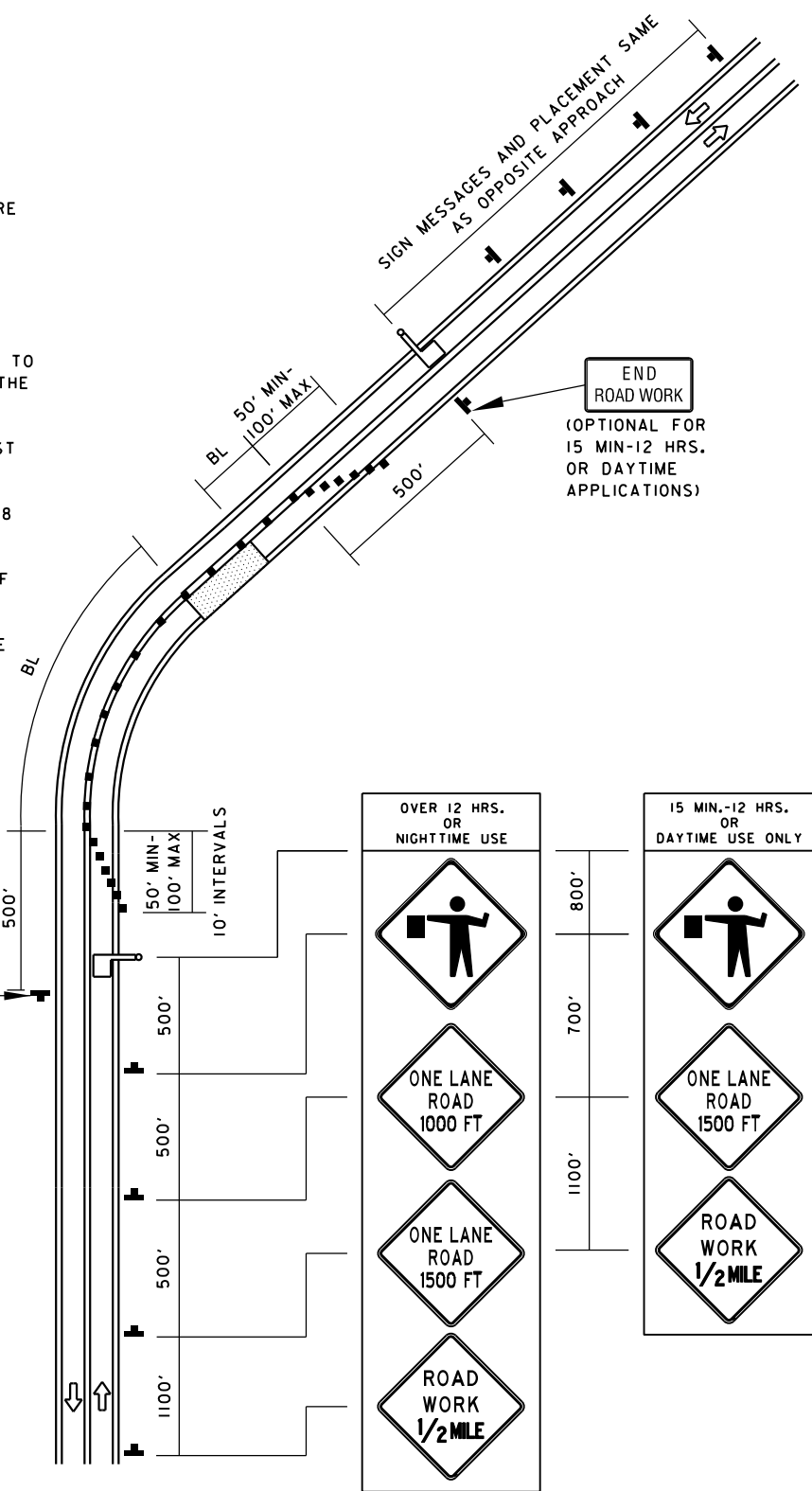
KEY:

-  CHANNELIZING DEVICES
-  SIGN SUPPORT
-  FACE OF SIGN
-  DIRECTION OF TRAFFIC
-  WORK SITE
-  FLAGGER

END ROAD WORK

 (OPTIONAL FOR 15 MIN-12 HRS. OR DAYTIME APPLICATIONS)

END ROAD WORK

 (OPTIONAL FOR 15 MIN-12 HRS. OR DAYTIME APPLICATIONS)


SPECIFICATION 104	CATEGORY CODE ITEMS		
APPROVED	<i>Cedric Ward</i> DIRECTOR - OFFICE OF TRAFFIC AND SAFETY		
APPROVAL SHA REVISIONS	APPROVAL FEDERAL HIGHWAY ADMINISTRATION		
APPROVAL	8-20-03	APPROVAL	9-23-03
REVISED	8-11-10	REVISED	7-29-10
REVISED	1-30-25	REVISED	1-24-25
REVISED		REVISED	

MDOT MARYLAND DEPARTMENT OF TRANSPORTATION
STATE HIGHWAY ADMINISTRATION

STANDARDS FOR HIGHWAYS AND INCIDENTAL STRUCTURES

FLAGGING OPERATION/2-LANE, 2-WAY
EQ/LESS THAN 40 MPH

STANDARD NO. MD 104.02-10