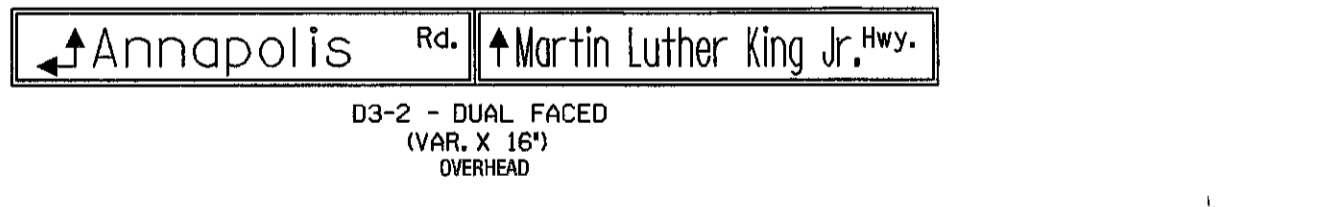
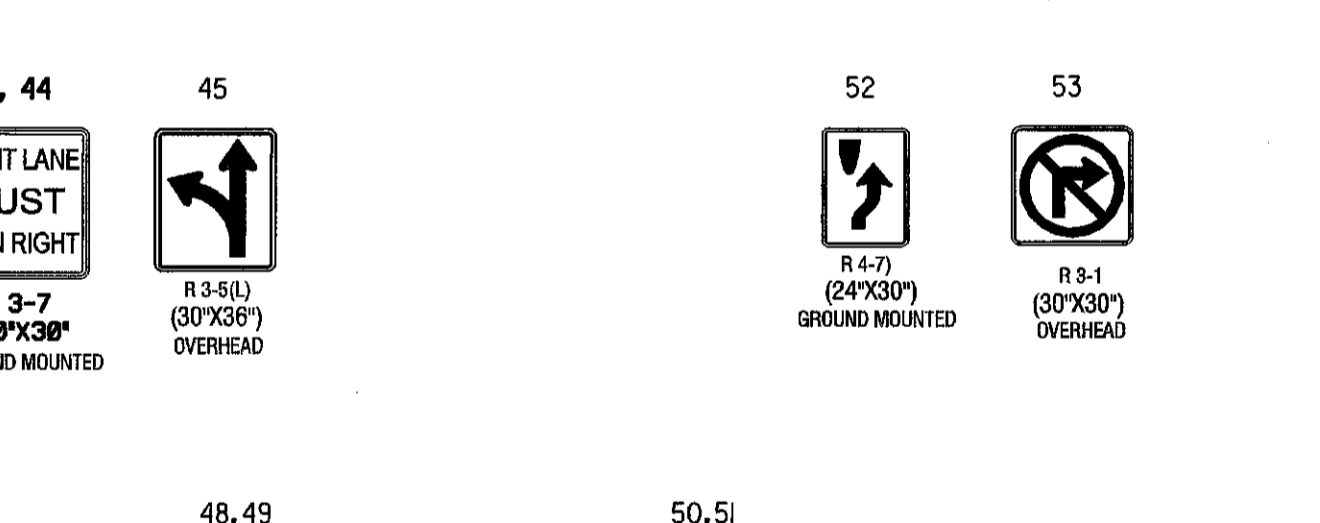
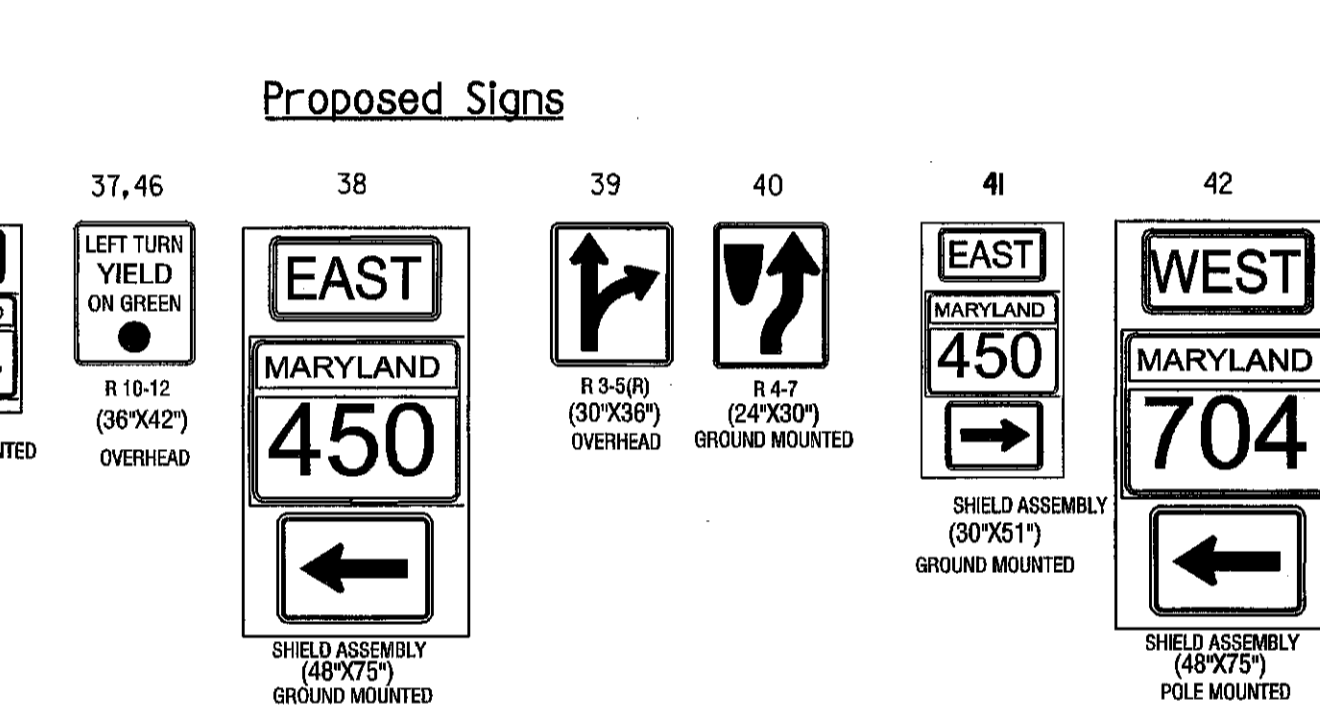
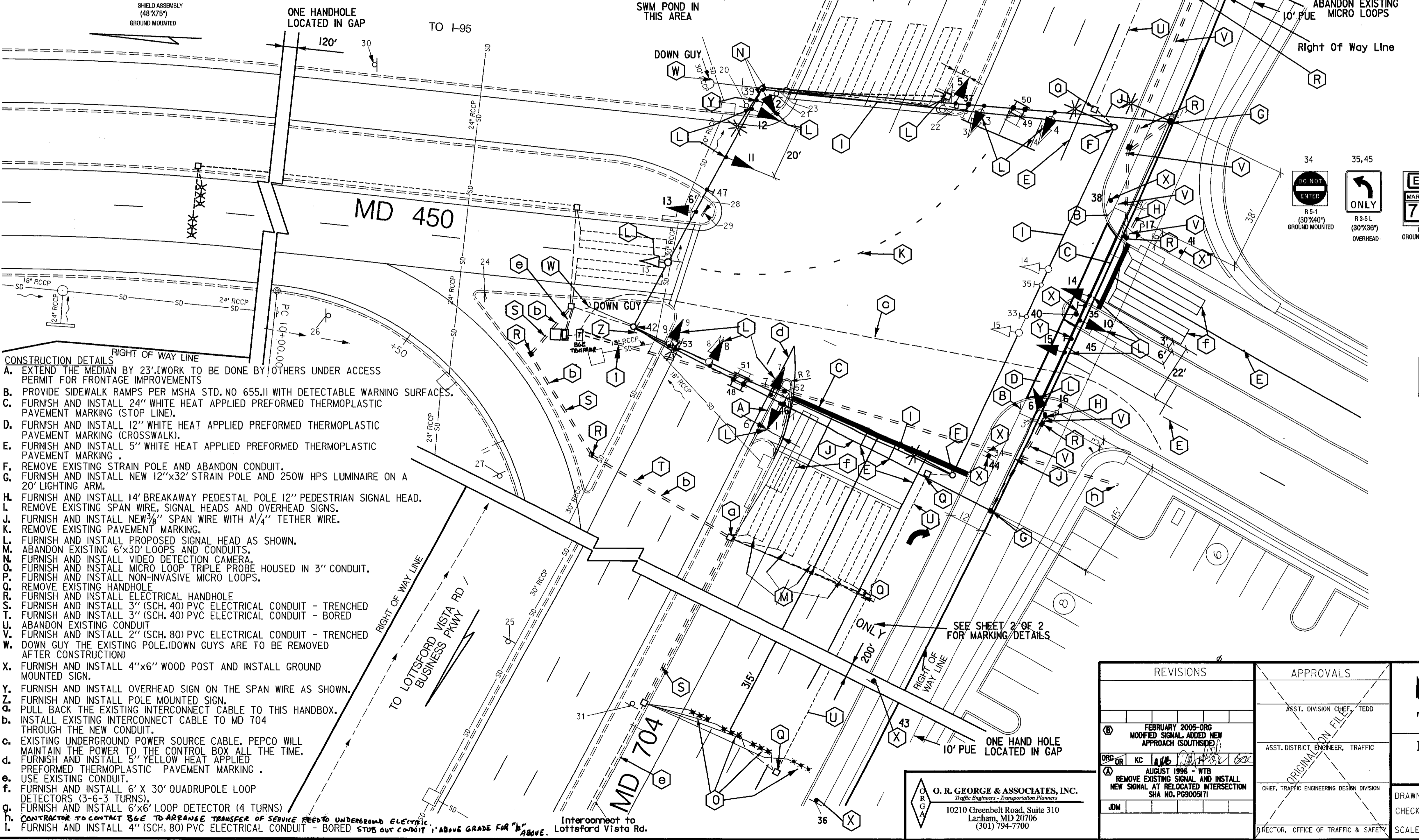
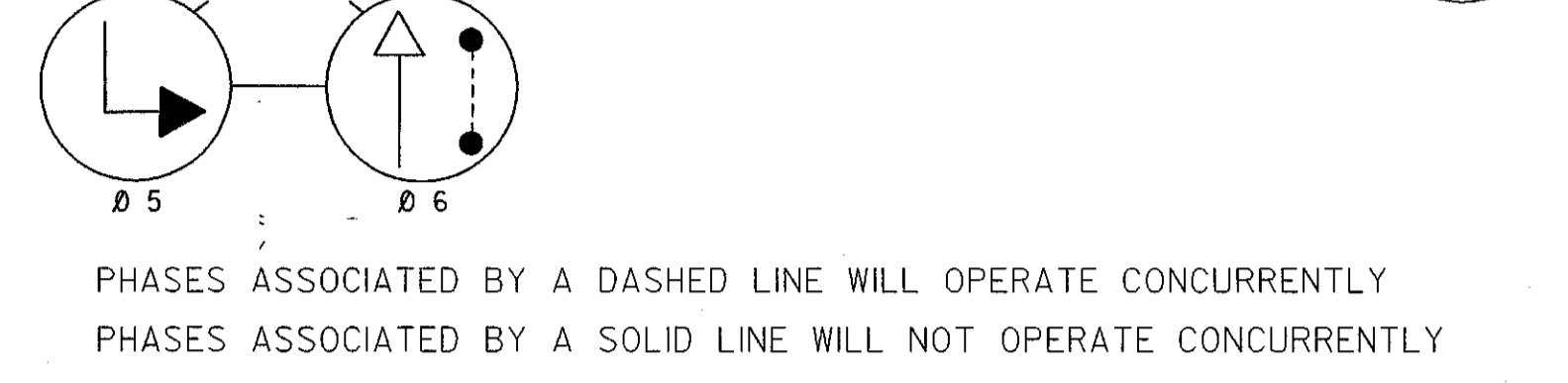
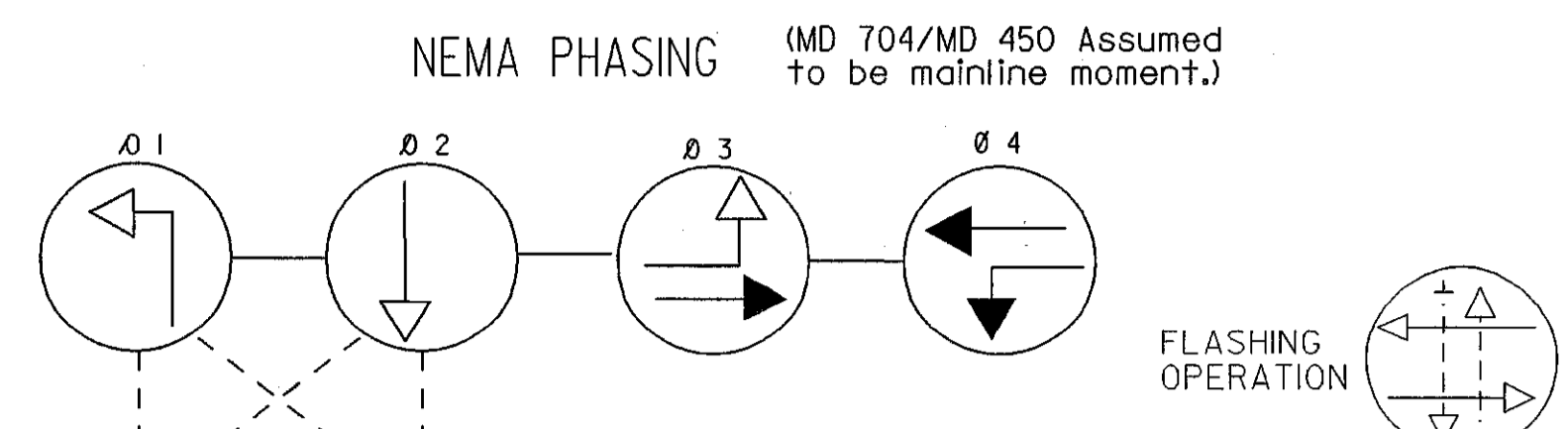
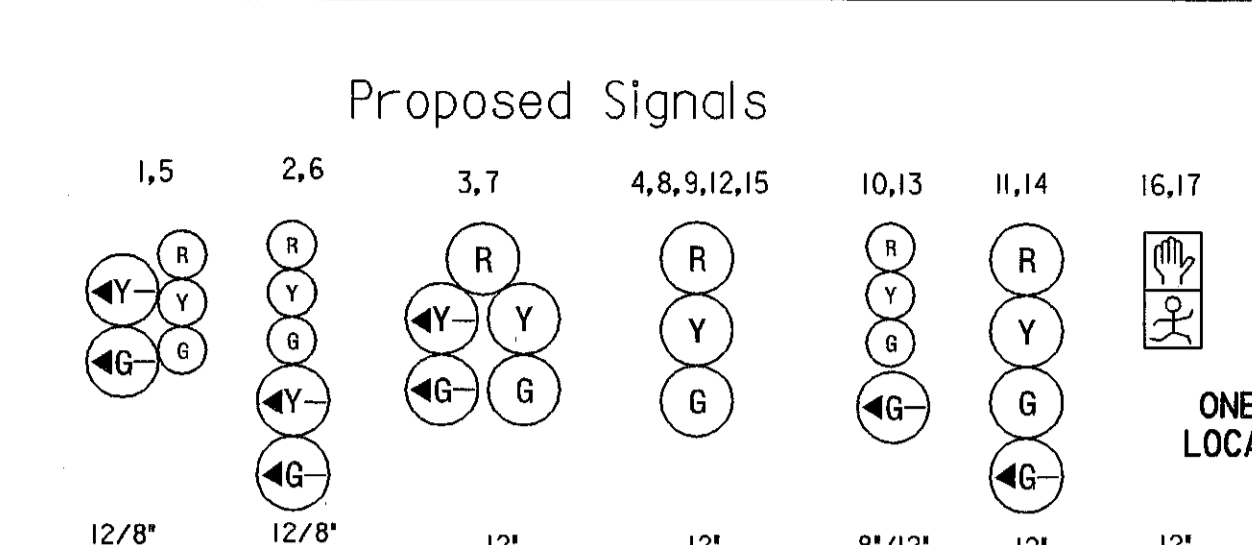
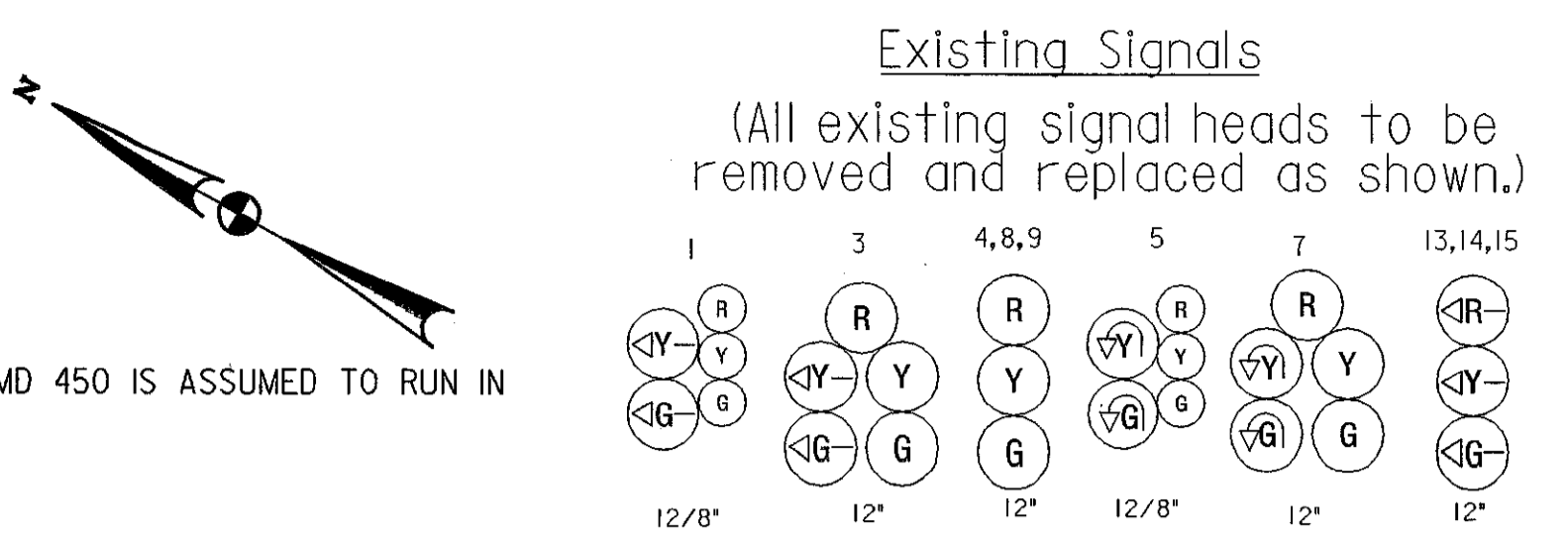


F.H.W.A. REGION NO.	STATE	FED. AID PROJ. NO.	SHEET NO.	TOTAL SHEETS
3	MD	SEE TITLE SHEET	1	2



- CONSTRUCTION DETAILS**
- A. EXTEND THE MEDIAN BY 23' WORK TO BE DONE BY OTHERS UNDER ACCESS PERMIT FOR FRONTAGE IMPROVEMENTS
 - B. PROVIDE SIDEWALK RAMPS PER MSHA STD. NO 655.11 WITH DETECTABLE WARNING SURFACES.
 - C. FURNISH AND INSTALL 24" WHITE HEAT APPLIED PREFORMED THERMOPLASTIC PAVEMENT MARKING (STOP LINE).
 - D. FURNISH AND INSTALL 12" WHITE HEAT APPLIED PREFORMED THERMOPLASTIC PAVEMENT MARKING (CROSSWALK).
 - E. FURNISH AND INSTALL 5" WHITE HEAT APPLIED PREFORMED THERMOPLASTIC PAVEMENT MARKING.
 - F. REMOVE EXISTING STRAIN POLE AND ABANDON CONDUIT.
 - G. FURNISH AND INSTALL NEW 12"x32" STRAIN POLE AND 250W HPS LUMINAIRE ON A 20' LIGHTING ARM.
 - H. FURNISH AND INSTALL 14' BREAKAWAY PEDESTAL POLE 12" PEDESTRIAN SIGNAL HEAD.
 - I. REMOVE EXISTING SPAN WIRE, SIGNAL HEADS AND OVERHEAD SIGNS.
 - J. FURNISH AND INSTALL NEW 3/8" SPAN WIRE WITH 1/4" TETHER WIRE.
 - K. REMOVE EXISTING PAVEMENT MARKING.
 - L. FURNISH AND INSTALL PROPOSED SIGNAL HEAD AS SHOWN.
 - M. ABANDON EXISTING 6"x30" LOOPS AND CONDUITS.
 - N. FURNISH AND INSTALL VIDEO DETECTION CAMERA.
 - O. FURNISH AND INSTALL MICRO LOOP TRIPLE PROBE HOUSED IN 3" CONDUIT.
 - P. FURNISH AND INSTALL NON-INVASIVE MICRO LOOPS.
 - Q. REMOVE EXISTING HANDHOLE.
 - R. FURNISH AND INSTALL ELECTRICAL HANDHOLE.
 - S. FURNISH AND INSTALL 3" (SCH. 40) PVC ELECTRICAL CONDUIT - TRENCHED
 - T. FURNISH AND INSTALL 3" (SCH. 40) PVC ELECTRICAL CONDUIT - BORED
 - U. ABANDON EXISTING CONDUIT
 - V. FURNISH AND INSTALL 2" (SCH. 80) PVC ELECTRICAL CONDUIT - TRENCHED
 - W. DOWN GUY THE EXISTING POLE. (DOWN GUYS ARE TO BE REMOVED AFTER CONSTRUCTION)
 - X. FURNISH AND INSTALL 4"x6" WOOD POST AND INSTALL GROUND MOUNTED SIGN.
 - Y. FURNISH AND INSTALL OVERHEAD SIGN ON THE SPAN WIRE AS SHOWN.
 - Z. FURNISH AND INSTALL POLE MOUNTED SIGN.
 - a. PULL BACK THE EXISTING INTERCONNECT CABLE TO THIS HANDBOX.
 - b. INSTALL EXISTING INTERCONNECT CABLE TO MD 704 THROUGH THE NEW CONDUIT.
 - c. EXISTING UNDERGROUND POWER SOURCE CABLE. PEPCO WILL MAINTAIN THE POWER TO THE CONTROL BOX ALL THE TIME.
 - d. FURNISH AND INSTALL 5" YELLOW HEAT APPLIED PREFORMED THERMOPLASTIC PAVEMENT MARKING.
 - e. USE EXISTING CONDUIT.
 - f. FURNISH AND INSTALL 6' X 30' QUADRUPOLE LOOP DETECTORS (3-6-3 TURNS).
 - g. FURNISH AND INSTALL 6' X 6' LOOP DETECTOR (4 TURNS)
 - h. CONTRACTOR TO CONTACT 665 TO ARRANGE TRANSFER OF SERVICE FEES TO UNDERGROUND ELECTRIC.
 - i. FURNISH AND INSTALL 4" (SCH. 80) PVC ELECTRICAL CONDUIT - BORED STUB OUT CONDUIT 1' ABOVE GRADE FOR "H" ABOVE.

REVISIONS	APPROVALS
(B) FEBRUARY 2005-ORC MODIFIED SIGNAL, ADDED NEW APPROACH (SOUTHSIDE)	ASST. DIVISION CHIEF, TEDD
(A) AUGUST 1996 - WTB REMOVE EXISTING SIGNAL AND INSTALL NEW SIGNAL AT RELOCATED INTERSECTION SHA NO. PG000917	ASST. DISTRICT ENGINEER, TRAFFIC
(J) JDM	CHEF, TRAFFIC ENGINEERING DESIGN DIVISION
	DIRECTOR, OFFICE OF TRAFFIC & SAFETY

MARYLAND DOT - STATE HIGHWAY ADMINISTRATION
Office of Traffic & Safety
TRAFFIC ENGINEERING DESIGN DIVISION

MD 450 (ANNAPOLIS ROAD) AT MD 704 (MARTIN LUTHER KING JR. HWY)

LOG MILE NO. 16045007.35 DATE 2 / 6 / 91

DRAWN BY: D. A. NIES	F.A.P. NO. SEE TITLE SHEET	PLAN SHEET NO.:	SHEET NO.
CHECK BY: D. DODA 7/25/91 E. MILESKY 7/26/91	S.H.A. NO. P-981-451-385	PRINCE GEORGES	75-3167B
SCALE: 1"=20'	COUNTY		1 OF 2

O. R. GEORGE & ASSOCIATES, INC.
Traffic Engineers - Transportation Planners
10210 Greenbelt Road, Suite 310
Lanham, MD 20706
(301) 794-7700

LEGEND OF UNDERGROUND AND OVERHEAD UTILITIES

AERIAL CABLES	A
ELECTRICAL	E
TELEPHONE	T
GAS	G
SEWER	S
WATER	W
CABLE TV	TV