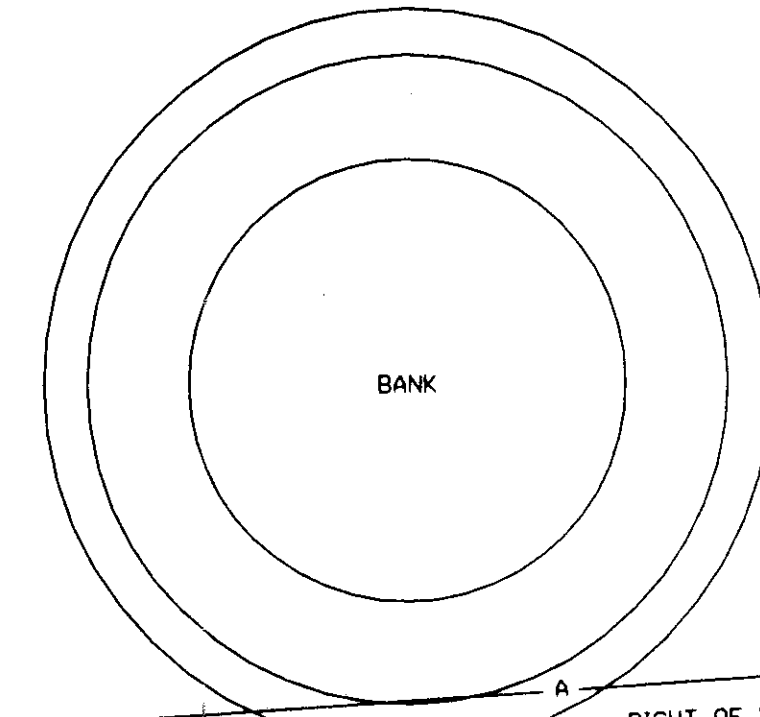
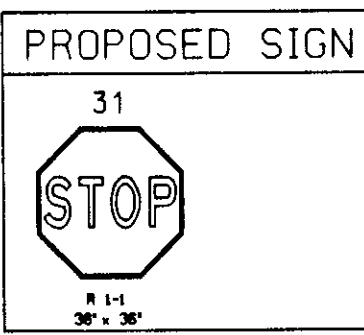
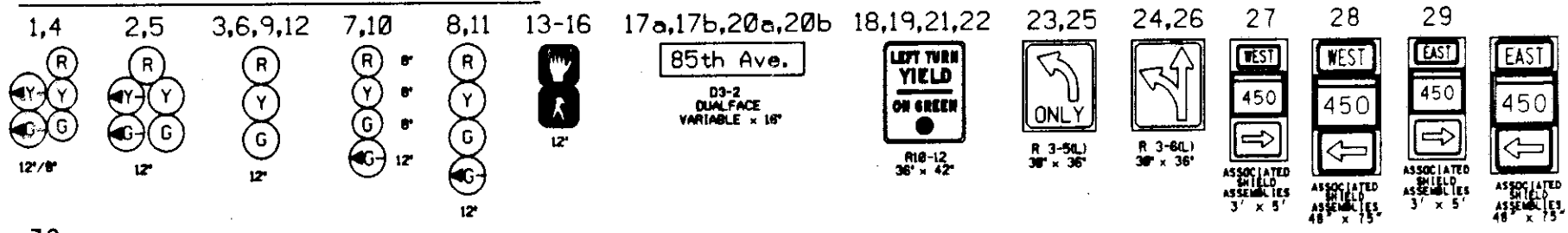


EXISTING SIGNALS & SIGNS

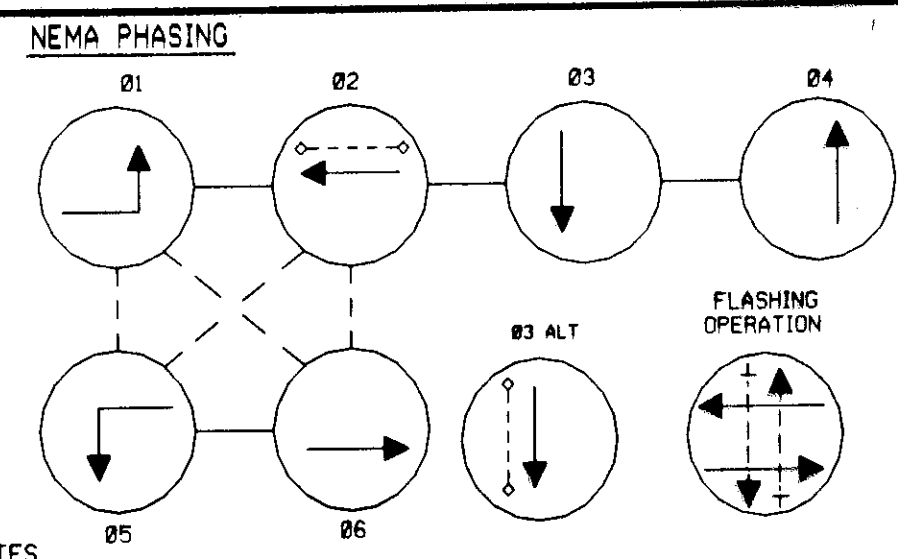


A. EQUIPMENT TO BE SUPPLIED BY THE ADMINISTRATION

ITEM NO.	QUANTITY	DESCRIPTION
	9 S.F.	R1-1 SIGN, 'STOP', 36" x 36", POLE MOUNTED HARDWARE

B. EQUIPMENT TO BE SUPPLIED AND/OR INSTALLED BY THE CONTRACTOR

ITEM NO.	QUANTITY	DESCRIPTION
1001	1 EACH	MAINTENANCE OF TRAFFIC
2001	1 C.Y.	TEST PIT EXCAVATION
5001	340 L.F.	F & I 6" YELLOW PERMANENT PREFORMED PAVEMENT MARKING TAPE
5002	275 L.F.	F & I 6" WHITE PERMANENT PREFORMED PAVEMENT MARKING TAPE
5004	70 L.F.	F & I 24" WHITE PERMANENT PREFORMED PAVEMENT MARKING TAPE
5013	280 L.F.	REMOVE EXISTING PAVEMENT MARKINGS - ANY WIDTH
6009	4 L.F.	F & I MONOLITHIC CONCRETE MEDIAN 4' WIDE TYPE A-1
8011	1 EACH	INSTALL SIGNAL HEAD (ANY TYPE)
8021	255 L.F.	F & I SAW CUT FOR SIGNAL (LOOP DETECTOR)
8023	15 L.F.	F & I 1" LIQUID TIGHT FLEXIBLE NON-METALLIC CONDUIT FOR DETECTOR SLEEVE
8040	910 L.F.	F & I LOOP WIRE ENCASED IN FLEXIBLE TUBING (NO.14 AWG)
8041	510 L.F.	F & I ELECTRICAL CABLE - 2-CONDUCTOR (ALUMINUM SHIELDED)
8051	24 L.F.	F & I WOOD SIGN SUPPORTS 4" x 4"
8053	9 S.F.	INSTALL GROUND MOUNTED SIGN
8054	15 S.F.	INSTALL OVERHEAD SIGN

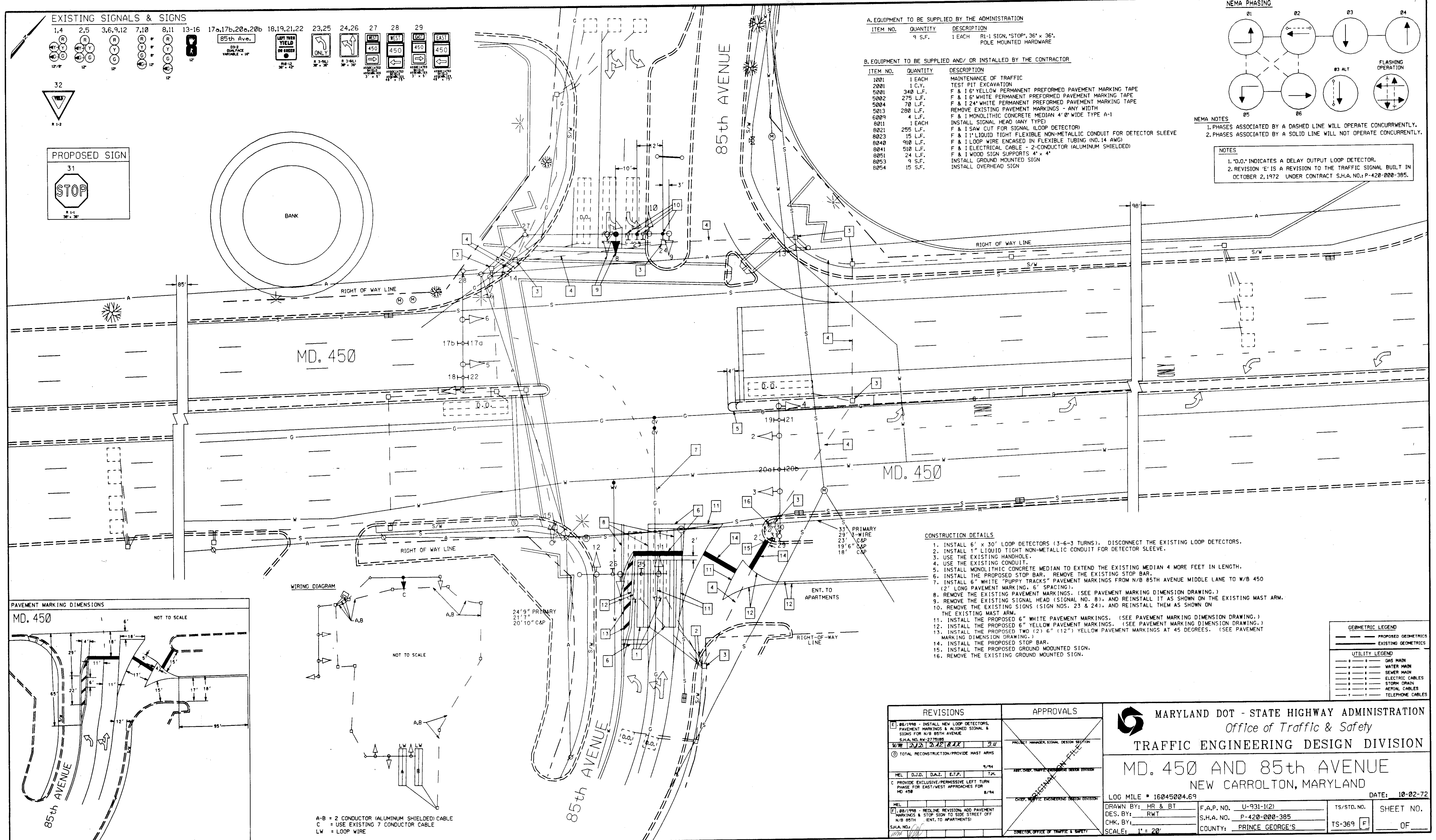


NEMA NOTES

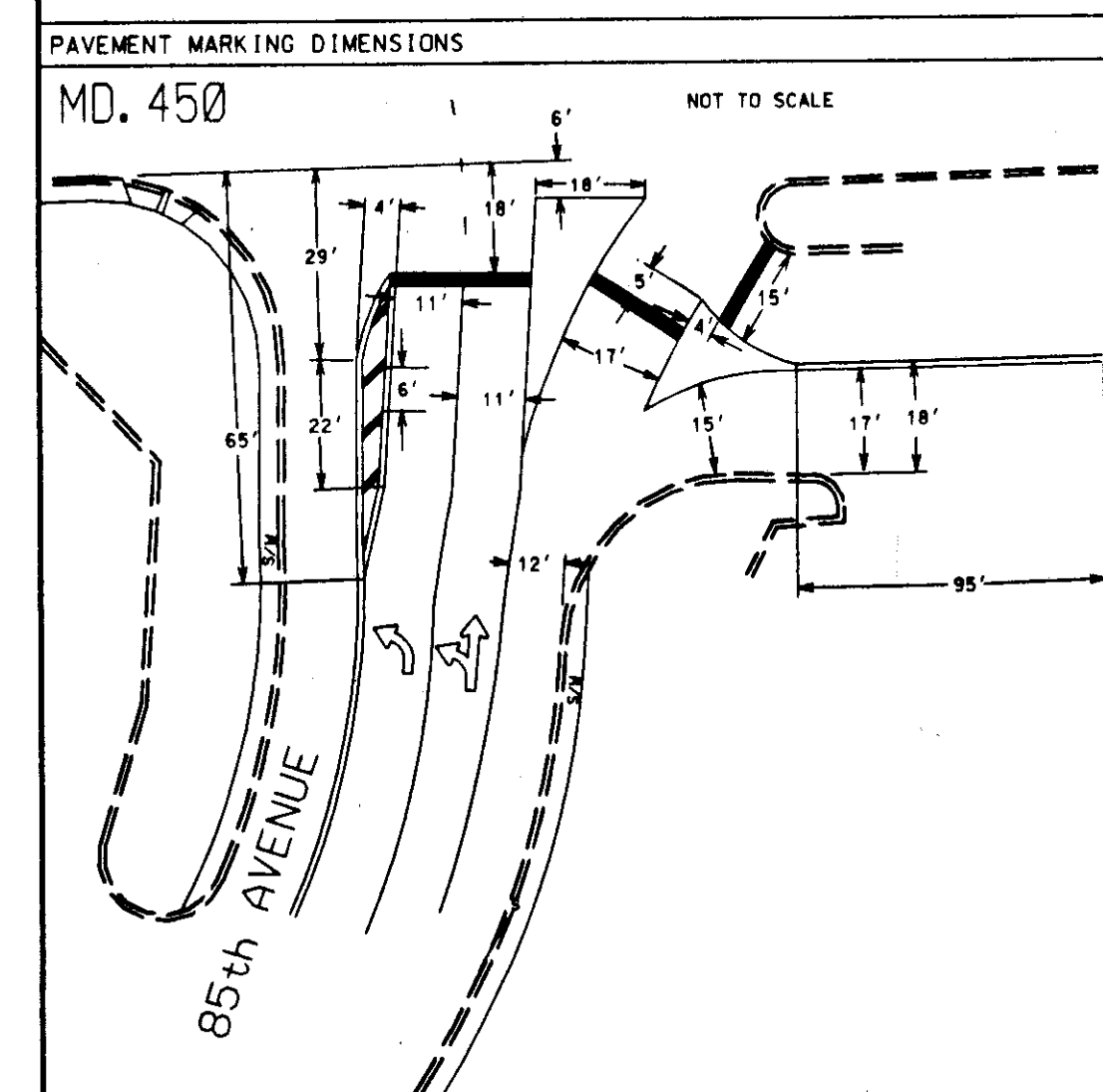
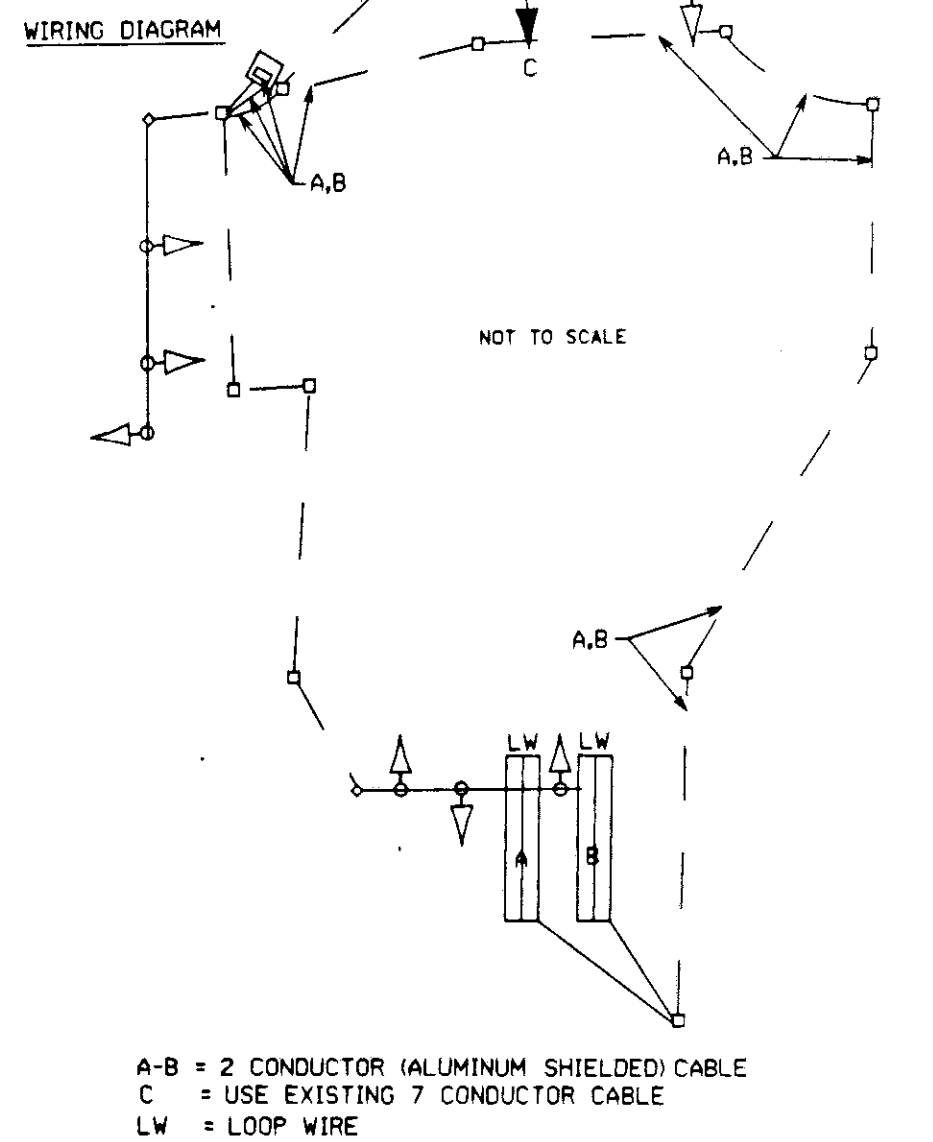
- PHASES ASSOCIATED BY A DASHED LINE WILL OPERATE CONCURRENTLY.
- PHASES ASSOCIATED BY A SOLID LINE WILL NOT OPERATE CONCURRENTLY.

NOTES

- 'D.O.' INDICATES A DELAY OUTPUT LOOP DETECTOR.
- REVISION 'E' IS A REVISION TO THE TRAFFIC SIGNAL BUILT IN OCTOBER 2, 1972 UNDER CONTRACT S.H.A. NO. P-428-000-385.



- CONSTRUCTION DETAILS**
- INSTALL 6' x 30' LOOP DETECTORS (3-6-3 TURNS). DISCONNECT THE EXISTING LOOP DETECTORS.
 - INSTALL 1" LIQUID TIGHT NON-METALLIC CONDUIT FOR DETECTOR SLEEVE.
 - USE THE EXISTING HANDHOLE.
 - USE THE EXISTING CONDUIT.
 - INSTALL MONOLITHIC CONCRETE MEDIAN TO EXTEND THE EXISTING MEDIAN 4 MORE FEET IN LENGTH.
 - INSTALL THE PROPOSED STOP BAR. REMOVE THE EXISTING STOP BAR.
 - INSTALL 6" WHITE "PUPPY TRACKS" PAVEMENT MARKINGS FROM N/B 85TH AVENUE MIDDLE LANE TO W/B 450 (2' LONG PAVEMENT MARKING, 6" SPACING).
 - REMOVE THE EXISTING PAVEMENT MARKINGS. (SEE PAVEMENT MARKING DIMENSION DRAWING.)
 - REMOVE THE EXISTING SIGNAL HEAD (SIGNAL NO. 8), AND REINSTALL IT AS SHOWN ON THE EXISTING MAST ARM.
 - REMOVE THE EXISTING SIGNS (SIGN NOS. 23 & 24), AND REINSTALL THEM AS SHOWN ON THE EXISTING MAST ARM.
 - INSTALL THE PROPOSED 6" WHITE PAVEMENT MARKINGS. (SEE PAVEMENT MARKING DIMENSION DRAWING.)
 - INSTALL THE PROPOSED 6" YELLOW PAVEMENT MARKINGS. (SEE PAVEMENT MARKING DIMENSION DRAWING.)
 - INSTALL THE PROPOSED TWO (2) 6" (12") YELLOW PAVEMENT MARKINGS AT 45 DEGREES. (SEE PAVEMENT MARKING DIMENSION DRAWING.)
 - INSTALL THE PROPOSED STOP BAR.
 - INSTALL THE PROPOSED GROUND MOUNTED SIGN.
 - REMOVE THE EXISTING GROUND MOUNTED SIGN.



GEOMETRIC LEGEND

---	PROPOSED GEOMETRICS
---	EXISTING GEOMETRICS

UTILITY LEGEND

---	GAS MAIN
---	WATER MAIN
---	SEWER MAIN
---	ELECTRIC CABLES
---	STORM DRAIN
---	AERIAL CABLES
---	TELEPHONE CABLES

REVISIONS				APPROVALS			
1	08/19/98	INSTALL NEW LOOP DETECTORS, PAVEMENT MARKINGS & ALIGNED SIGNAL & SIGNS FOR N/B 85TH AVENUE	S.H.A. NO. AV-2779180	3/11			
2		TOTAL RECONSTRUCTION/PROVIDE MAST ARMS					
3		PROVIDE EXCLUSIVE/PERMISSIVE LEFT TURN PHASE FOR EAST/WEST APPROACHES FOR MD 450					
4		RELINE REVISION, ADD PAVEMENT MARKINGS & STOP SIGN TO SIDE STREET OFF N/B 85TH AVENUE (SENT TO APARTMENTS)					

MARYLAND DOT - STATE HIGHWAY ADMINISTRATION
Office of Traffic & Safety
TRAFFIC ENGINEERING DESIGN DIVISION

MD. 450 AND 85th AVENUE
 NEW CARROLTON, MARYLAND

LOG MILE # 16045004.69 DATE: 10-02-72

DRAWN BY: HR & BT	F.A.P. NO. U-931-1(2)	TS/STD. NO.	SHEET NO.
DES. BY: RWT	S.H.A. NO. P-420-000-385	TS-369	OF
CHK. BY:	COUNTY: PRINCE GEORGE'S		
SCALE: 1" = 20'			