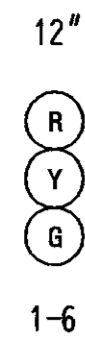
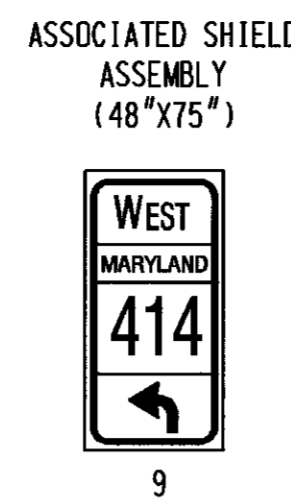
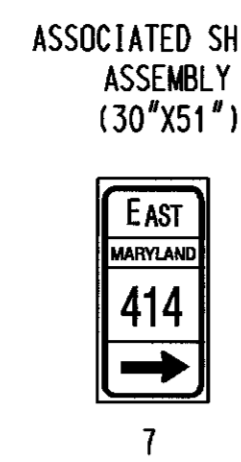
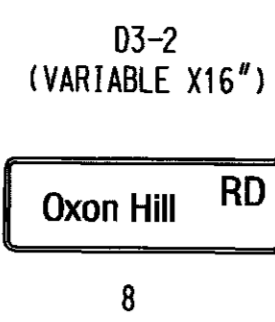


PROPOSED SIGNALS

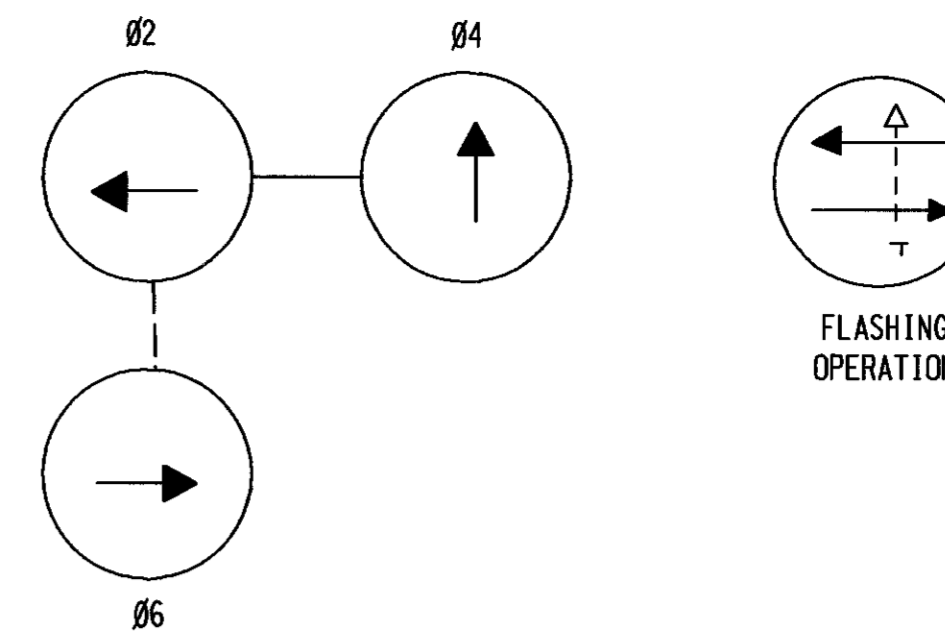


PROPOSED SIGNS



MD 414 OXON HILL ROAD IS ASSUMED TO RUN IN AN EAST-WEST DIRECTION

NEMA PHASING

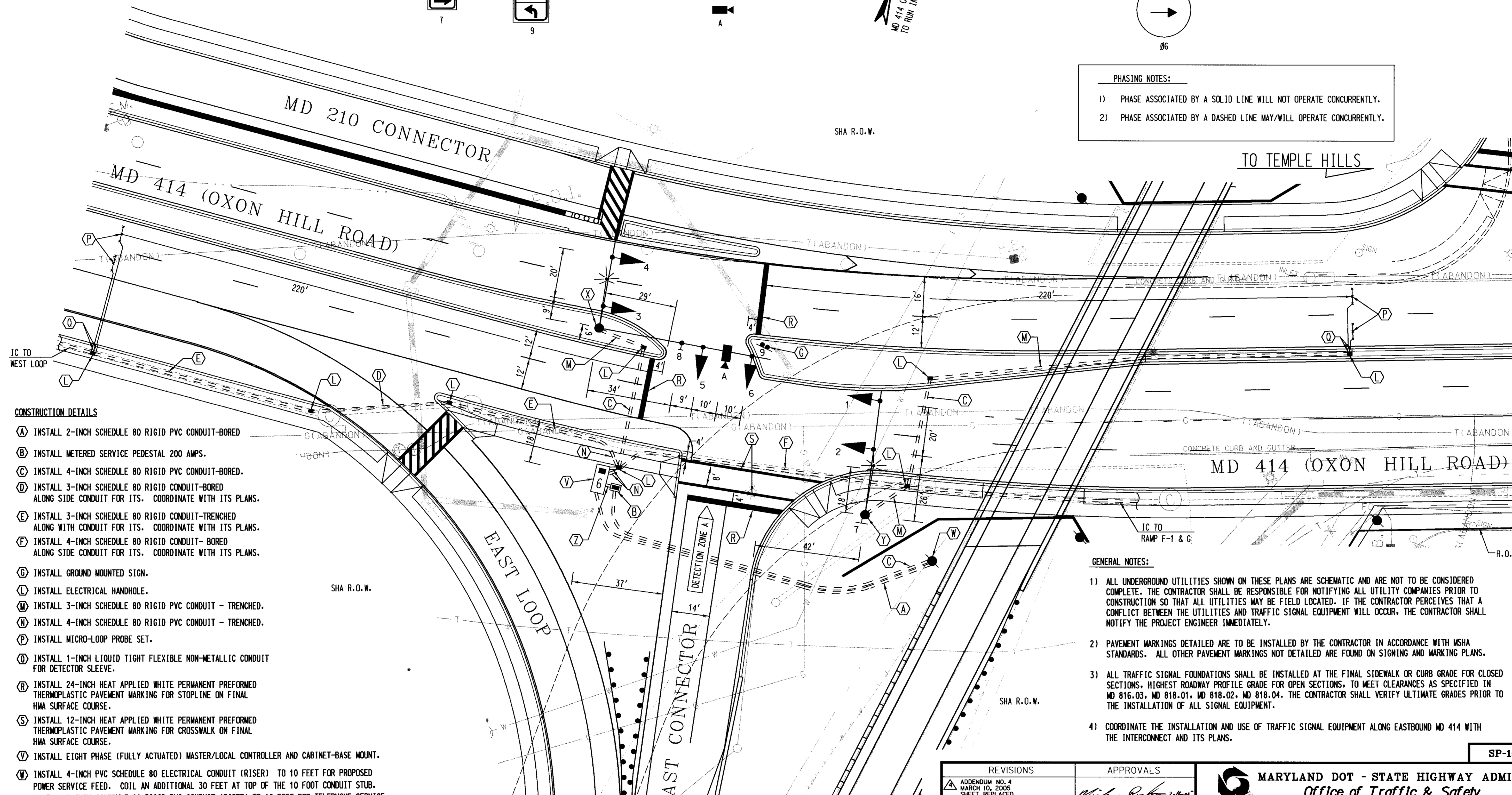


PHASING NOTES:

- 1) PHASE ASSOCIATED BY A SOLID LINE WILL NOT OPERATE CONCURRENTLY.
- 2) PHASE ASSOCIATED BY A DASHED LINE MAY/WILL OPERATE CONCURRENTLY.

TO FOREST HEIGHTS

TO TEMPLE HILLS



CONSTRUCTION DETAILS

- (A) INSTALL 2-INCH SCHEDULE 80 RIGID PVC CONDUIT-BORED
- (B) INSTALL METERED SERVICE PEDESTAL 200 AMPS.
- (C) INSTALL 4-INCH SCHEDULE 80 RIGID PVC CONDUIT-BORED.
- (D) INSTALL 3-INCH SCHEDULE 80 RIGID CONDUIT-BORED ALONG SIDE CONDUIT FOR ITS. COORDINATE WITH ITS PLANS.
- (E) INSTALL 3-INCH SCHEDULE 80 RIGID CONDUIT-TRENCHED ALONG WITH CONDUIT FOR ITS. COORDINATE WITH ITS PLANS.
- (F) INSTALL 4-INCH SCHEDULE 80 RIGID CONDUIT-BORED ALONG SIDE CONDUIT FOR ITS. COORDINATE WITH ITS PLANS.
- (G) INSTALL GROUND MOUNTED SIGN.
- (L) INSTALL ELECTRICAL HANDHOLE.
- (M) INSTALL 3-INCH SCHEDULE 80 RIGID PVC CONDUIT - TRENCHED.
- (N) INSTALL 4-INCH SCHEDULE 80 RIGID PVC CONDUIT - TRENCHED.
- (P) INSTALL MICRO-LOOP PROBE SET.
- (Q) INSTALL 1-INCH LIQUID TIGHT FLEXIBLE NON-METALLIC CONDUIT FOR DETECTOR SLEEVE.
- (R) INSTALL 24-INCH HEAT APPLIED WHITE PERMANENT PREFORMED THERMOPLASTIC PAVEMENT MARKING FOR STOPLINE ON FINAL HMA SURFACE COURSE.
- (S) INSTALL 12-INCH HEAT APPLIED WHITE PERMANENT PREFORMED THERMOPLASTIC PAVEMENT MARKING FOR CROSSWALK ON FINAL HMA SURFACE COURSE.
- (V) INSTALL EIGHT PHASE (FULLY ACTUATED) MASTER/LOCAL CONTROLLER AND CABINET-BASE MOUNT.
- (W) INSTALL 4-INCH PVC SCHEDULE 80 ELECTRICAL CONDUIT (RISER) TO 10 FEET FOR PROPOSED POWER SERVICE FEED. COIL AN ADDITIONAL 30 FEET AT TOP OF THE 10 FOOT CONDUIT STUB. INSTALL 2-INCH SCHEDULE 80 RIGID PVC CONDUIT (RISER) TO 10 FEET FOR TELEPHONE SERVICE.

GENERAL NOTES:

- 1) ALL UNDERGROUND UTILITIES SHOWN ON THESE PLANS ARE SCHEMATIC AND ARE NOT TO BE CONSIDERED COMPLETE. THE CONTRACTOR SHALL BE RESPONSIBLE FOR NOTIFYING ALL UTILITY COMPANIES PRIOR TO CONSTRUCTION SO THAT ALL UTILITIES MAY BE FIELD LOCATED. IF THE CONTRACTOR PERCEIVES THAT A CONFLICT BETWEEN THE UTILITIES AND TRAFFIC SIGNAL EQUIPMENT WILL OCCUR, THE CONTRACTOR SHALL NOTIFY THE PROJECT ENGINEER IMMEDIATELY.
- 2) PAVEMENT MARKINGS DETAILED ARE TO BE INSTALLED BY THE CONTRACTOR IN ACCORDANCE WITH MSHA STANDARDS. ALL OTHER PAVEMENT MARKINGS NOT DETAILED ARE FOUND ON SIGNING AND MARKING PLANS.
- 3) ALL TRAFFIC SIGNAL FOUNDATIONS SHALL BE INSTALLED AT THE FINAL SIDEWALK OR CURB GRADE FOR CLOSED SECTIONS, HIGHEST ROADWAY PROFILE GRADE FOR OPEN SECTIONS, TO MEET CLEARANCES AS SPECIFIED IN MD 816.03, MD 818.01, MD 818.02, MD 818.04. THE CONTRACTOR SHALL VERIFY ULTIMATE GRADES PRIOR TO THE INSTALLATION OF ALL SIGNAL EQUIPMENT.
- 4) COORDINATE THE INSTALLATION AND USE OF TRAFFIC SIGNAL EQUIPMENT ALONG EASTBOUND MD 414 WITH THE INTERCONNECT AND ITS PLANS.

UTILITY LEGEND

- G - GAS MAIN
- W - WATER MAIN
- S - SEWER MAIN
- E - ELECTRIC CABLES
- A - AERIAL CABLES
- T - TELEPHONE CABLES
- L(3) - LEVEL 3 FO CABLES
- FO - FIBER OPTIC CABLES

- (X) INSTALL 27 FOOT STEEL POLE WITH TWIN 50 FOOT (CUT TO 38 FEET) AND 70 FOOT MAST ARMS, SIGNAL HEADS, SIGN, VIDEO TRAFFIC DETECTION CAMERA, 20 FOOT LIGHTING ARM, 250 WATT HPS LAMP AND LUMINAIRE WITH PHOTOCCELL.
- (Y) INSTALL 27 FOOT STEEL POLE WITH 50 FOOT MAST ARM, SIGNAL HEADS, SIGNS, 20 FOOT LIGHTING ARM, 250 WATT HPS LAMP AND LUMINAIRE WITH PHOTOCCELL.
- (Z) INSTALL 2-INCH SCHEDULE 80 RIGID PVC CONDUIT - TRENCHED.

PLOTTED: 08:43 AM on Monday, February 14, 2005  
 BY: Mckenzie Pierre Division: Transportation  
 FILE: m:\988\0988\45\200502.dgn

**KCI**  
 TECHNOLOGIES  
 ENGINEERS  
 PLANNERS  
 SCIENTISTS  
 CONSTRUCTION MANAGERS  
 10 NORTH PARK DRIVE  
 HUNT VALLEY, MARYLAND  
 21030-1888  
 (410) 316-7800

REVISIONS		APPROVALS	
ADDENDUM NO. 4 MARCH 10, 2005 SHEET REPLACED		<i>William Park</i> 2/16/05 TEAM LEADER, TRAFFIC ENGINEERING DESIGN DIVISION	
		<i>John</i> 2/16/05 ASST. CHIEF TRAFFIC ENGINEERING DESIGN DIVISION	
		<i>John</i> 2/16/05 CHIEF TRAFFIC ENGINEERING DESIGN DIVISION	
		<i>John</i> 2/16/05 DIRECTOR, OFFICE OF TRAFFIC & SAFETY	

**MARYLAND DOT - STATE HIGHWAY ADMINISTRATION**  
 Office of Traffic & Safety  
**TRAFFIC ENGINEERING DESIGN DIVISION**

**TRAFFIC SIGNAL PLAN**  
 MD 414 OXON HILL ROAD AT NB MD 210 OFF RAMP (EAST CONNECTOR)

DRAWN BY: M. PIERRE	F.A.P. NO. SEE TITLE SHEET	TS NO. 4372
CHECKED BY: J. LAWRENCE	S.H.A. NO. PG3605173	SHEET NO. 295 of 402
SCALE: 1"=20'	COUNTY: PRINCE GEORGE'S	T.I.M.S. NO. E149
DATE: 12-7-04	LOG MILE: 16041400.08	

SP-15 OF SP-23