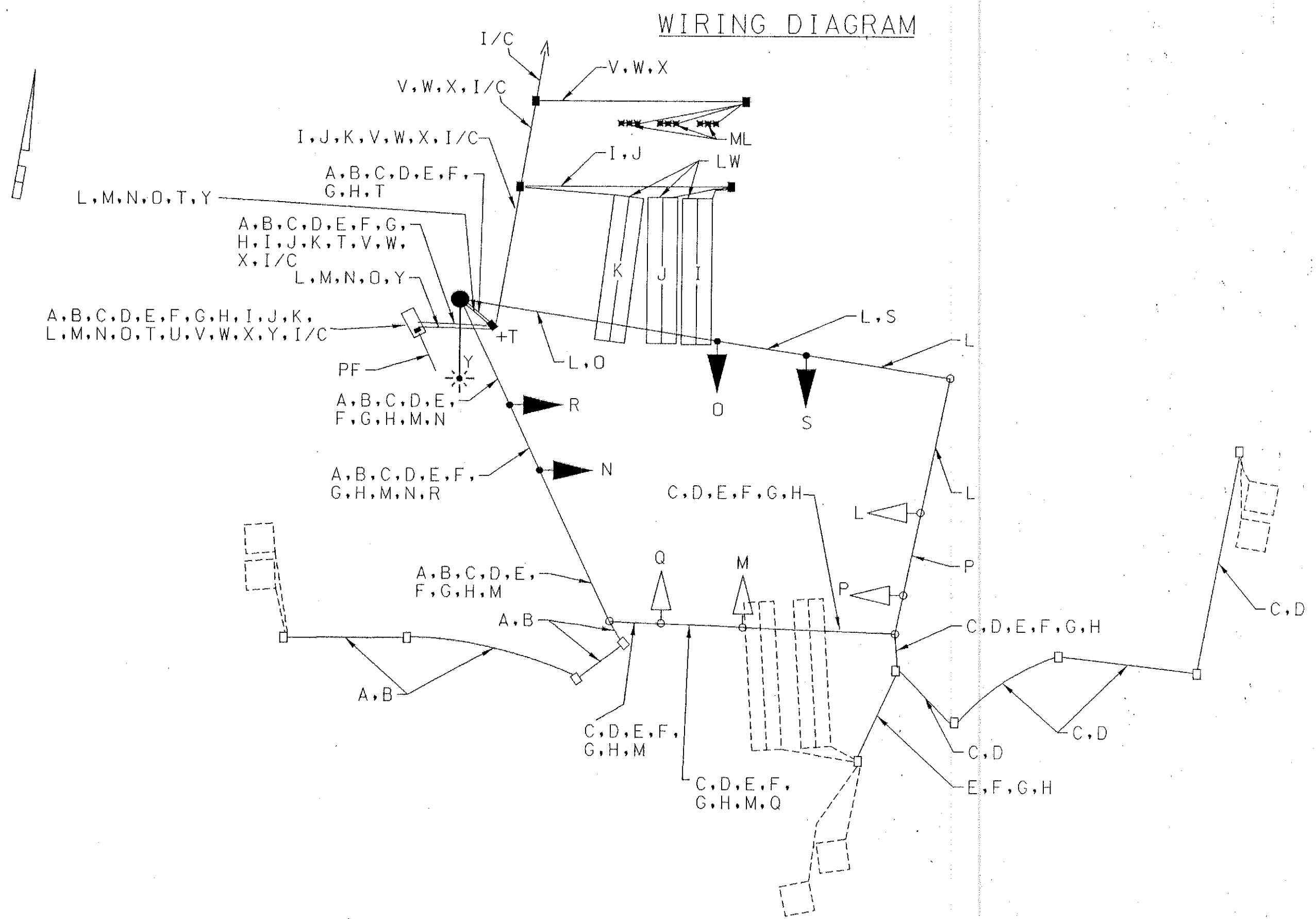


EQUIPMENT LIST 'B'

B. EQUIPMENT TO BE FURNISHED AND/OR INSTALLED BY THE CONTRACTOR

SPEC. SECTION	CATEGORY CODE NO.	QUANTITY	DESCRIPTION
205	203030	2 C.Y.	TEST PIT EXCAVATION
SPI-555	585446	4 E.A.	FURNISH AND INSTALL PERMANENT PREFORMED PAVEMENT MARKING LETTER
SPI-555	585448	1 E.A.	FURNISH AND INSTALL PERMANENT PREFORMED PAVEMENT MARKING ARROW
801	801004	6 C.Y.	FURNISH AND INSTALL CONCRETE FOR SIGNAL FOUNDATION
---	500000	210 L.F.	FURNISH AND INSTALL 12 IN. WHITE HEAT APPLIED PERMANENT PREFORMED PAVEMENT MARKING TAPE (STOP LINE)
---	500000	60 L.F.	FURNISH AND INSTALL 24 IN. WHITE HEAT APPLIED PERMANENT PREFORMED PAVEMENT MARKING TAPE (STOP LINE)
804	837001	1 EACH	FURNISH AND INSTALL GROUND ROD - 3/4 IN. DIAMETER x 10 FT. LENGTH
805	800000	265 L.F.	FURNISH AND INSTALL 3 IN. SCHEDULE 80 RIGID PVC CONDUIT - TRENCHED
805	800000	40 L.F.	FURNISH AND INSTALL 4 IN. SCHEDULE 80 RIGID PVC CONDUIT - TRENCHED
805	805160	30 L.F.	FURNISH AND INSTALL 1 IN. LIQUID TIGHT FLEXIBLE NON-METALLIC CONDUIT FOR DETECTOR SLEEVE
805	870127	135 L.F.	FURNISH AND INSTALL 3 IN. SCHEDULE 80 SLOTTED IN ROADWAY
806	831010	1 EACH	FURNISH AND INSTALL 250 WATT H.P.S. LAMP AND LUMINAIRE
807	807205	1 EACH	FURNISH AND INSTALL CONTROL AND DISTRIBUTION EQUIPMENT
810	861116	106 L.F.	FURNISH AND INSTALL ELECTRICAL CABLE - 2 CONDUCTOR TYPE T/C (NO. 12 AWG)
810	802501	40 L.F.	FURNISH AND INSTALL STRANDED BARE COPPER GROUND WIRE (NO. 6 AWG)
810	861104	5000 L.F.	FURNISH AND INSTALL ELECTRICAL CABLE - 2 CONDUCTOR ALUMINUM SHIELDED
810	861107	120 L.F.	FURNISH AND INSTALL ELECTRICAL CABLE - 5 CONDUCTOR (NO. 14 AWG)
810	861108	840 L.F.	FURNISH AND INSTALL ELECTRICAL CABLE - 7 CONDUCTOR (NO. 14 AWG)
810	862101	1,400 L.F.	FURNISH AND INSTALL LOOP WIRE ENCASED IN FLEXIBLE TUBING (NO. 14 AWG)
811	811001	5 EACH	FURNISH AND INSTALL ELECTRICAL HANDHOLE
813	801605	52 S.F.	INSTALL OVERHEAD SIGN
814	800000	2 EACH	RELOCATE SIGNAL HEAD - SPAN MOUNT
816	800000	4 EACH	FURNISH AND INSTALL FOUR CHANNEL LOOP DETECTOR AMPLIFIERS (DELAY OUTPUT)
815	862102	475 L.F.	FURNISH AND INSTALL SAW CUT FOR SIGNAL (LOOP DETECTOR)
816	800000	1 EACH	FURNISH AND INSTALL EIGHT PHASE, FULLY-ACTUATED TRAFFIC SIGNAL CONTROLLER IN A NEMA SIZE '6' BASE MOUNTED SYSTEM READY CABINET
818	866104	1 EACH	FURNISH AND INSTALL 20 FT. LIGHTING ARM ON SIGNAL STRUCTURE
818	800000	1 EACH	FURNISH AND INSTALL 14"x32" 2 PLY STEEL STRAIN POLE
---	800000	L.S.	REMOVE AND DISPOSE OF EXISTING MATERIAL AND EQUIPMENT
---	873001	L.S.	REMOVE EXISTING SIGNAL EQUIPMENT TO BE SALVAGED
---	800000	L.S.	DELIVERY OF SALVAGED MATERIALS
819	869101	180 L.F.	FURNISH AND INSTALL 1/4" SPAN WIRE
819	869102	315 L.F.	FURNISH AND INSTALL 3/8" SPAN WIRE
---	800000	3 EA.	FURNISH AND INSTALL MICROLOOP PROBE SET WITH 500 FT. LEAD-IN
814	806102	3 EACH	FURNISH AND INSTALL 12 IN., 1-WAY, 3-SECTION (R.Y.G.) SIGNAL HEAD SPAN MOUNT
814	806107	1 EACH	FURNISH AND INSTALL 12 IN., 1-WAY, 4-SECTION (R.Y.G.A) SIGNAL HEAD SPAN MOUNT
816	800000	1 EACH	FURNISH AND INSTALL EIGHT PHASE, FULLY-ACTUATED TRAFFIC SIGNAL CONTROLLER IN A NEMA SIZE '6' BASE MOUNTED SYSTEM READY CABINET
813	800000	52 S.F.	INSTALL SHEET ALUMINUM SIGNS
			- 2 EACH R3-5L SIGN (30"x36") "LANE USE CONTROL - LEFT TURN ONLY" SPAN WIRE MOUNT
			- 1 EACH R3-5R SIGN (30"x36") "LANE USE CONTROL - RIGHT TURN ONLY" SPAN WIRE MOUNT
			- 1 EACH R3-6 SIGN (30"x36") "LANE USE CONTROL - THRU LEFT" SPAN WIRE MOUNT
			- 2 EACH D3-1 SIGN (VARIABLEx16") (ADVANCE STREET NAME PANEL) DUAL FACED - SPAN WIRE MOUNT



**WIRING KEY**

A, B, C, D, E, F, G, H, I, J, K	} 2-CONDUCTOR ELECTRICAL CABLE (ALUMINUM SHIELDED)	T	} STRANDED BARE COPPER GROUND WIRE (NO. 6 A.W.G.)
L, M, N, O	} 7-CONDUCTOR ELECTRICAL CABLE (NO. 14 A.W.G.)	U	} 3-CONDUCTOR ELECTRICAL CABLE (NO. 4 A.W.G.)
P, Q, R, S	} 5-CONDUCTOR ELECTRICAL CABLE (NO. 14 A.W.G.)	ML	- MICRO LOOP PROBE SET WITH 500 LEAD-IN
V, W, X	} MICRO LOOP LEAD-IN	LW	- LOOP WIRE (NO. 14 A.W.G.)
Y	} 2-CONDUCTOR ELECTRICAL CABLE (NO. 12 A.W.G.)	PF	- POWER FEED (NO. 4 A.W.G.)
		I/C	- 12 PAIR JELLY FILLED COMMUNICATION CABLE + 3/4 IN. x 10 FT. GROUND ROD

NOTE: INTERCONNECT CABLE WILL BE INSTALLED AFTER THE SIGNAL TO THE NORTH IS INSTALLED BY THE SIGNAL CONTRACTOR.

EQUIPMENT LIST 'C'

C. EQUIPMENT TO BE REMOVED BY THE CONTRACTOR AND DELIVERED TO THE STATE HIGHWAY ADMINISTRATION, 7491 CONNELLEY DRIVE, HANOVER, MARYLAND 21076.

QUANTITY	DESCRIPTION
1 EACH	TRAFFIC SIGNAL STRAIN POLE.
1 EACH	TRAFFIC SIGNAL CONTROLLER AND CABINET.

NOTES: 1. THE CONTRACTOR SHALL NOTIFY THE SHA AT 410-787-7652 AT LEAST THREE DAYS IN ADVANCE OF DELIVERY.  
2. ALL EQUIPMENT TO BE REMOVED AND NOT LISTED ABOVE SHALL BECOME THE PROPERTY OF THE CONTRACTOR.

	1	2	3	4	5	6	7	8
PHASE 2+6	G	G	G	G	R	R	R	R
2+6 CHANGE	Y	Y	Y	Y	R	R	R	R
PHASE 3	R	R	R	R	G/YG	G	R	R
3 CHANGE	R	R	R	R	Y	Y	R	R
PHASE 4	R	R	R	R	R	R	G/YG	G
4 CHANGE	R	R	R	R	R	R	Y	Y
FLASHING OPERATION	FL/Y	FL/Y	FL/Y	FL/Y	FL/R	FL/R	FL/R	FL/R

PROJECT DESCRIPTION

THIS PROJECT INVOLVES THE MODIFICATION OF THE TRAFFIC SIGNAL AT JENNIFER ROAD AND US 50 RAMPS E AND F/MEDICAL BOULEVARD IN ANNE ARUNDEL COUNTY. JENNIFER ROAD IS ASSUMED TO RUN IN AN EAST-WEST DIRECTION.

INTERSECTION OPERATION

1. NORMAL OPERATION

THE INTERSECTION WILL OPERATE IN A NEMA (4) FOUR-PHASE SEMI-TRAFFIC-ACTUATED MODE WITH EASTBOUND AND WESTBOUND JENNIFER ROAD APPROACHES OPERATING CONCURRENTLY. THE US 50 RAMP/MEDICAL BOULEVARD APPROACHES OPERATE AS SPLIT PHASES.

CONTROLLER REQUIREMENTS:

A FULLY-TRAFFIC-ACTUATED EIGHT PHASE TRAFFIC SIGNAL CONTROLLER IN A BASE-MOUNTED SYSTEM READY CABINET WITH FOUR (4) FOUR - CHANNEL LOOP DETECTOR AMPLIFIERS, INTERSECTION MONITOR WITH BATTERY BACK-UP FOR PHONE DROP AND ASSOCIATED HARNESSSES HOUSED IN A NEMA SIZE '6' BASE MOUNTED CABINET.

SPECIAL NOTE:

UPON COMPLETION OF THIS PROJECT, THE CONTRACTOR SHALL NOTIFY MR. ROBERT SNYDER OF THE SHA AT (410) 787-7631 TO ARRANGE FOR THE PHONE LINE INSTALLATION. THE CONTRACTOR IS TO PROVIDE MR. SNYDER WITH THE NEAREST STREET ADDRESS, ZIP CODE AND PHONE NUMBER.

PROJECT CONTACTS

THE CONTACT PERSONS FOR DISTRICT #5 ARE AS FOLLOWS:

MR. PAUL ARMSTRONG  
DISTRICT ENGINEER  
PHONE: (410) 841-5450

MR. LAWRENCE E. ELLIOTT  
ASSISTANT DISTRICT ENGINEER - TRAFFIC  
PHONE: (410) 841-5450

MR. JOHN MAYS  
UTILITY ENGINEER  
PHONE: (410) 841-5450

MR. RICHARD L. DAFF, SR.  
CHIEF, TRAFFIC OPERATIONS DIVISION  
PHONE: (410) 787-7630

THE POWER COMPANY REPRESENTATIVE IS:  
BALTIMORE GAS ELECTRIC COMPANY  
ATTN: MR. BERNIE THUMAN  
SUPERVISOR  
INDUSTRIAL/COMMERCIAL SERVICES  
NEW BUSINESS CONSTRUCTION  
7317 PARKWAY DRIVE SOUTH  
HANOVER, MARYLAND 21076  
PHONE: (410) 859-9030

**R&K**  
RUMMEL, KLEPPER & KAHL, LLP  
CONSULTING ENGINEERS

81 MOSHER STREET  
BALTIMORE, MARYLAND 21217  
TEL: (410) 728-2900 FAX: (410) 383-3270

REVISIONS	APPROVALS
	TEAM LEADER, TRAFFIC ENGINEERING DESIGN DIVISION
	ASST. CHIEF TRAFFIC ENGINEERING DESIGN DIVISION
	CHIEF TRAFFIC ENGINEERING DESIGN DIVISION
	DIRECTOR, TRAFFIC & SAFETY

**MARYLAND DOT - STATE HIGHWAY ADMINISTRATION**  
Office of Traffic & Safety  
**TRAFFIC ENGINEERING DESIGN DIVISION**  
JENNIFER ROAD @ US 50 RAMP/MEDICAL PARKWAY  
SIGNAL PLAN

DRAWN BY: CH	F.A.P. NO. N/A	TS NO. 2403A
CHECKED BY: SMH	S.H.A. NO. BW294M83	SHEET NO.
SCALE: NOT TO SCALE	COUNTY: ANNE ARUNDEL	T.I.M.S. NO. 0785
DATE: 4/27/2000	LOG MILE: 02CJEN0056	2 OF 2

PARTIAL RECONSTRUCT DUE TO NEW GEOMETRICS  
A.A. CO. PROJECT NO. 361000  
4/27/2000