

PROJECT DESCRIPTION

GENERAL

THIS PORTION OF THE PROJECT INVOLVES THE FULL RECONSTRUCTION OF THE EXISTING TRAFFIC SIGNAL WITH LED SIGNAL HEADS, ACCESSIBLE PEDESTRIAN SIGNALS (APS), AND LED COUNTDOWN PEDESTRIAN SIGNALS (CPS) AT THE INTERSECTION OF MD 355 (ROCKVILLE PIKE) AND DODGE STREET/RICHARD MONTGOMERY DRIVE IN MONTGOMERY COUNTY.

MD 355 IS ASSUMED TO RUN IN A NORTH-SOUTH DIRECTION.

INTERSECTION OPERATION

THE INTERSECTION WILL CONTINUE TO OPERATE IN A NEMA FIVE-PHASE, FULLY-TRAFFIC-ACTUATED MODE WITH EXCLUSIVE/PERMISSIVE LEFT-TURN PHASING FOR NORTHBOUND MD 355. THE MAINLINE AND ALTERNATIVE SIDE STREET PEDESTRIAN PHASES AND EASTBOUND CONCURRENT RIGHT TURN PHASE WILL REMAIN.

CONTROLLER REQUIREMENTS

INSTALL A NEW EIGHT-PHASE FULLY ACTUATED TRAFFIC SIGNAL ASC III CONTROLLER AND ASSOCIATED HARNESSES IN A NEMA SIZE 'S' BASE MOUNTED CABINET. THE MONTGOMERY COUNTY SIGNAL SHOP WILL INSTALL ONE (1) 2 WIRE CENTRAL CONTROL UNIT, ONE (1) VIDEO DETECTION INTERFACE EQUIPMENT, AND ALL OTHER ASSOCIATED EQUIPMENT AND HARNESSES WITHIN THE CABINET.

APS WILL FUNCTION AS FOLLOWS:

TO CROSS MD 355 (ROCKVILLE PIKE) AT DODGE STREET:

A. WHEN A PEDESTRIAN LOCATES AND PRESSES THE PUSHBUTTON FOR AN EXTENDED TIME, THE PUSHBUTTON MESSAGE WILL BE "WAIT TO CROSS ROCKVILLE AT DODGE, WAIT".

B. WHEN THE "WALK" PHASE BEGINS, THE MESSAGE WILL BE A RAPID TICK, WHICH WILL LAST FOR THE DURATION OF THE "WALK" PHASE.

TO CROSS MD 355 (ROCKVILLE PIKE) AT RICHARD MONTGOMERY DRIVE:

A. WHEN A PEDESTRIAN LOCATES AND PRESSES THE PUSHBUTTON FOR AN EXTENDED TIME, THE PUSHBUTTON MESSAGE WILL BE "WAIT TO CROSS ROCKVILLE AT RICHARD MONTGOMERY, WAIT".

B. WHEN THE "WALK" PHASE BEGINS, THE MESSAGE WILL BE A RAPID TICK, WHICH WILL LAST FOR THE DURATION OF THE "WALK" PHASE.

TO CROSS RICHARD MONTGOMERY DRIVE AT MD 355 (ROCKVILLE PIKE):

A. WHEN A PEDESTRIAN LOCATES AND PRESSES THE PUSHBUTTON FOR AN EXTENDED TIME, THE PUSHBUTTON MESSAGE WILL BE "WAIT TO CROSS RICHARD MONTGOMERY AT ROCKVILLE, WAIT".

B. WHEN THE "WALK" PHASE BEGINS, THE MESSAGE WILL BE A RAPID TICK, WHICH WILL LAST FOR THE DURATION OF THE "WALK" PHASE.

TO CROSS DODGE STREET AT MD 355 (ROCKVILLE PIKE):

A. WHEN A PEDESTRIAN LOCATES AND PRESSES THE PUSHBUTTON FOR AN EXTENDED TIME, THE PUSHBUTTON MESSAGE WILL BE "WAIT TO CROSS DODGE AT ROCKVILLE, WAIT".

B. WHEN THE "WALK" PHASE BEGINS, THE MESSAGE WILL BE A RAPID TICK, WHICH WILL LAST FOR THE DURATION OF THE "WALK" PHASE.

THE CONTACT PERSONS FOR DISTRICT #3 ARE AS FOLLOWS:

Ms. Anyesha Mookherjee
Assistant District Engineer - Traffic
Phone: 301-513-7498

Mr. Victor Grafton
District Utility Engineer
Phone: 301-513-7350

Mr. Thomas Fountain
Assistant District Engineer - Maintenance
Phone: 301-513-7304

OFFICE OF TRAFFIC AND SAFETY:

Ms. Corren Johnson
Chief, Traffic Operations Division
Phone: 410-787-7630

VACANT
Assistant Division Chief, Traffic Operations
410-787-7630

Mr. Edward Rodenhizer
Chief Signal Operations
Phone: 410-787-7650

Mr. Eugene Bailey
Chief Signal Operations
410-787-7670

MONTGOMERY COUNTY:

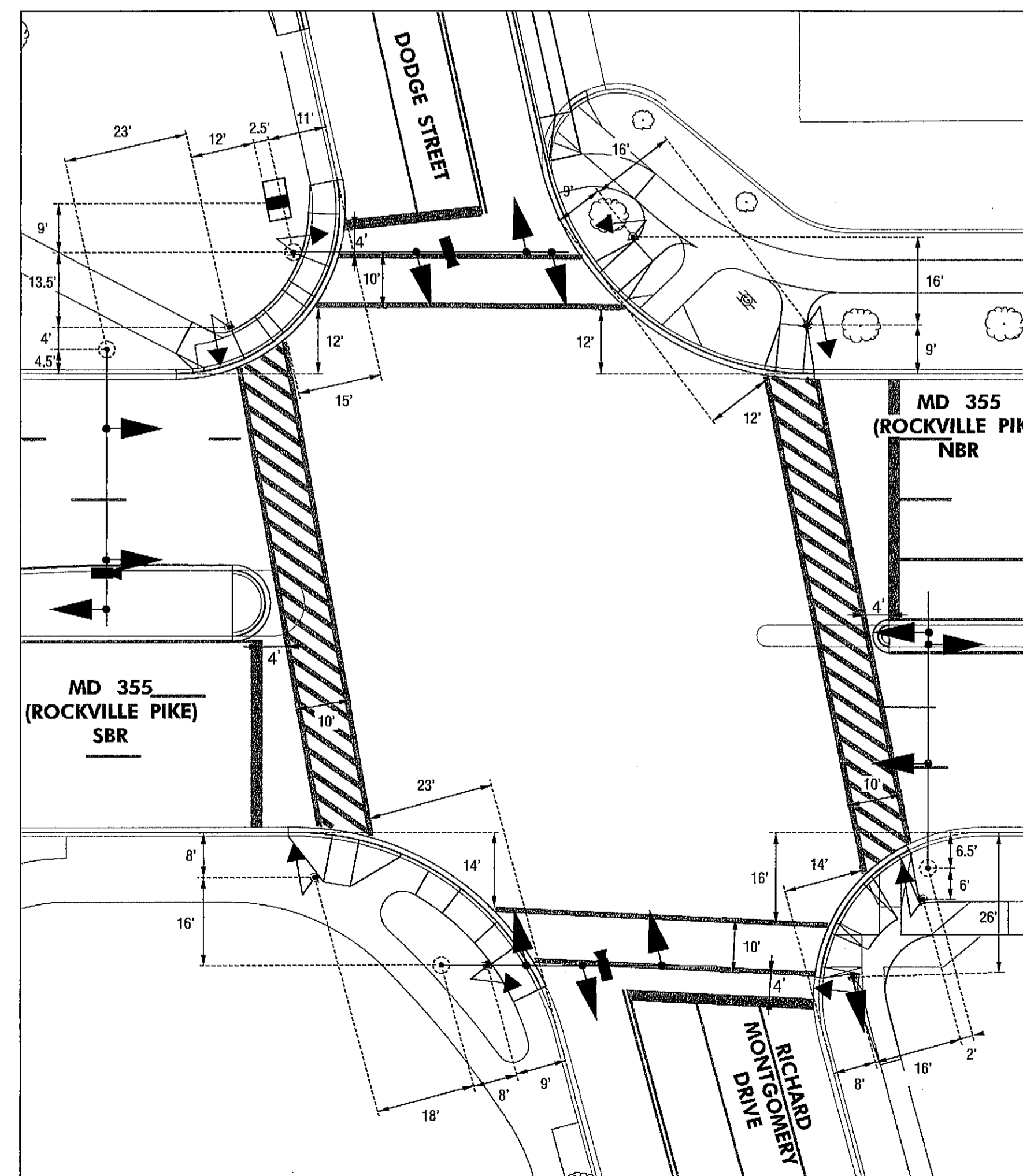
Mr. Kamal Hamud
Traffic Engineering
240-777-8761

The Power Company is:
PEPCO
Ms. Cheryl Hunt
201 W. Gude Drive
Rockville, MD 20850
Phone: 301-548-4329

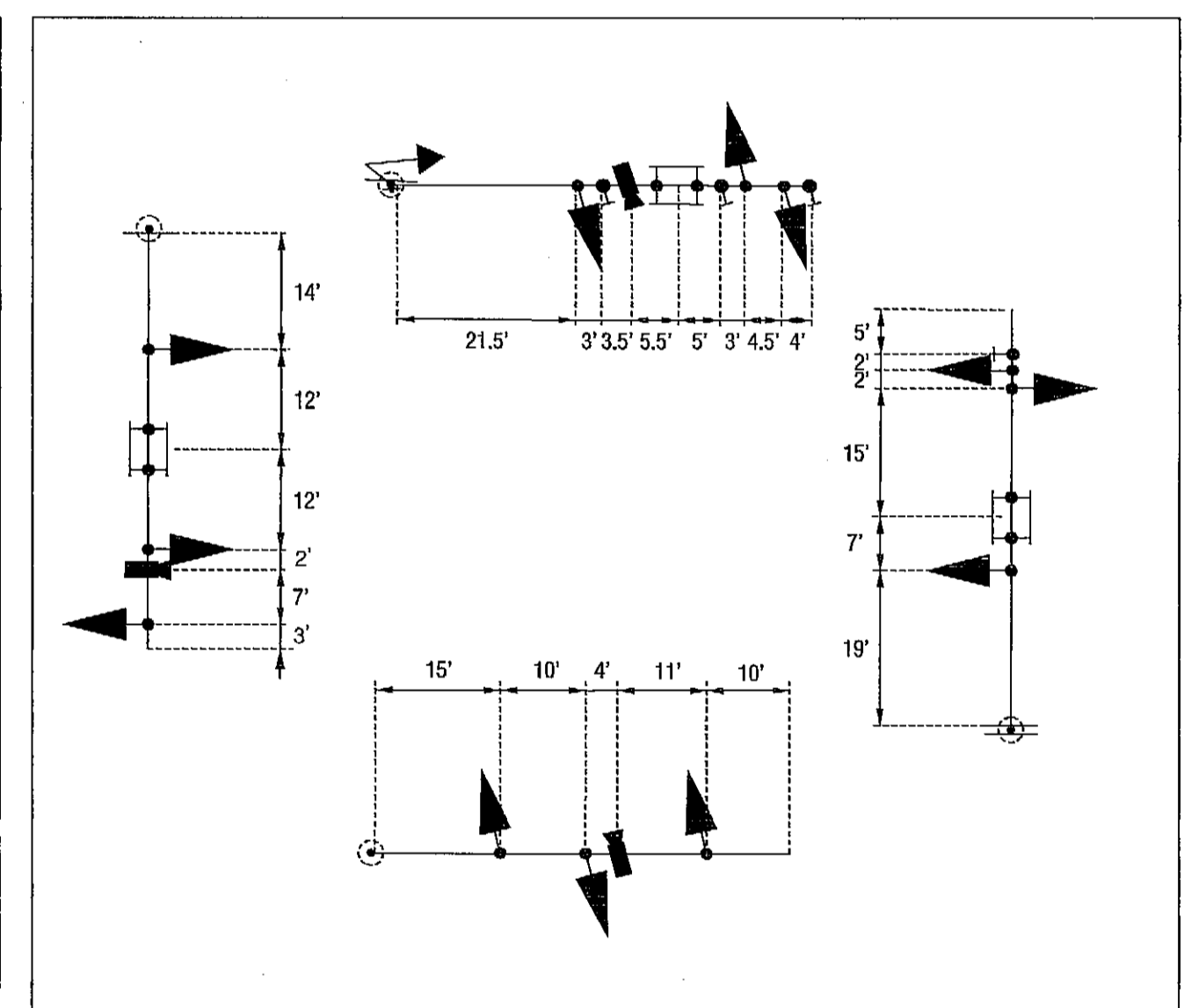
PHASE CHART

	1	2	3	4	5	6	7	8	9	10	11	12	13	14	15	16	17	18	19	20	21
PHASE 2 AND 5	RG+	RG+	G	R	R	R	R	R	R	RG+	RG+	R	R	R	DW	WK	WK	DW	DW	DW	DW
PHASE 5 CHANGE	+YG	+YG	G	R	R	R	R	R	R	RY+	RY+	R	R	R	DW	WK	WK	DW	DW	DW	DW
PHASE 2 AND 6	G	G	G	G	G	G	R	R	R	R	R	R	R	R	WK	WK	WK	DW	DW	DW	DW
PED CLEARANCE	G	G	G	G	G	G	R	R	R	R	R	R	R	R	FLOW	FLDW	FLDW	FLDW	DW	DW	DW
PHASE 2 AND 6 CHANGE	Y	Y	Y	Y	Y	Y	R	R	R	R	R	R	R	R	DW	DW	DW	DW	DW	DW	DW
PHASE 4 AND 8	R	R	R	R	R	R	G	G	G	G	G	G	G	G	DW	DW	DW	DW	DW	DW	DW
PHASE 4 AND 8 CHANGE	R	R	R	R	R	R	Y	Y	Y	Y	Y	Y	Y	Y	DW	DW	DW	DW	DW	DW	DW
PHASE 4 AND 8 ALT	R	R	R	R	R	R	G	G	G	G	G	G	G	G	DW	DW	DW	WK	WK	WK	WK
PED CLEARANCE	R	R	R	R	R	R	G	G	G	G	G	G	G	G	DW	DW	DW	FLOW	FLDW	FLDW	FLDW
PHASE 4 AND 8 ALT CHANGE	R	R	R	R	R	R	Y	Y	Y	Y	Y	Y	Y	Y	DW	DW	DW	DW	DW	DW	DW
FLASHING OPERATION	FL/Y	FL/Y	FL/Y	FL/Y	FL/Y	FL/Y	FL/R	FL/R	FL/R	FL/R	FL/R	FL/R	FL/R	FL/R	DARK	DARK	DARK	DARK	DARK	DARK	DARK

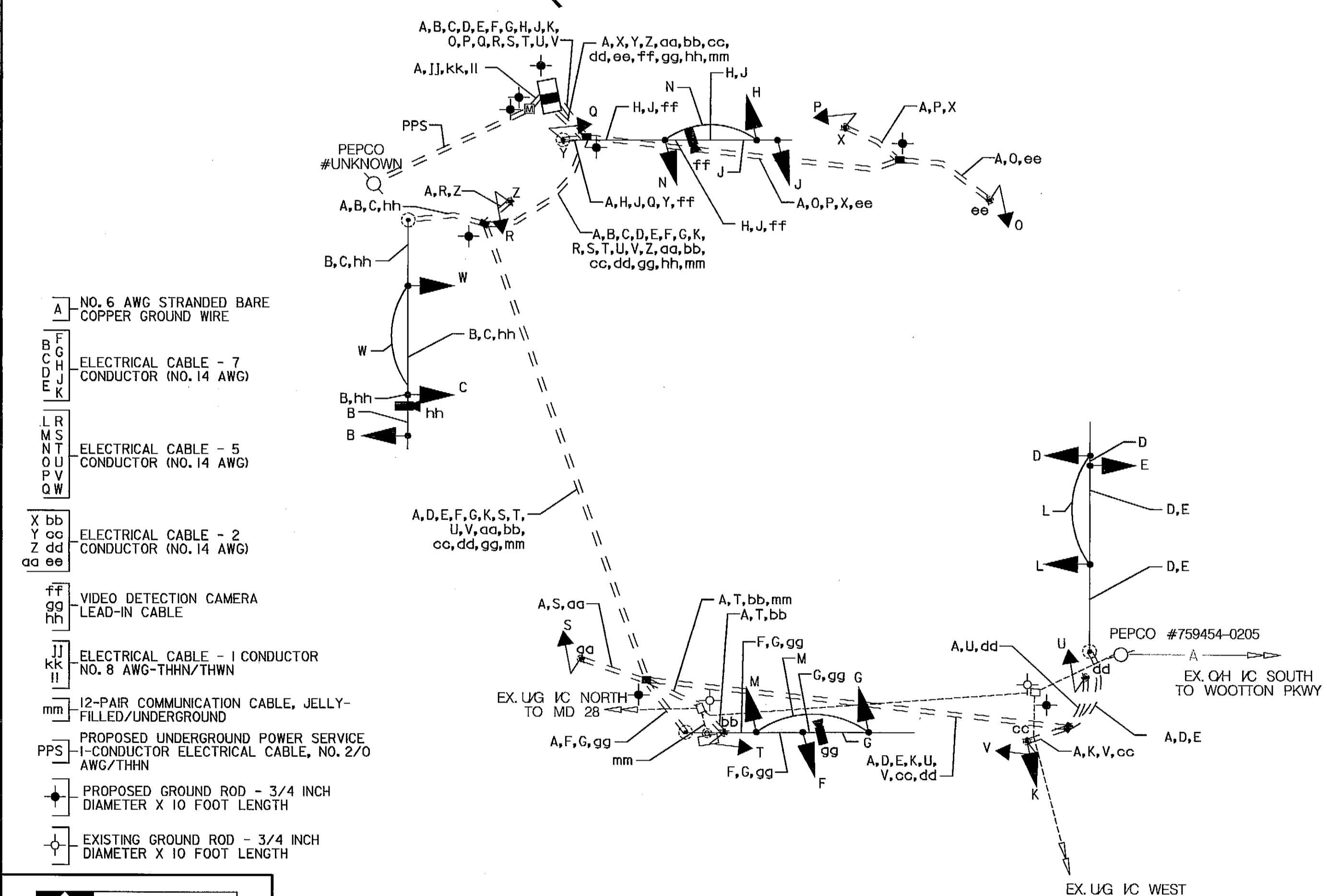
PROPOSED SIGNAL EQUIPMENT AND PAVEMENT MARKING LAYOUT - 1"=20'



MAST ARM DETAILS



WIRING DIAGRAM



STV
STV Incorporated
7125 Ambassador Road, Suite 200
Baltimore, MD 21244
www.stvinc.com

SHA STATE OF MARYLAND
DEPARTMENT OF TRANSPORTATION
STATE HIGHWAY ADMINISTRATION
OFFICE OF TRAFFIC & SAFETY
TRAFFIC ENGINEERING DESIGN DIVISION
MD 355 (ROCKVILLE PIKE) AT
DODGE STREET / RICHARD MONTGOMERY DRIVE
ROCKVILLE, MD

GENERAL INFORMATION SHEET

SCALE NONE ADVERTISED DATE 10/2013 CONTRACT NO. MC1815477

DESIGNED BY SKG OF STV COUNTY MONTGOMERY
DRAWN BY SKG OF STV LOGMILE 15035509.05
CHECKED BY SDY OF STV TMS NO. L765
F.A.P. NO. TOD NO.

TS NO. 49C-GI DRAWING SG-02 OF 05 SHEET NO. OF