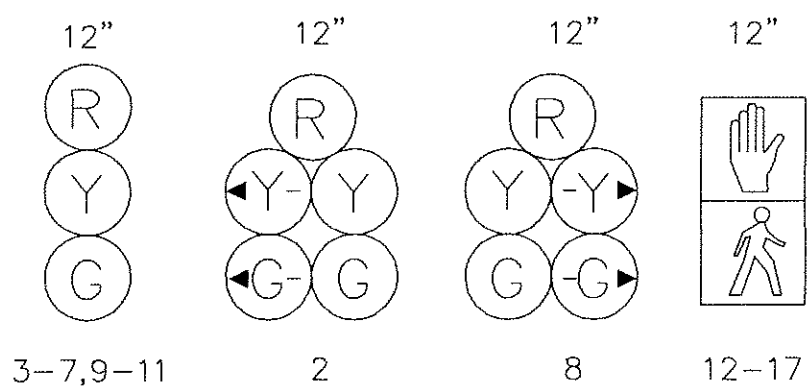
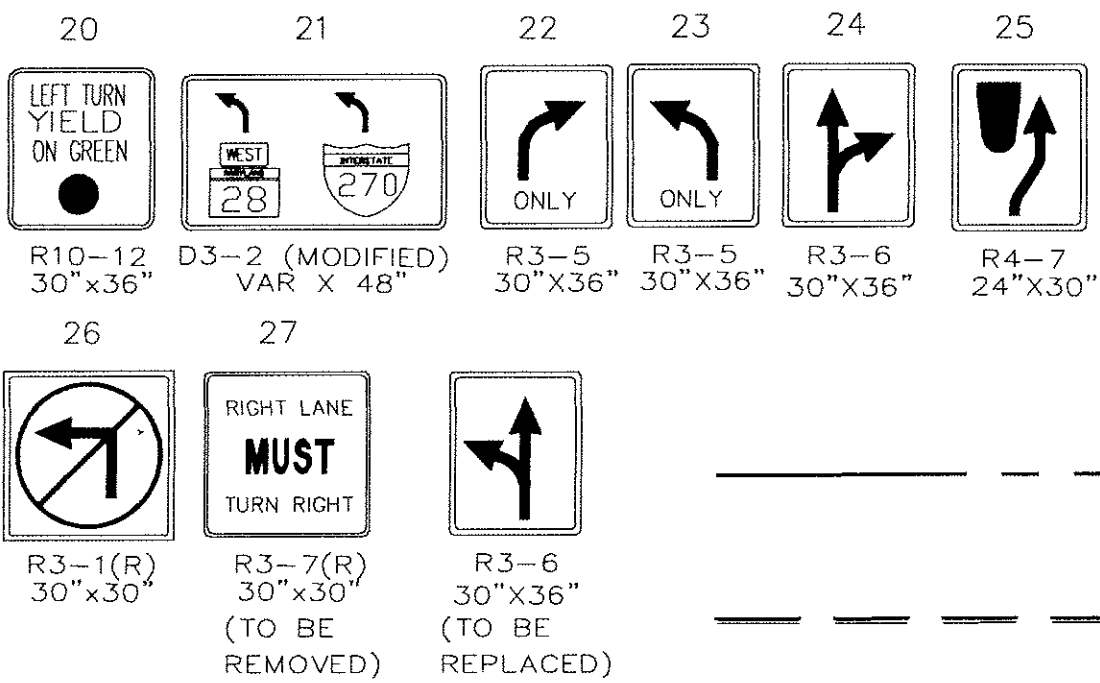


F. H. WA. REGION NO.	STATE	FED. AID PROJ. NO.	SHEET NO.	TOTAL SHEETS
3	MD.		1	2

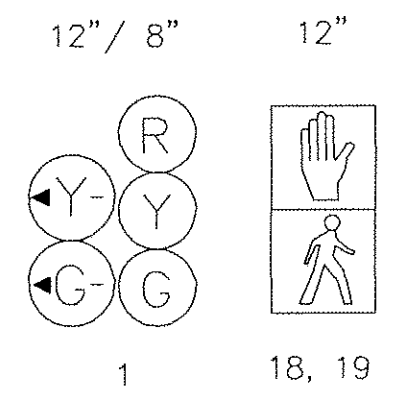
EXISTING SIGNALS



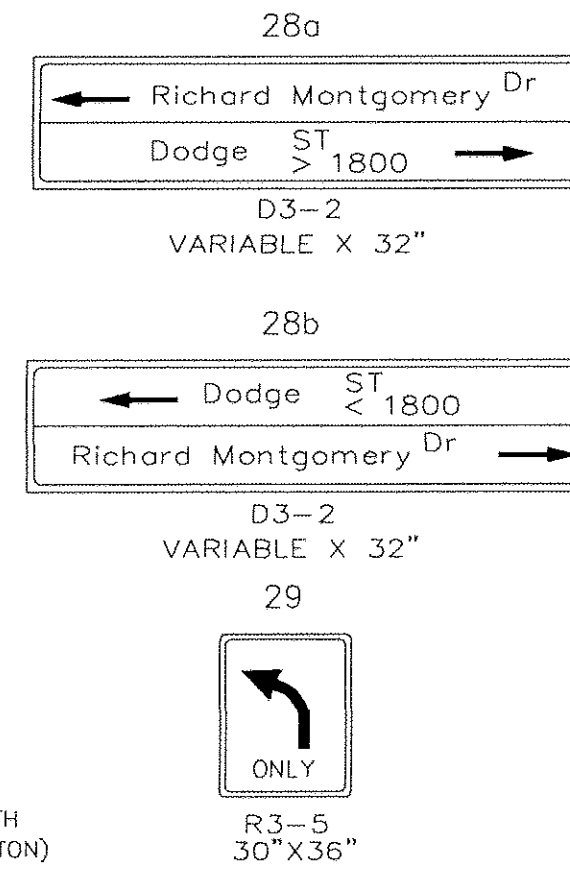
EXISTING SIGNS



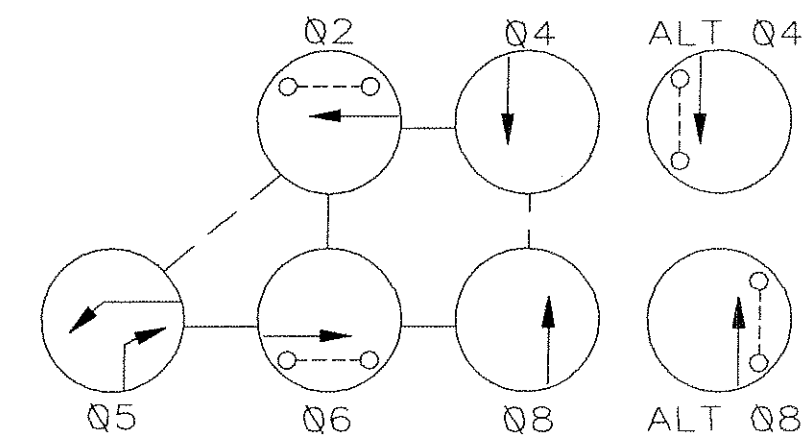
PROPOSED SIGNAL



PROPOSED SIGNS



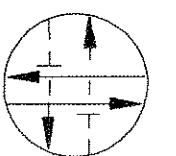
NEMA PHASING



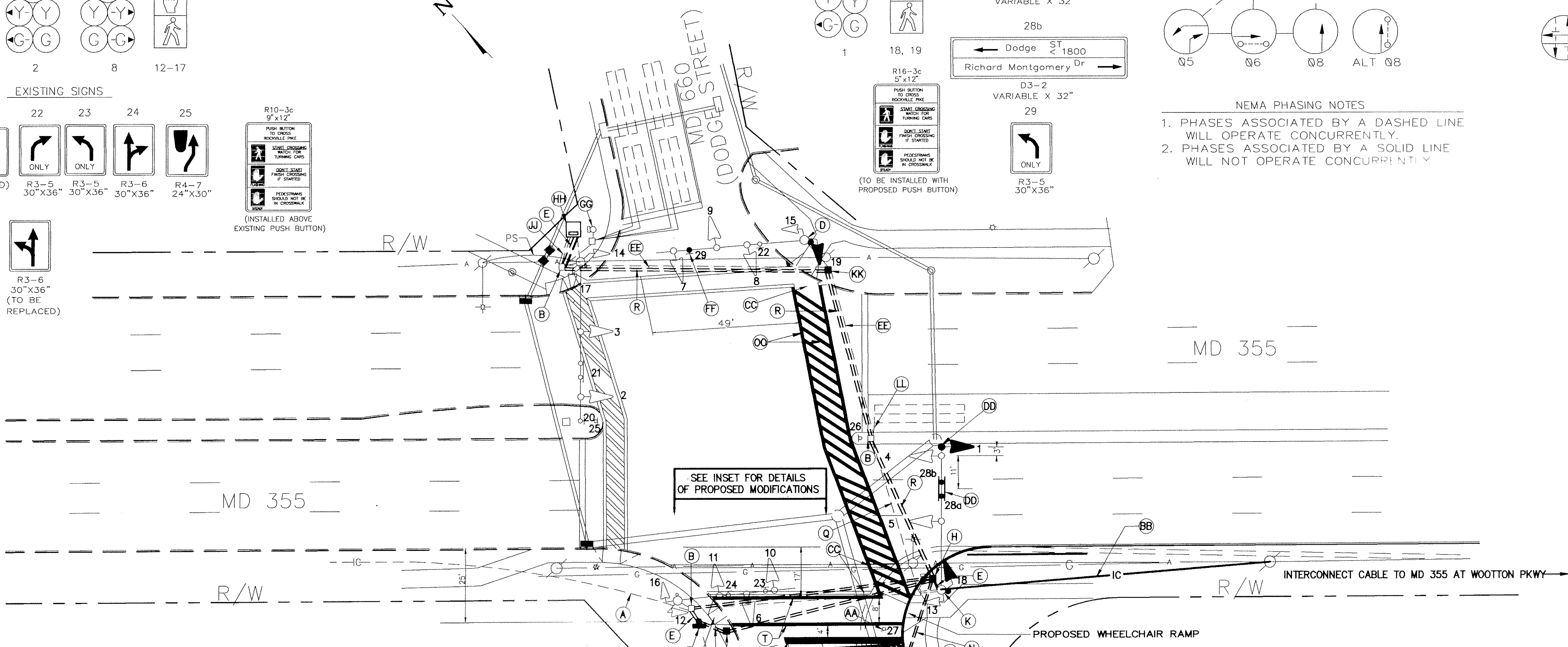
NEMA PHASING NOTES

1. PHASES ASSOCIATED BY A DASHED LINE WILL OPERATE CONCURRENTLY.
2. PHASES ASSOCIATED BY A SOLID LINE WILL NOT OPERATE CONCURRENTLY.

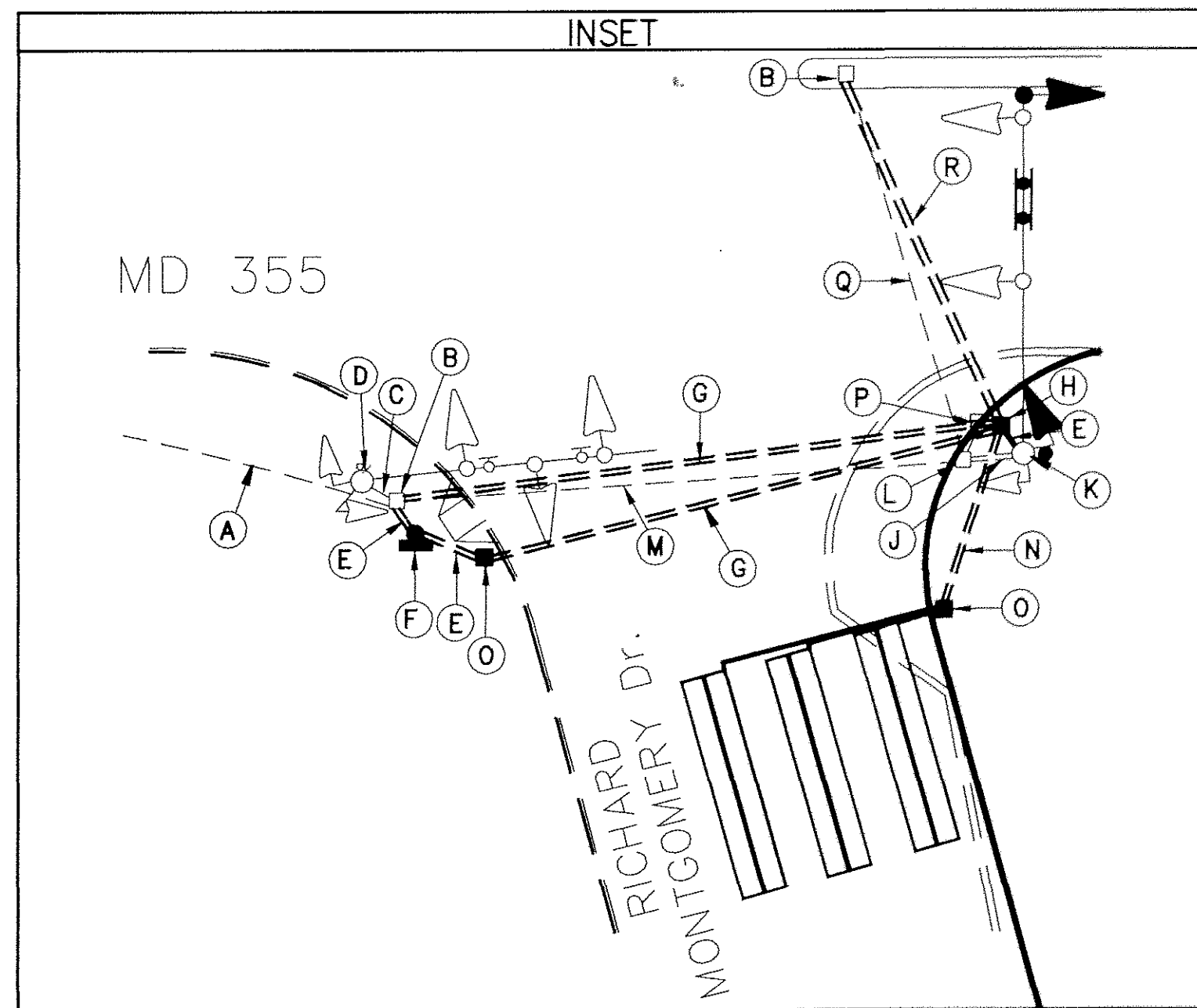
FLASHING OPERATION



MD 355 IS ASSUMED TO RUN IN A NORTH/SOUTH DIRECTION



SEE INSET FOR DETAILS OF PROPOSED MODIFICATIONS



GENERAL NOTES

1. PAVEMENT MARKINGS DETAILED ARE PROPOSED AND ARE TO BE INSTALLED BY THE TRAFFIC SIGNAL CONTRACTOR IN ACCORDANCE WITH SHA STANDARDS.
2. LOOP DETECTORS AND SLOTTED CONDUITS MUST BE INSTALLED PRIOR TO THE INSTALLATION OF PAVEMENT MARKINGS.
3. THE CONTRACTOR WILL CONFIRM THE LOCATION OF ALL UTILITIES INCLUDING TRAFFIC SIGNAL INTERCONNECT CABLE PRIOR TO CONSTRUCTION. CONTACT MISS UTILITY AT LEAST 72 HOURS PRIOR TO CONSTRUCTION.
4. THE CONTRACTOR WILL MEET WITH THE MD-SHA AND MR. EMIL WOLANIN OF THE MONTGOMERY COUNTY TRAFFIC MANAGEMENT SYSTEMS PRIOR TO CONSTRUCTION.
5. D.O. DENOTES DELAYED OUTPUT LOOP DETECTOR.

UTILITY LEGEND

T	TELEPHONE CABLES
G	GAS MAIN
W	WATER MAIN
S	SEWER MAIN
E	ELECTRIC CABLES
A	AERIAL CABLES
BC	BURIED CABLE
SD	STORM DRAIN

REVISIONS	APPROVALS
⑥ Add EB Left Turn Lane, Pedestrian Push Button, and Indication. 6/95 LCT [Signature]	CHIEF, DESIGN SECTION ASST. DISTRICT ENGINEER, TRAFFIC CHIEF, TRAFFIC ENGINEERING DESIGN DIVISION DEPUTY CHIEF ENGINEER, TRAFFIC

MDOT - STATE HIGHWAY ADMINISTRATION
Office of Traffic & Safety
TRAFFIC ENGINEERING DESIGN DIVISION

DRAWN BY: J. Spence	MD 355 AT RICHARD MONTGOMERY DRIVE/DODGE STREET	LOG MILE: 15035509.13
DES. BY:	COUNTY: MONTGOMERY	
CHK. BY:		
DATE: 7-28-70	F.A.P. NO.	TS/STD. NO. 49 B
SCALE: 1"=20'	S.H.A. NO.	SHEET NO. 1 OF 2

