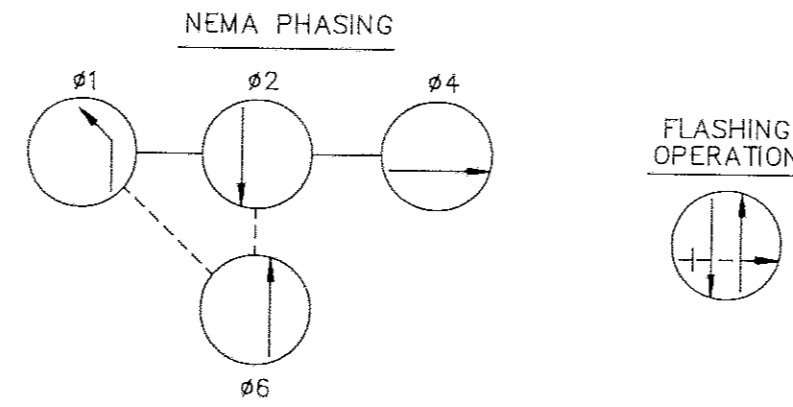
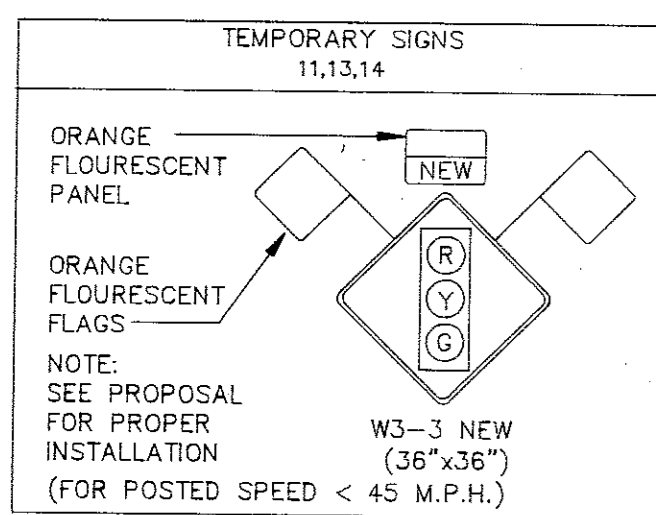
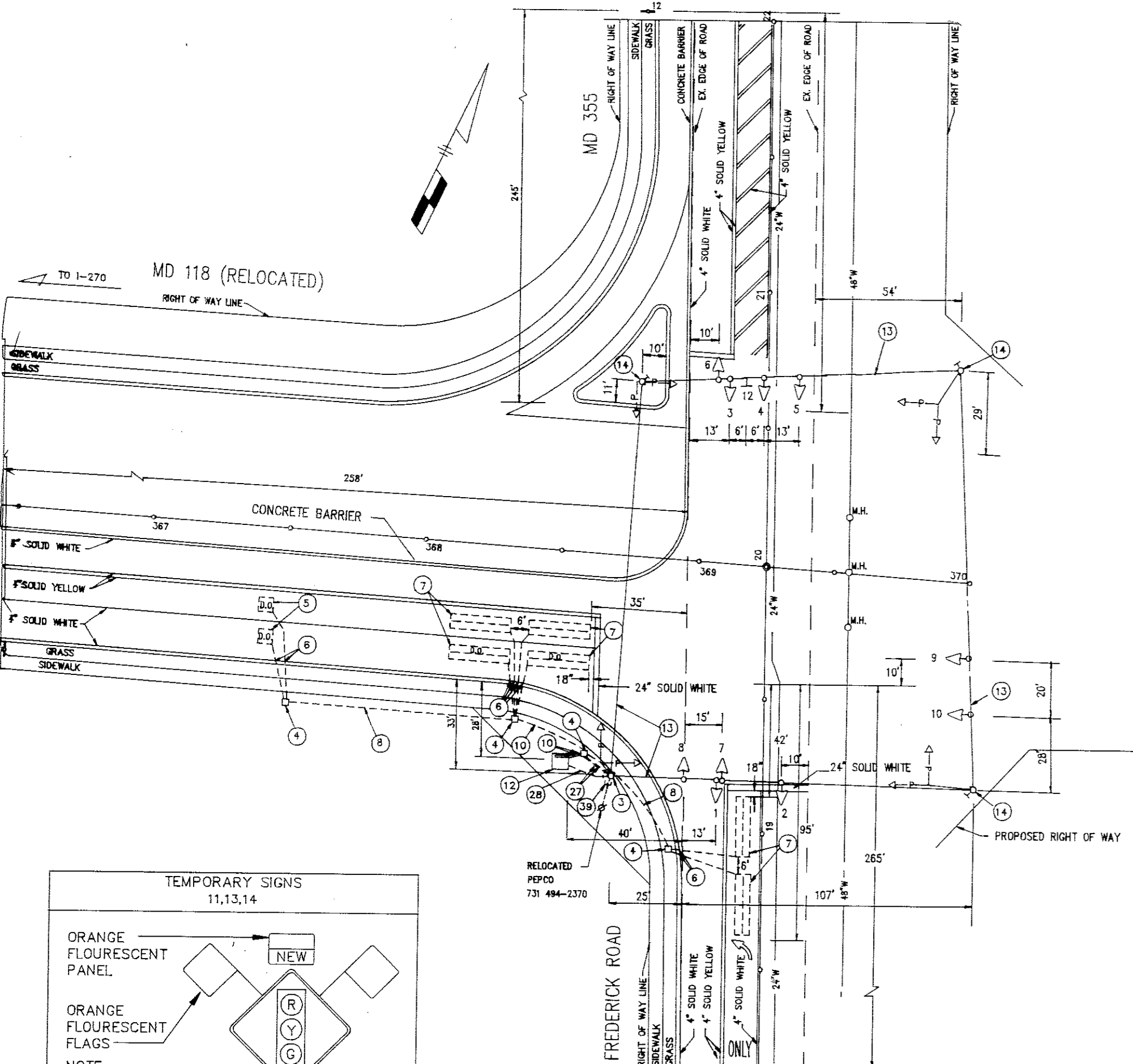


CONSTRUCTION STAGE I

SIGNALS		PED SIGNALS	SIGNS
12" (R)	12" (Y)	8" (R)	R3-SL 30"x36" ONLY
1,3 (G)	4,5,7,8,9,10 (G)	2,6 (G)	12



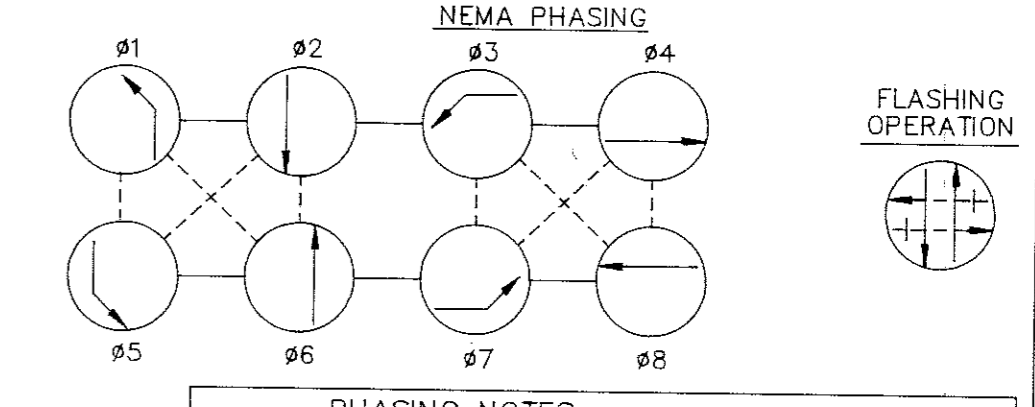
PHASING NOTES
 1. PHASES ASSOCIATED BY A DASHED LINE WILL OPERATE CONCURRENTLY
 2. PHASES ASSOCIATED BY A SOLID LINE WILL NOT OPERATE CONCURRENTLY



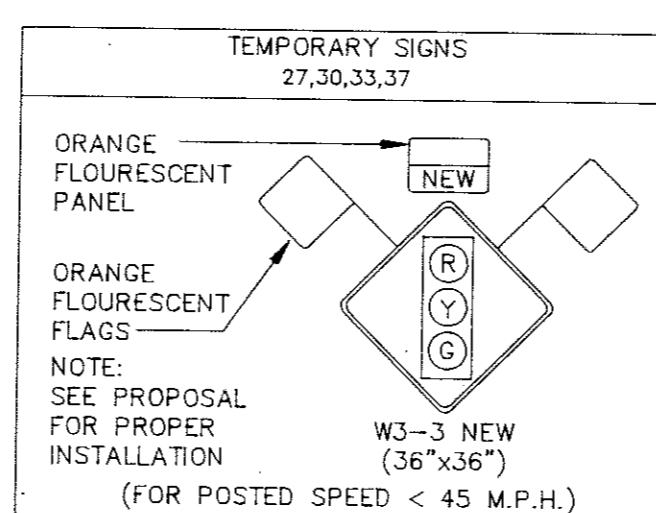
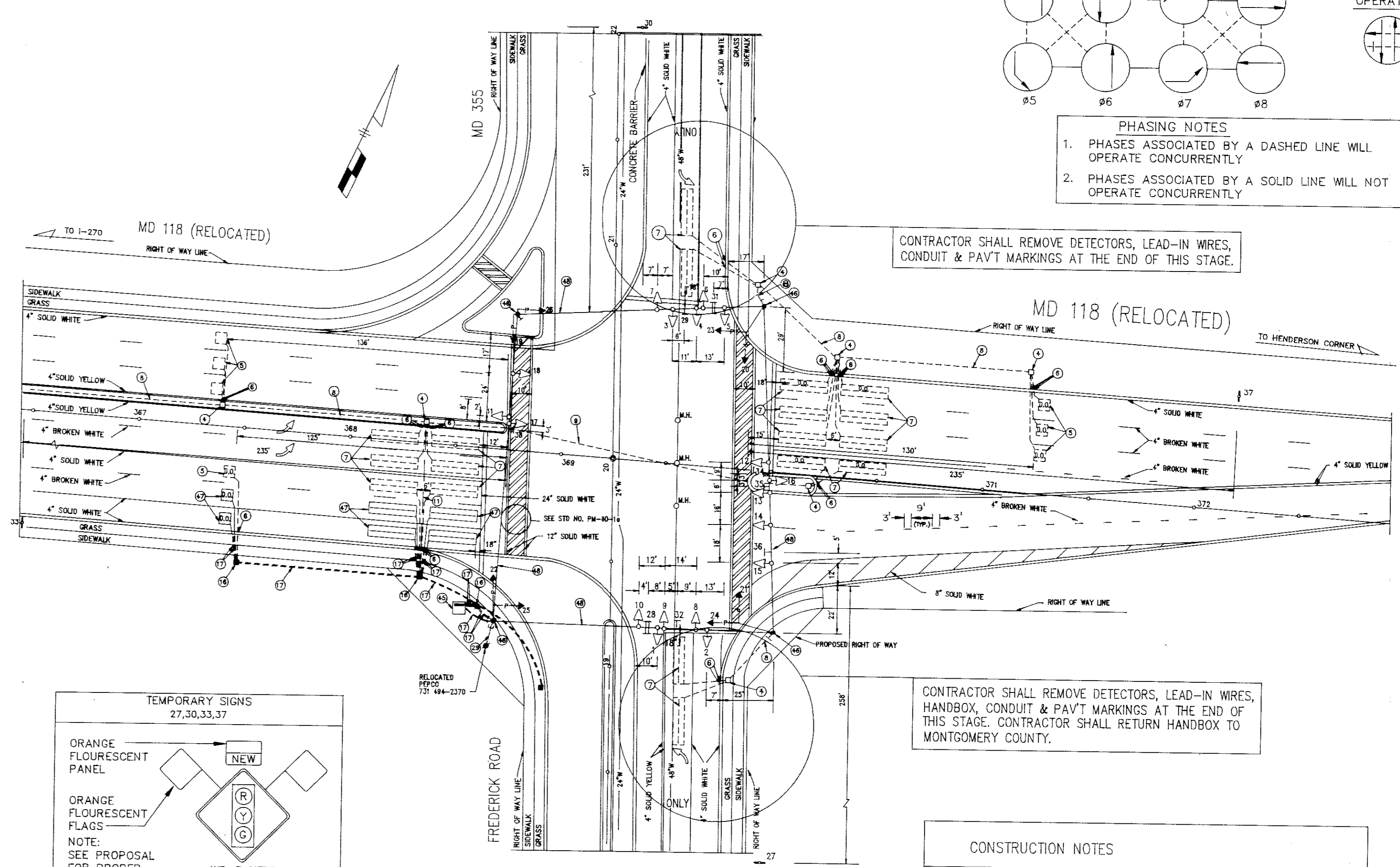
CONSTRUCTION NOTES
 1. ALL PED. SIGNAL HEADS ARE TO BE BAGGED DURING THIS STAGE OF CONSTRUCTION.
 2. ALL SPAN MOUNT SIGNAL HEADS AND SIGNS CAN EITHER BE INSTALLED AND BAGGED DURING THIS STAGE OF CONSTRUCTION OR INSTALLED DURING LATER STAGES.

CONSTRUCTION STAGE IV

SIGNALS		SIGNALS		SIGNALS	
12" (R)	12" (Y)	12" (R)	12" (Y)	8" (R)	8" (Y)
1,3,6,8 (G)	17 (G)	4,5,9,10,11,12,13,14,15,18 (G)	16 (G)	2,7 (G)	19,20,21,22,23,24,25,26 (G)

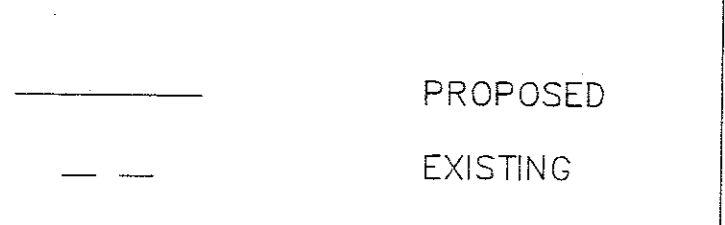


PHASING NOTES
 1. PHASES ASSOCIATED BY A DASHED LINE WILL OPERATE CONCURRENTLY
 2. PHASES ASSOCIATED BY A SOLID LINE WILL NOT OPERATE CONCURRENTLY

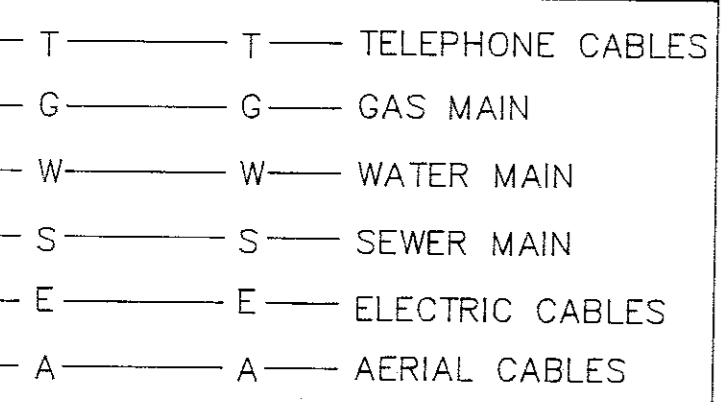


CONSTRUCTION NOTES
 1. ALL PED. SIGNAL HEADS TO BE COVERED DURING THIS STAGE OF CONSTRUCTION.
 2. AT THE END OF THIS STAGE, THE CONTRACTOR SHALL ADJUST SIGNAL EQUIPMENT AND SET UP FOR THE ULTIMATE CONDITION.

ROADWAY LEGEND



LEGEND



GENERAL NOTES

- CONTRACTOR MUST TRENCH AND INSTALL ALL CONDUITS PRIOR TO ROADWAY CONSTRUCTION UNLESS IT IS NOTED ON THE PLANS OTHERWISE.
- PAVEMENT MARKINGS AS SHOWN ON DRAWING ARE TEMPORARY AND TO BE REMOVED AFTER THIS STAGE
- "D.O." INDICATES DELAY OUTPUT LOOP DETECTOR.
- THE LOOP DETECTORS AND CONDUITS MUST BE INSTALLED PRIOR TO THE INSTALLATION OF THE PAVEMENT MARKINGS.
- CONTRACTOR MUST VERIFY LOCATION OF ALL PROPOSED GEOMETRICS PRIOR TO INSTALLING SIGNAL EQUIPMENT.
- PRIOR TO ROADWAY CONSTRUCTION, CONTRACTOR MUST REFER TO ROADWAY PLANS FOR INTERCONNECT CONDUITS AND HANDBOXES.

DANIEL CONSULTANTS, INC.
 8950 RTE. 108E, SUITE 229
 COLUMBIA, MARYLAND

REVISIONS	APPROVALS
	APPROVED <i>Dimitrios A. Zafiris</i> CHIEF, SIGNAL DESIGN SECTION ASST. DISTRICT ENGINEER, TRAFFIC APPROVED <i>James J. ...</i> CHIEF, TRAFFIC ENGINEERING DIVISION DEPUTY CHIEF ENGINEER, OFFICE OF TRAFFIC

MARYLAND DEPARTMENT OF TRANSPORTATION
 STATE HIGHWAY ADMINISTRATION - OFFICE OF TRAFFIC
 BUREAU OF TRAFFIC ENGINEERING

MD 118 (RELOCATED) & MD 355 (FREDERICK RD.)
 TEMPORARY SIGNAL PLANS FOR MOT

COUNTY MONTGOMERY

DATE: FEBRUARY 1991
 SCALE: 1" = 40'

F.A.P. NO. -
 S.H.A. NO. BW-427-802-312

DRAWN BY: R.E.S.
 DES. BY: B.H.E.
 CHK. BY: Z.A.S.

FILE NO.: TS 2475 XI
 SHEET NO. OF

F.H.W.A. REGION NO.	STATE	FED. AID PROJ. NO.	SHEET NO.	TOTAL SHEETS
3	MD	SEE TITLE SHEET		

BW-427-802-312
 BID NO. MCG 20046

F#34