

F.H.W.A. REGION NO.	STATE	FED. AID PROJ. NO.	SHEET NO.	TOTAL SHEETS
3	MD	SEE TITLE SHEET		

**SIGNS**

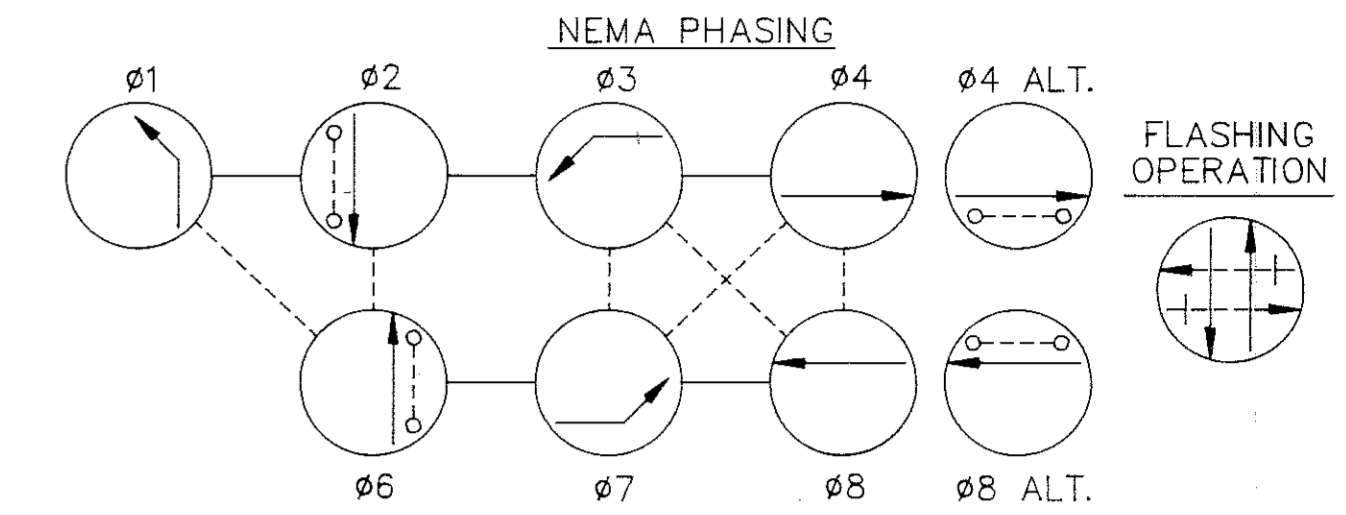
D3-2  
VAR.x16"  
20600 Germantown Rd.  
27,31 (DUAL FACED)

R3-5L  
30"x36"  
ONLY  
28,29,33,34

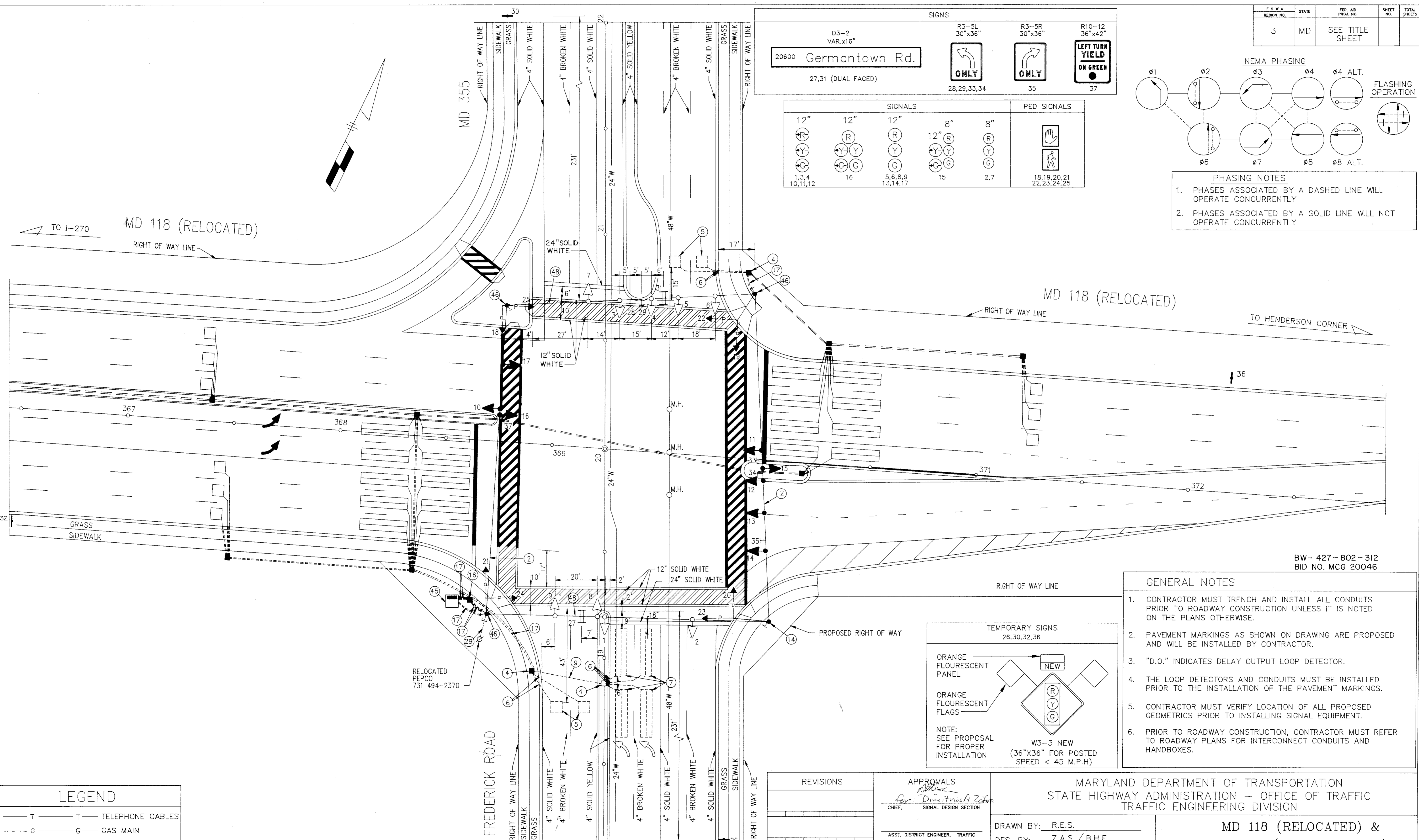
R3-5R  
30"x36"  
ONLY  
35

R10-12  
36"x42"  
LEFT TURN YIELD ON GREEN  
37

SIGNALS					PED SIGNALS	
12"	12"	12"	8"	8"		
(R)	(R)	(R)	(R)	(R)	(H)	(W)
(Y)	(Y)	(Y)	(Y)	(Y)		
(G)	(G)	(G)	(G)	(G)		
1,3,4 10,11,12	16	5,6,8,9 13,14,17	15	2,7		18,19,20,21 22,23,24,25



- PHASING NOTES**
- PHASES ASSOCIATED BY A DASHED LINE WILL OPERATE CONCURRENTLY
  - PHASES ASSOCIATED BY A SOLID LINE WILL NOT OPERATE CONCURRENTLY



BW-427-802-312  
BID NO. MCG 20046

- GENERAL NOTES**
- CONTRACTOR MUST TRENCH AND INSTALL ALL CONDUITS PRIOR TO ROADWAY CONSTRUCTION UNLESS IT IS NOTED ON THE PLANS OTHERWISE.
  - PAVEMENT MARKINGS AS SHOWN ON DRAWING ARE PROPOSED AND WILL BE INSTALLED BY CONTRACTOR.
  - "D.O." INDICATES DELAY OUTPUT LOOP DETECTOR.
  - THE LOOP DETECTORS AND CONDUITS MUST BE INSTALLED PRIOR TO THE INSTALLATION OF THE PAVEMENT MARKINGS.
  - CONTRACTOR MUST VERIFY LOCATION OF ALL PROPOSED GEOMETRICS PRIOR TO INSTALLING SIGNAL EQUIPMENT.
  - PRIOR TO ROADWAY CONSTRUCTION, CONTRACTOR MUST REFER TO ROADWAY PLANS FOR INTERCONNECT CONDUITS AND HANDBOXES.

**TEMPORARY SIGNS**  
26,30,32,36

ORANGE FLOURESCENT PANEL

ORANGE FLOURESCENT FLAGS

NOTE:  
SEE PROPOSAL FOR PROPER INSTALLATION

W3-3 NEW  
(36"x36" FOR POSTED SPEED < 45 M.P.H)

**LEGEND**

— T —	— T —	TELEPHONE CABLES
— G —	— G —	GAS MAIN
— W —	— W —	WATER MAIN
— S —	— S —	SEWER MAIN
— E —	— E —	ELECTRIC CABLES
— A —	— A —	AERIAL CABLES

DANIEL CONSULTANTS, INC.  
8950 RTE. 108E, SUITE 229  
COLUMBIA, MARYLAND

**REVISIONS**

NO.	DESCRIPTION

**APPROVALS**

Chief, SIGNAL DESIGN SECTION  
*Dimitrios A. Zefanis*

ASST. DISTRICT ENGINEER, TRAFFIC  
*James M. ...*

DEPUTY CHIEF ENGINEER, OFFICE OF TRAFFIC  
*...*

MARYLAND DEPARTMENT OF TRANSPORTATION  
STATE HIGHWAY ADMINISTRATION - OFFICE OF TRAFFIC  
TRAFFIC ENGINEERING DIVISION

DRAWN BY: R.E.S.  
DES. BY: Z.A.S./B.H.E.  
CHK. BY: Z.A.S.

DATE: FEBRUARY 1991  
SCALE: 1"=20'

F.A.P. NO. \_\_\_\_\_  
S.H.A. NO. BW-427-802-312

MD 118 (RELOCATED) &  
MD 355 (FREDERICK RD.)  
LOG # 15011807.39  
COUNTY MONTGOMERY

FILE NO.: TS 2475  
SHEET NO. \_\_\_\_\_ OF \_\_\_\_\_

F#34