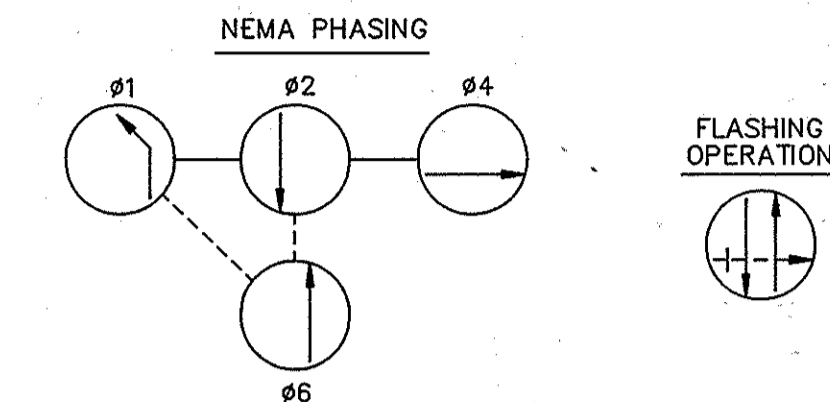
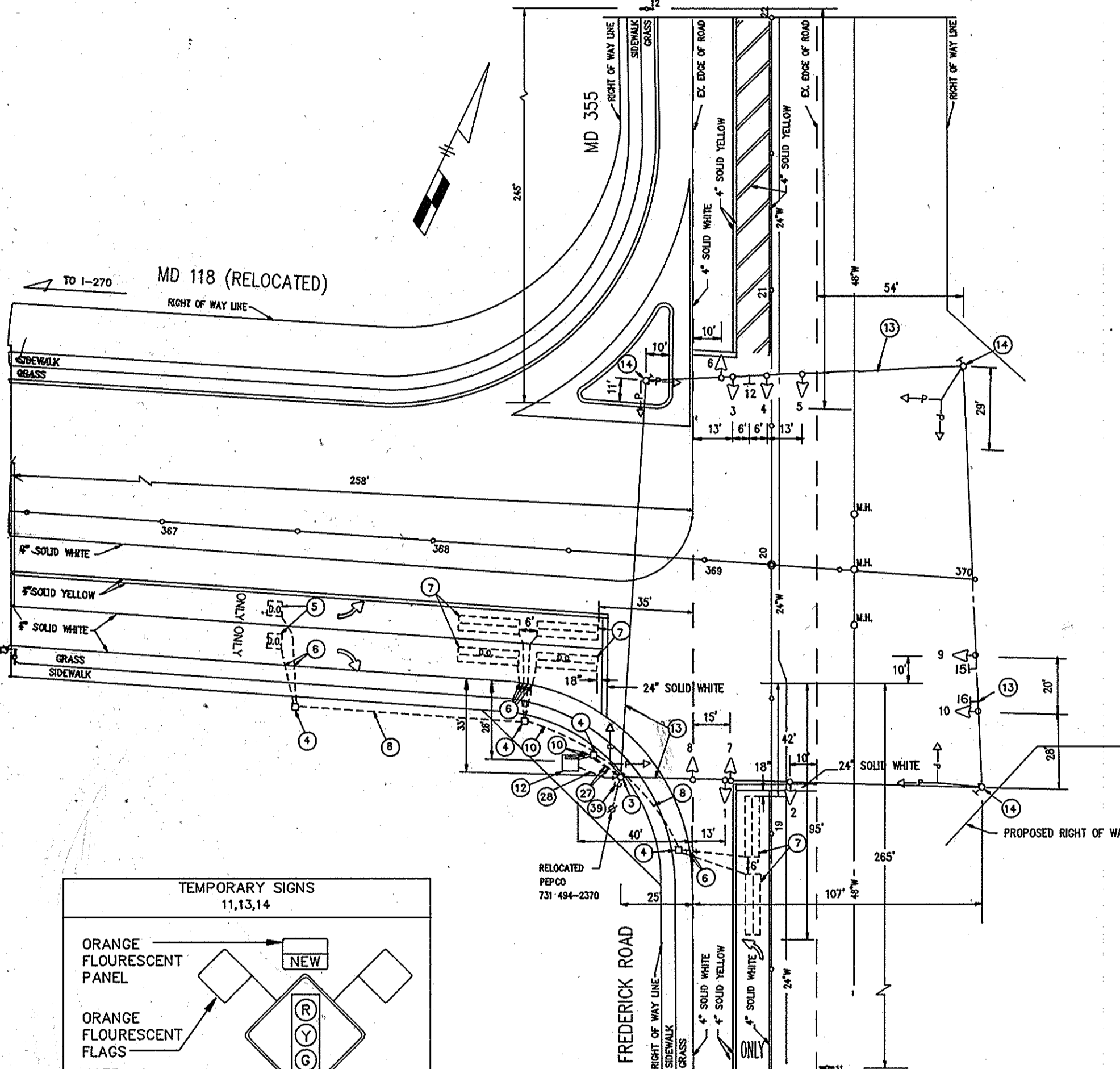
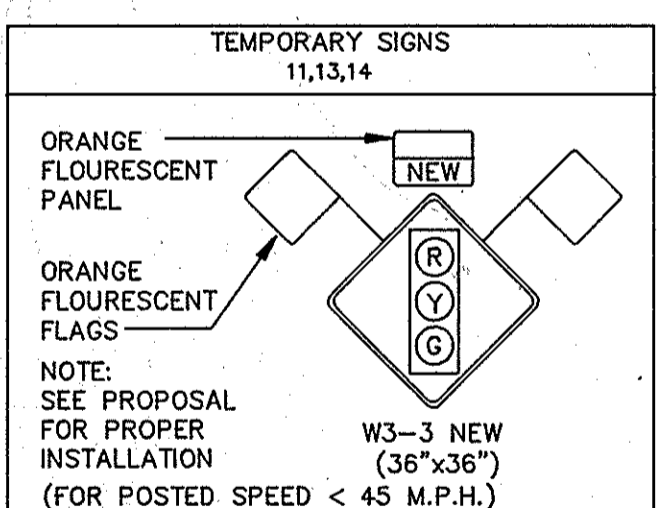


CONSTRUCTION STAGE I

| SIGNALS |                 |        | PED SIGNALS |                    | SIGNS              |  |
|---------|-----------------|--------|-------------|--------------------|--------------------|--|
| 12" (R) | 12" (Y)         | 8" (R) | BAGGED      | R3-SL 30"x36" ONLY | R3-SR 30"x36" ONLY |  |
| 1,3     | 4,5,7<br>8,9,10 | 2,6    |             | 12, 15             | 16                 |  |



**PHASING NOTES**  
 1. PHASES ASSOCIATED BY A DASHED LINE WILL OPERATE CONCURRENTLY  
 2. PHASES ASSOCIATED BY A SOLID LINE WILL NOT OPERATE CONCURRENTLY

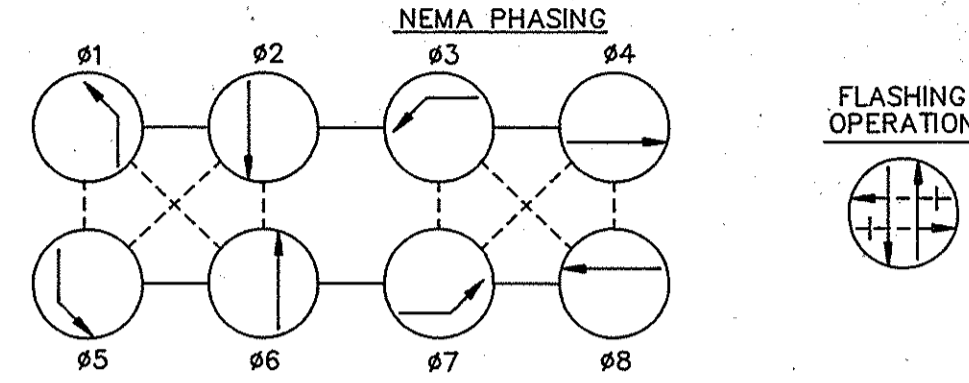
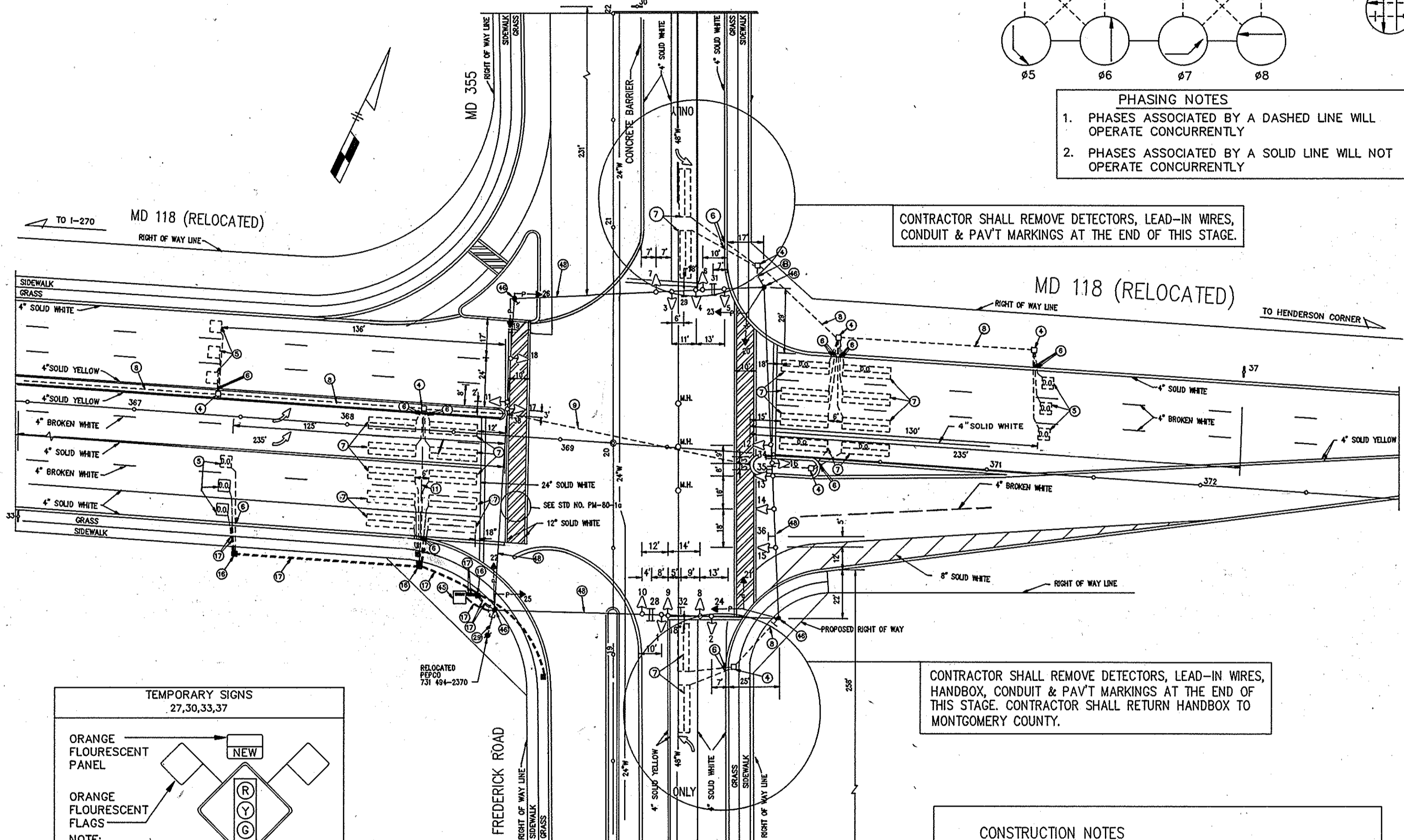


CONSTRUCTION NOTES

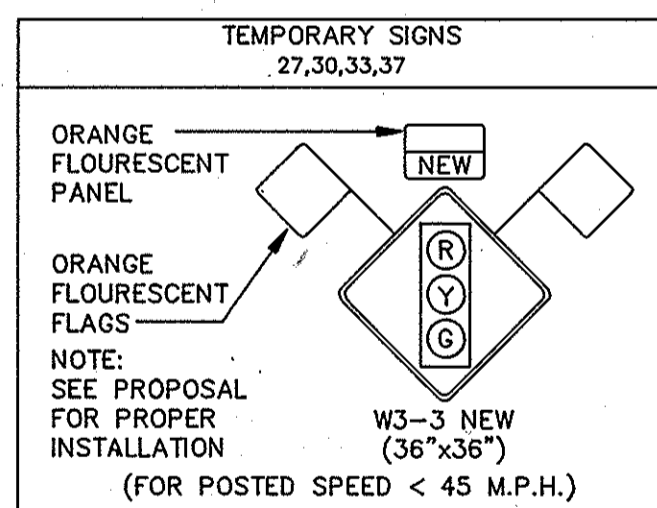
- ALL PED. SIGNAL HEADS ARE TO BE BAGGED DURING THIS STAGE OF CONSTRUCTION.
- ALL SPAN MOUNT SIGNAL HEADS AND SIGNS CAN EITHER BE INSTALLED AND BAGGED DURING THIS STAGE OF CONSTRUCTION OR INSTALLED DURING LATER STAGES.

CONSTRUCTION STAGE IV

| SIGNALS                              |                    |                    | PED SIGNALS                             |  |
|--------------------------------------|--------------------|--------------------|---|--|
| D3-2 VAR.X16" 20600 > Germantown Rd. | R3-SL 30"x36" ONLY | R3-SR 30"x36" ONLY | R10-12 36"x42" LEFT TURN YIELD ON GREEN |  |
| 28,31                                | 29,32,34,35        | 36                 | 38                                      |  |



**PHASING NOTES**  
 1. PHASES ASSOCIATED BY A DASHED LINE WILL OPERATE CONCURRENTLY  
 2. PHASES ASSOCIATED BY A SOLID LINE WILL NOT OPERATE CONCURRENTLY



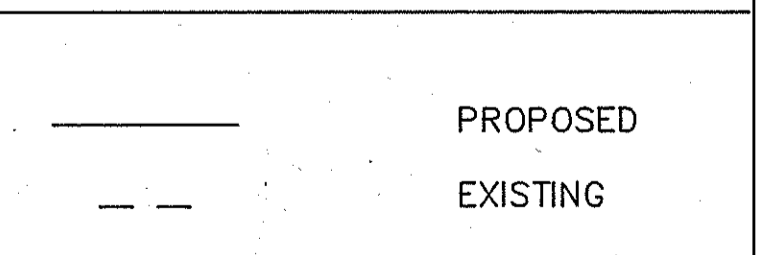
CONTRACTOR SHALL REMOVE DETECTORS, LEAD-IN WIRES, CONDUIT & PAVT MARKINGS AT THE END OF THIS STAGE.

CONSTRUCTION NOTES

- ALL PED. SIGNAL HEADS TO BE COVERED DURING THIS STAGE OF CONSTRUCTION.
- AT THE END OF THIS STAGE, THE CONTRACTOR SHALL ADJUST SIGNAL EQUIPMENT AND SET UP FOR THE ULTIMATE CONDITION.

NOTE: STAGE IV PAVEMENT MARKINGS ON RELOCATED MD. RTE. 118 SHALL BE THE PERMANENT MARKINGS AS SHOWN ABOVE ON SHEET 54 UNLESS DIRECTED OTHERWISE BY THE ENGINEER

ROADWAY LEGEND



LEGEND

- T — T — TELEPHONE CABLES
- G — G — GAS MAIN
- W — W — WATER MAIN
- S — S — SEWER MAIN
- E — E — ELECTRIC CABLES
- A — A — AERIAL CABLES

GENERAL NOTES

- CONTRACTOR MUST TRENCH AND INSTALL ALL CONDUITS PRIOR TO ROADWAY CONSTRUCTION UNLESS IT IS NOTED ON THE PLANS OTHERWISE.
- ALL TEMPORARY PAVEMENT MARKINGS SHALL BE REMOVED BY THE CONTRACTOR AS DIRECTED BY THE ENGINEER.
- "D.O." INDICATES DELAY OUTPUT LOOP DETECTOR.
- THE LOOP DETECTORS AND CONDUITS MUST BE INSTALLED PRIOR TO THE INSTALLATION OF THE PAVEMENT MARKINGS.
- CONTRACTOR MUST VERIFY LOCATION OF ALL PROPOSED GEOMETRICS PRIOR TO INSTALLING SIGNAL EQUIPMENT.
- PRIOR TO ROADWAY CONSTRUCTION, CONTRACTOR MUST REFER TO ROADWAY PLANS FOR INTERCONNECT CONDUITS AND HANDBOXES.

DANIEL CONSULTANTS, INC.  
 8950 RTE. 108E, SUITE 229  
 COLUMBIA, MARYLAND

| REVISIONS | APPROVALS   |
|-----------|---|
|           | APPROVED: <i>[Signature]</i><br>For: <i>[Signature]</i> A. Zafiris<br>CHIEF, SIGNAL DESIGN SECTION<br>ASST. DISTRICT ENGINEER, TRAFFIC<br>APPROVED: <i>[Signature]</i><br>CHIEF, TRAFFIC ENGINEERING DIVISION<br>APPROVED: <i>[Signature]</i><br>DEPUTY CHIEF ENGINEER, OFFICE OF TRAFFIC |

MARYLAND DEPARTMENT OF TRANSPORTATION  
 STATE HIGHWAY ADMINISTRATION — OFFICE OF TRAFFIC  
 BUREAU OF TRAFFIC ENGINEERING

MD 118 (RELOCATED) & MD 355 (FREDERICK RD.)  
 TEMPORARY SIGNAL PLANS FOR MOT  
 COUNTY — MONTGOMERY

DRAWN BY: R.E.S.  
 DES. BY: B.H.E.  
 CHK. BY: Z.A.S.

DATE: FEBRUARY 1991 F.A.P. NO. —  
 SCALE: 1" = 40' S.H.A. NO. M-969-451-371

FILE NO.: TS 2475 XI  
 SHEET NO. 48 OF 95

| F.H.W.A. REGION NO. | STATE | FED. AID PROJ. NO. | SHEET NO. | TOTAL SHEETS |
|---------------------|-------|--------------------|-----------|--------------|
| 3                   | MD    |                    |           |              |