

WIRING DIAGRAM

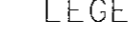




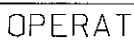
SEQUENCE OF OPERATION SHEET

MD 355
RUNS IN AN
NORTH-SOUTH
DIRECTION

TRAFFIC OPERATIONS SECTION
DIVISION OF TRAFFIC ENGINEERING
MONTGOMERY COUNTY, MARYLAND

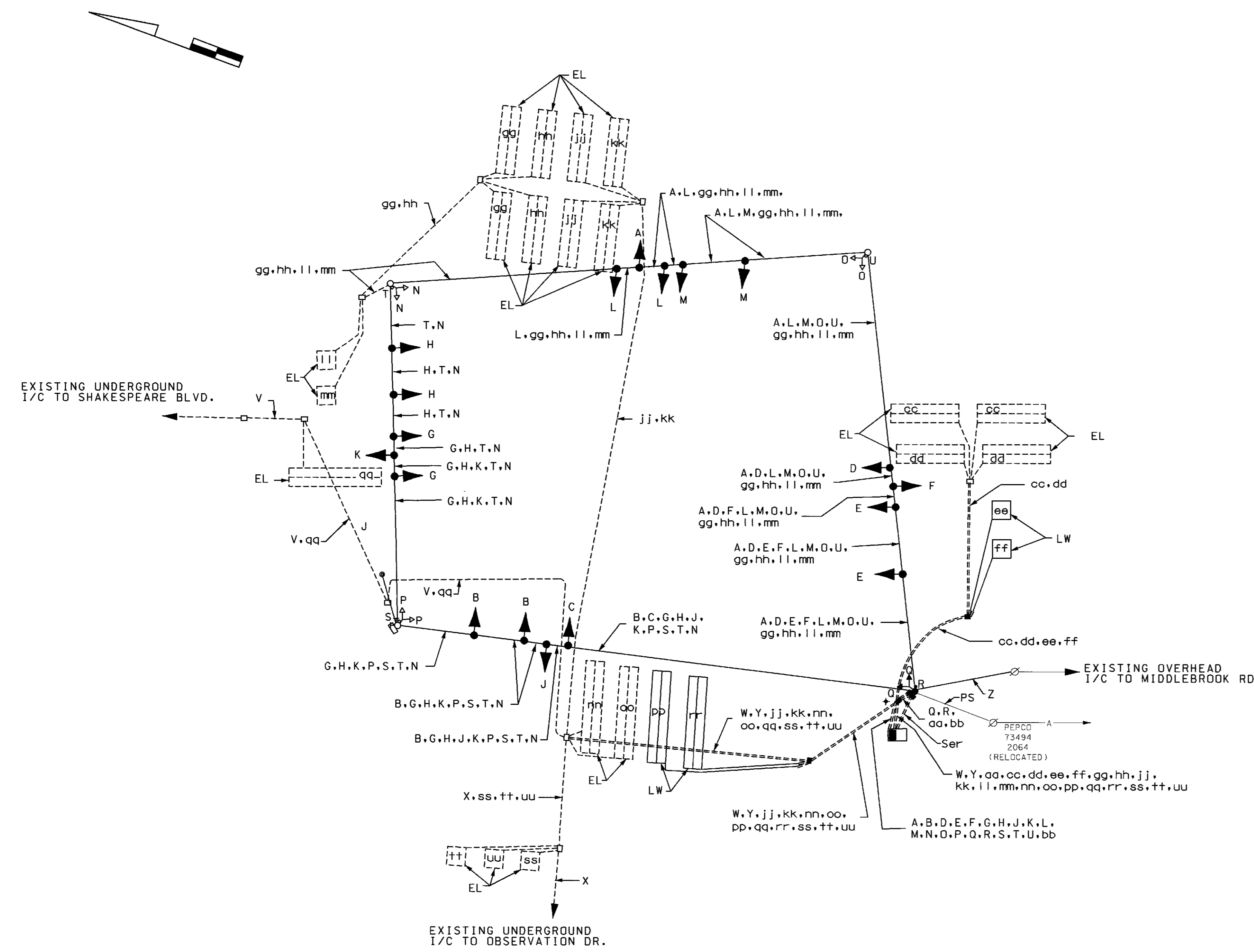
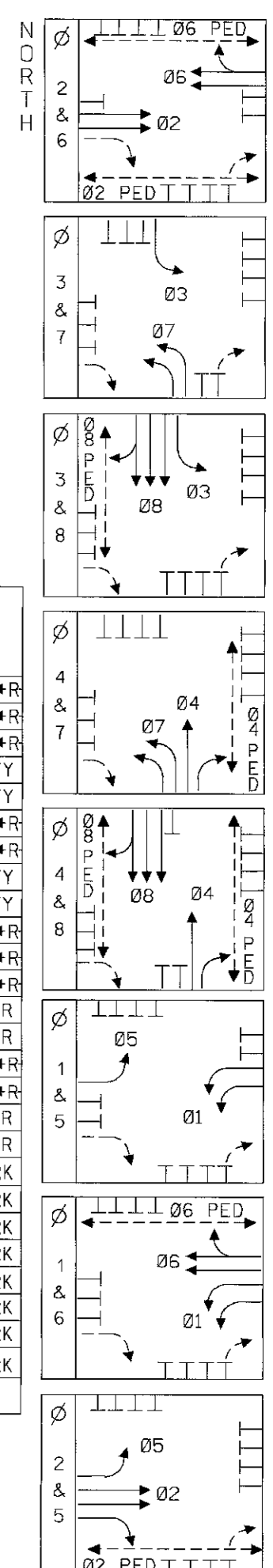
NO. _____
PHASING

INTERSECTION: MD 355 AT MD 118

SIGNAL NO.	SIGNAL HEAD INDICATIONS			
	1, 2, 3, 6, 7, 10, 11, 12, 15, 16	4, 5, 8, 9, 13, 14, 17, 18		19-26
TOTAL:	10	8		8
LEGEND	 R RED Y YELLOW G GREEN ← ARROW F FLASHING	R Y G	   	9" or 12" 

SEQUENCE OF OPERATION

SIGNAL NO.	INTERVAL																										
	1	2	3	4	5	6	7	8	9	10	11	12	13	14	15	16	17	18	19	20	21	22	23	24	25	26	27
1	←R	←R	←R	←R	←R	←R	←R	←R	←R	←R	←R	←R	←R	←R	←R	←R	←R	←R	←R	←G	←Y	←R	←R	←R	←R	←R	←R
2	←R	←R	←R	←R	←R	←R	←R	←R	←R	←R	←R	←R	←R	←R	←R	←R	←R	←R	←R	←G	←Y	←R	←R	←R	←R	←R	←R
3	←R	←R	←R	←R	←R	←R	←R	←R	←R	←R	←R	←R	←R	←R	←R	←R	←R	←R	←R	←G	←Y	←R	←R	←R	←R	←R	←R
4	G	Y	R	R	R	R	R	R	R	R	R	R	R	R	R	R	R	R	R	G	G	R	R	R	R	R	R
5	G	Y	R	R	R	R	R	R	R	R	R	R	R	R	R	R	R	R	R	G	G	R	R	R	R	R	R
6	←R	←R	←R	←R	←R	←R	←R	←R	←R	←R	←R	←R	←R	←R	←R	←R	←R	←R	←R	←G	←Y	←R	←R	←R	←R	←R	←R
7	←R	←R	←R	←R	←R	←R	←R	←R	←R	←R	←R	←R	←R	←R	←R	←R	←R	←R	←R	←G	←Y	←R	←R	←R	←R	←R	←R
8	G	Y	R	R	R	R	R	R	R	R	R	R	R	R	R	R	R	R	R	G	G	R	R	R	R	R	R
9	G	Y	R	R	R	R	R	R	R	R	R	R	R	R	R	R	R	R	R	G	G	R	R	R	R	R	R
10	←R	←R	←R	←R	←R	←R	←R	←R	←R	←R	←R	←R	←R	←R	←R	←R	←R	←R	←R	←G	←Y	←R	←R	←R	←R	←R	←R
11	←R	←R	←R	←R	←R	←R	←R	←R	←R	←R	←R	←R	←R	←R	←R	←R	←R	←R	←R	←G	←Y	←R	←R	←R	←R	←R	←R
12	←R	←R	←R	←R	←R	←R	←R	←R	←R	←R	←R	←R	←R	←R	←R	←R	←R	←R	←R	←G	←Y	←R	←R	←R	←R	←R	←R
13	R	R	R	R	R	R	R	R	R	G	G	G	G	G	Y	R	R	R	R	R	R	R	R	R	R	R	R
14	R	R	R	R	R	R	R	R	R	G	G	G	G	G	Y	R	R	R	R	R	R	R	R	R	R	R	R
15	←R	←R	←R	←R	←R	←R	←R	←R	←R	←G	←Y	←R	←R	←R	←R	←R	←R	←R	←R	←R	←R	←R	←R	←R	←R	←R	←R
16	←R	←R	←R	←R	←R	←R	←R	←R	←R	←G	←Y	←R	←R	←R	←R	←R	←R	←R	←R	←R	←R	←R	←R	←R	←R	←R	←R
17	R	R	R	R	R	R	R	G	G	G	R	R	R	G	G	Y	R	R	R	R	R	R	R	R	R	R	R
18	R	R	R	R	R	R	R	G	G	G	R	R	R	G	G	Y	R	R	R	R	R	R	R	R	R	R	R
19	WK	FL	DW	DW	DW	DW	DW	DW	DW	DW	DW	DW	DW	DW	DW	DW	DW	DW	DW	DW	DW	DW	DW	DW	DW	DW	DW
20	WK	FL	DW	DW	DW	DW	DW	DW	DW	DW	DW	DW	DW	DW	DW	DW	DW	DW	DW	DW	DW	WK	WK	WK	DW	DW	DW
21	WK	FL	DW	DW	DW	DW	DW	DW	DW	DW	DW	DW	DW	DW	DW	DW	DW	DW	DW	DW	DW	WK	WK	WK	DW	DW	DW
22	WK	FL	DW	DW	DW	DW	DW	DW	DW	DW	DW	DW	DW	DW	DW	DW	DW	DW	DW	DW	DW	WK	WK	WK	DW	DW	DW
23	DW	DW	DW	DW	DW	DW	DW	DW	DW	DW	DW	DW	DW	DW	DW	DW	DW	DW	DW	DW	DW	DW	DW	DW	DW	DW	DW
24	DW	DW	DW	DW	DW	DW	DW	DW	DW	DW	DW	DW	DW	DW	DW	DW	DW	DW	DW	DW	DW	DW	DW	DW	DW	DW	DW
25	DW	DW	DW	DW	DW	DW	DW	DW	DW	DW	DW	DW	DW	DW	DW	DW	DW	DW	DW	DW	DW	DW	DW	DW	DW	DW	DW
26	DW	DW	DW	DW	DW	DW	DW	DW	DW	DW	DW	DW	DW	DW	DW	DW	DW	DW	DW	DW	DW	DW	DW	DW	DW	DW	DW



WIRING KEY

A } 7-CONDUCTOR ELECTRICAL CABLE (NO. 14 A.W.G.)	Z - REROUTED 12-PAIR VOICE GRADE INTERCONNECT CABLE (SELF SUPPORTING)
B } 5-CONDUCTOR ELECTRICAL CABLE (NO. 14 A.W.G.)	aa - 12-PAIR VOICE GRADE INTERCONNECT CABLE (JELLY FILLED)
C } 2-CONDUCTOR ELECTRICAL CABLE (NO. 14 A.W.G.)	bb - STRANDED BARE COPPER GROUND WIRE (NO. 6 A.W.G.)
V - EXISTING 50-PAIR VOICE GRADE INTERCONNECT CABLE (JELLY FILLED)	cc } mm dd } nn ee } oo ff } pp gg } qq hh } rr ii } ss jj } tt kk } uu ll } uu
W - REROUTED 50-PAIR VOICE GRADE INTERCONNECT CABLE (JELLY FILLED)	* - TO BE REROUTED BY MONTGOMERY COUNTY FORCES
X - EXISTING 12-PAIR VOICE GRADE INTERCONNECT CABLE (JELLY FILLED)	EL - LOOP WIRE (NO. 14 A.W.G.) EXISTING
Y - REROUTED 12-PAIR VOICE GRADE INTERCONNECT CABLE (JELLY FILLED)	LW - LOOP WIRE (NO. 14 A.W.G.)
	PS - PROPOSED OVERHEAD SERVICE TO BE INSTALLED BY PEPCO
	Ser - 3-1 CONDUCTOR ELECTRICAL CABLE (NO. 4 A.W.G.)
	+ - GROUND ROD

NOTES:

SUBMITTED: _____ CHECKED: _____ APPROVED: _____
 IN SERVICE BY: _____ DATE: _____ TIME: _____



MARYLAND DOT - STATE HIGHWAY ADMINISTRATION
 Office of Traffic & Safety
TRAFFIC ENGINEERING DESIGN DIVISION

MD 118 (GERMANTOWN RD) AND
 MD 355 (FREDERICK RD)

DRAWN BY: R.C.	F.A.P. NO. 2475A	TS. NO. 2475A	SHEET NO. 2 OF 3
CHECKED BY: R. Z.	S.H.A. NO. BW-427-802-312	T.I.M.S. NO. 6546	
SCALE: NONE	COUNTY: MONTGOMERY	LOG MILE: 15011807.39	
DATE: 7-16-04			