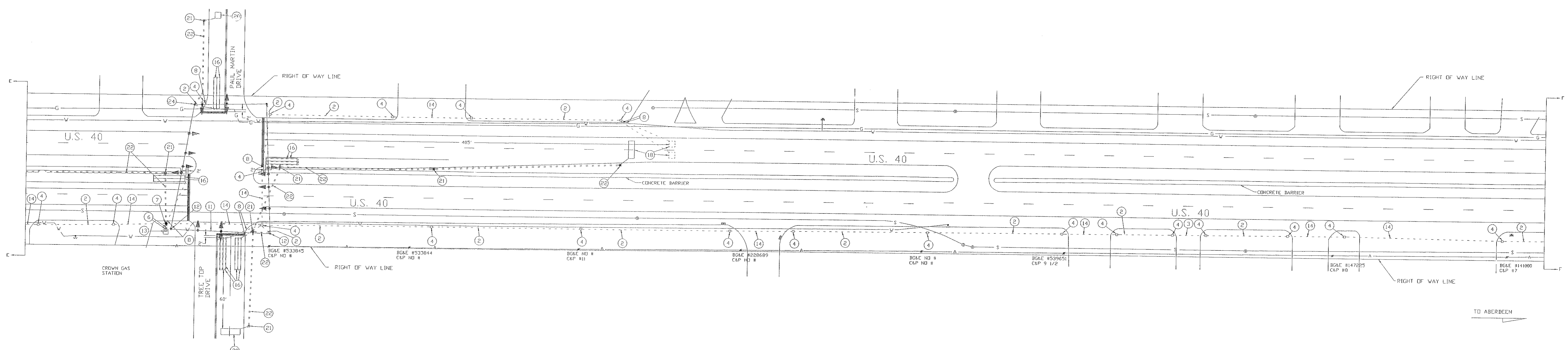
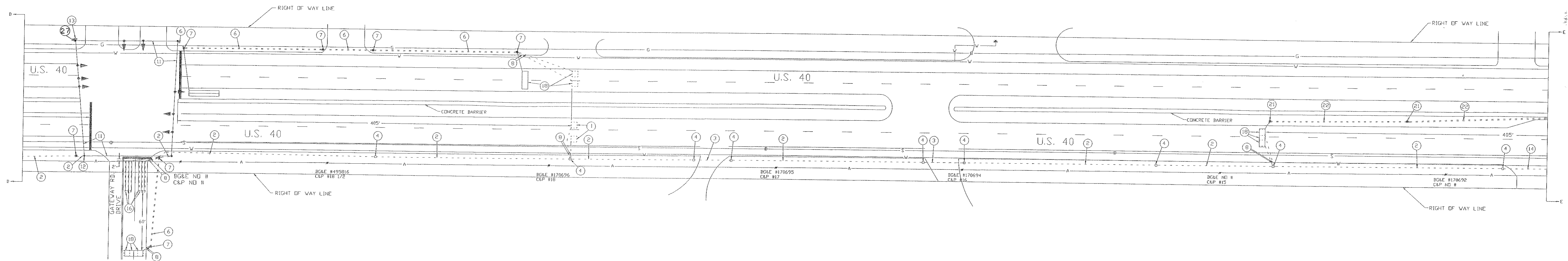


F H WA REGION NO	STATE	FED. AID PROJ. NO	SHEET NO.	TOTAL SHEETS
3	MD.	CMG-125-1(15)E	10	12



UTILITY LEGEND

— G —	GAS MAIN
— V —	WATER MAIN
— S —	SEWER MAIN
— E —	ELECTRIC CABLES
— A —	AERIAL CABLES
— T —	TELEPHONE CABLES

REVISIONS	APPROVALS	MDOT - STATE HIGHWAY ADMINISTRATION	
	<p><i>[Signature]</i> CHIEF, SIGNAL DESIGN SECTION</p> <p>ASST. DISTRICT ENGINEER, TRAFFIC</p> <p><i>[Signature]</i> CHIEF, TRAFFIC ENGINEERING DESIGN DIVISION</p> <p><i>[Signature]</i> 8/31/92 DIRECTOR, OFFICE OF TRAFFIC & SAFETY</p>	<p>Office of Traffic & Safety</p> <p>TRAFFIC ENGINEERING DESIGN DIVISION SIGNAL # 1200400.12</p>	
		DRAWN BY: <i>W. Malcolm</i>	U.S. 40 (PULASKI HIGHWAY) FROM MD. 152 TO MD. 755
		DES. BY: <i>W. Malcolm</i>	COUNTY: HARFORD
		CHK. BY: <i>[Signature]</i>	SHEET NO. 10 OF 12
		DATE: 08/92	TS/STD. NO. TS-3252 X1
		SCALE: 1" = 50'	F.A.P. NO. H-933-501-485

1200400.12

F#27