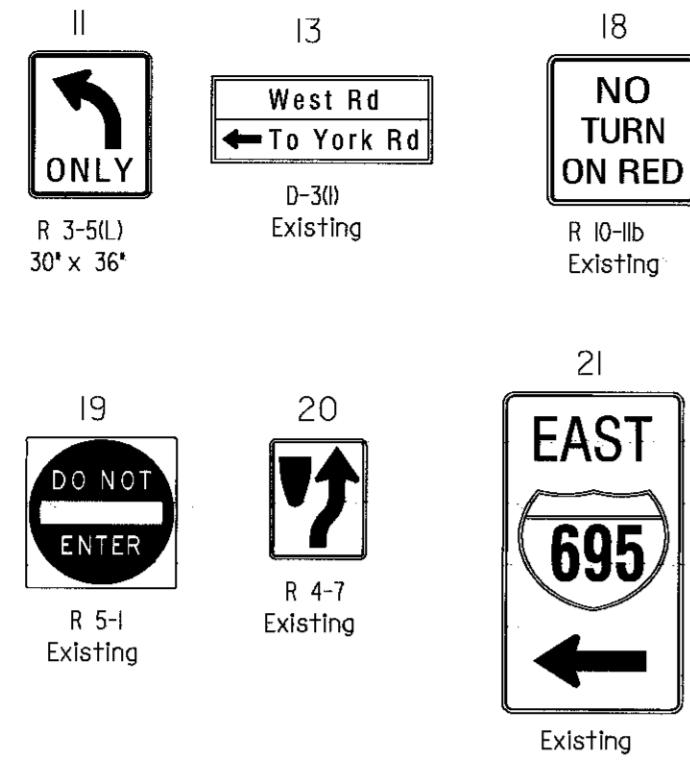
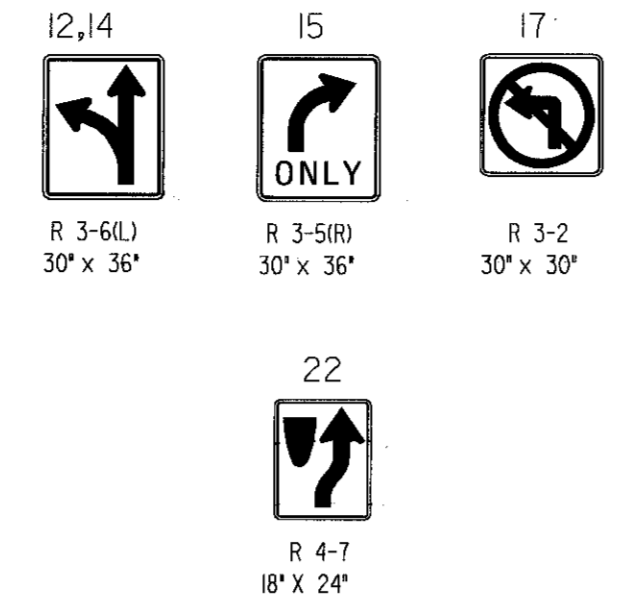


I-695 Inner Loop Ramp is considered to run in a North/South direction.

EXISTING SIGNS



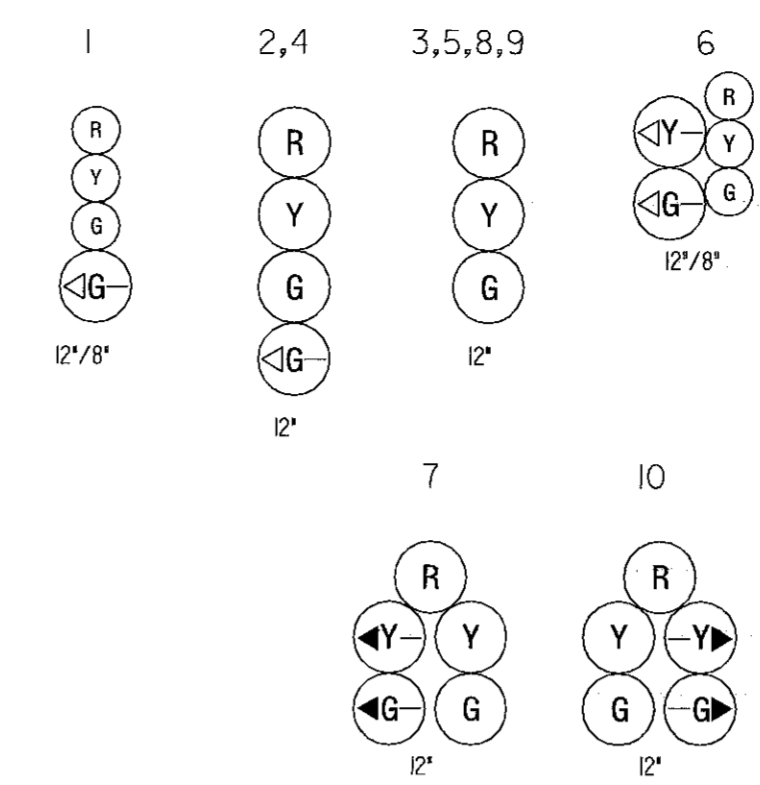
PROPOSED SIGNS



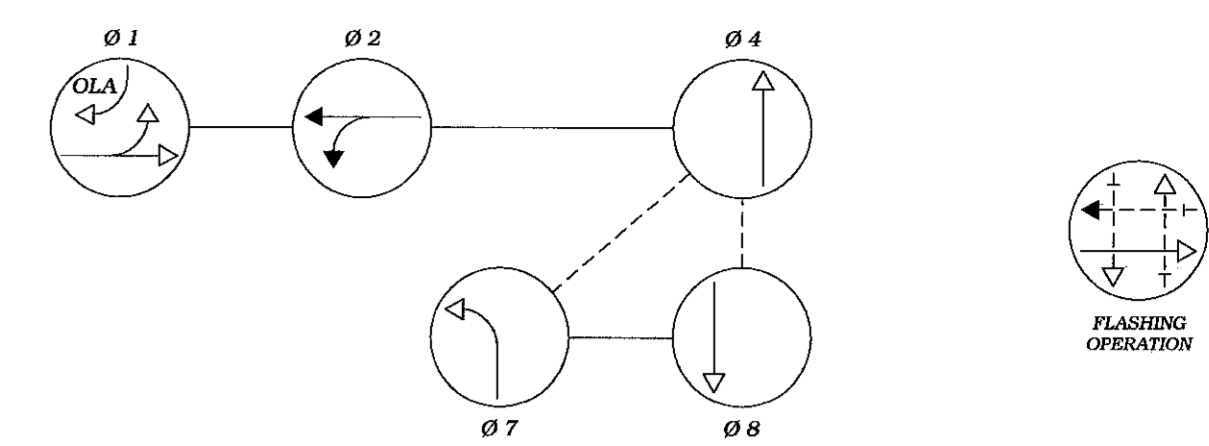
RELOCATED SIGN



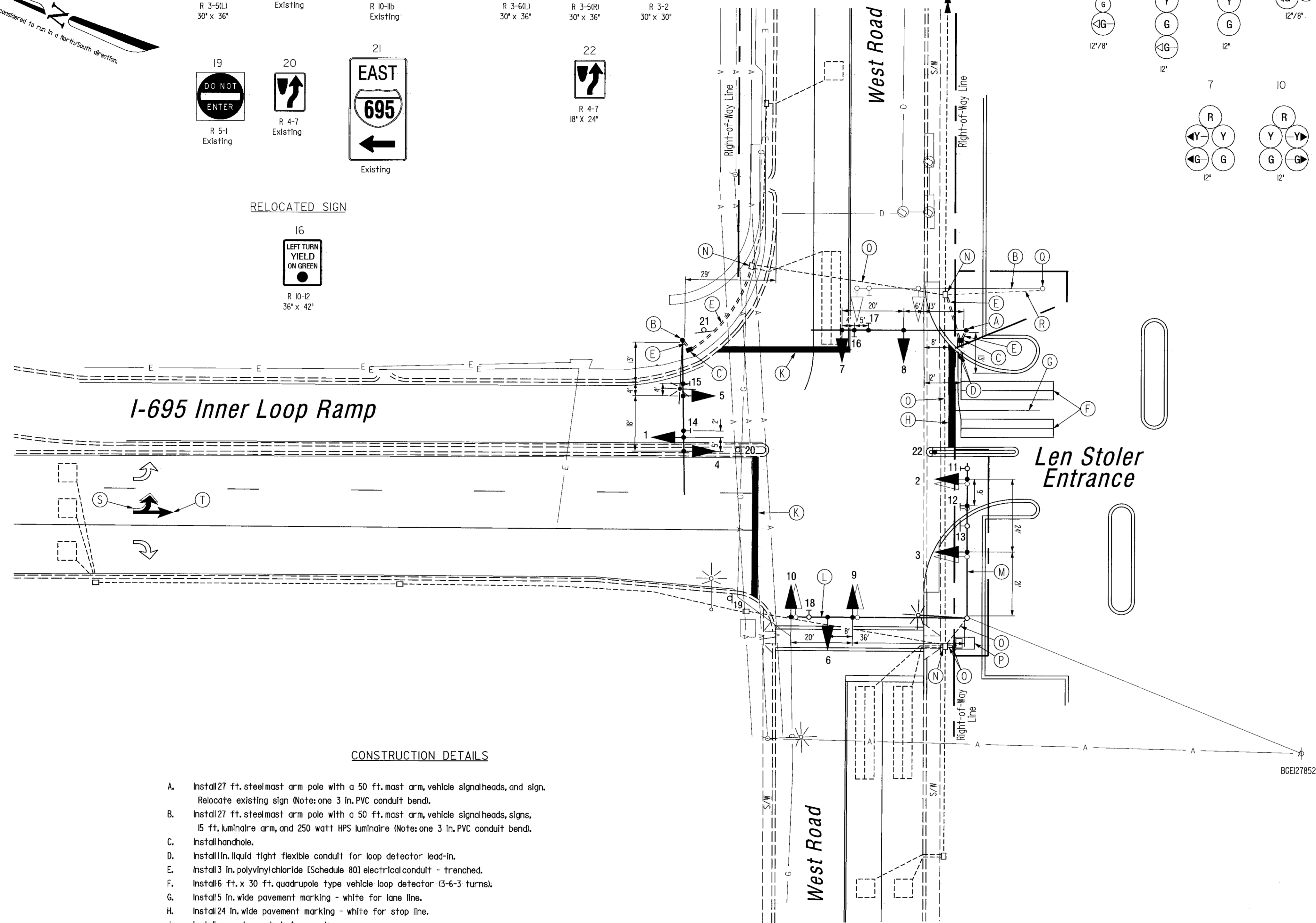
PROPOSED SIGNALS



PROPOSED NEMA PHASING



NEMA notes:
Phases associated by a dashed line will operate concurrently.
Phases associated by a solid line will not operate concurrently.



CONSTRUCTION DETAILS

- A. Install 27 ft. steel mast arm pole with a 50 ft. mast arm, vehicle signalheads, and sign. Relocate existing sign (Note: one 3 in. PVC conduit bend).
- B. Install 27 ft. steel mast arm pole with a 50 ft. mast arm, vehicle signalheads, signs, 15 ft. luminaire arm, and 250 watt HPS luminaire (Note: one 3 in. PVC conduit bend).
- C. Install handhole.
- D. Install 1 in. liquid tight flexible conduit for loop detector lead-in.
- E. Install 3 in. polyvinyl chloride (Schedule 80) electrical conduit - trenched.
- F. Install 6 ft. x 30 ft. quadrupole type vehicle loop detector (3-6-3 turns).
- G. Install 5 in. wide pavement marking - white for lane line.
- H. Install 24 in. wide pavement marking - white for stop line.
- J. Install ground mounted sign as shown.
- K. Replace existing stop bar with 24 in. wide pavement marking - white for stop line.
- L. Use existing mast arm. Install new nearside vehicle signalhead. Replace existing signalheads with black face signalheads.
- M. Use existing mast arm. Replace existing signalheads with black face signalheads. Replace existing sign as shown.
- N. Use existing handhole.
- O. Use existing conduit.
- P. Use existing cabinet and controller. Controller shall be modified for new phasing.
- Q. Remove existing signal pole and all attached equipment.
- R. Cap and abandon existing conduit.
- S. Remove existing pavement marking symbols by grinding.
- T. Install pavement marking symbol.

GEOMETRIC LEGEND	
— — — — —	EXISTING GEOMETRICS
— — — — —	PROPOSED GEOMETRICS
UTILITY LEGEND	
— G — G —	GAS MAIN
— W — W —	WATER MAIN
— S — S —	SEWER MAIN
— E — E —	ELECTRIC CABLES
— D — D —	STORM DRAIN
— A — A —	AERIAL CABLES
— T — T —	TELEPHONE CABLES

NOTES

1. Geometrics shall be confirmed prior to the installation of signal equipment. All traffic signal foundations shall be installed at final sidewalk or curb grade for closed sections, highest roadway profile grade for open sections to meet clearances as specified in MD 816.03, MD 818.01, MD 818.02, MD 818.04. The contractor shall verify ultimate grades prior to the installation of all signal equipment.
2. Loop detectors and conduits shall be installed prior to the installation of pavement markings.
3. Pavement markings detailed are proposed and are to be installed by the Contractor in accordance with MD-SHA standards. All other pavement markings will either be installed as part of the Developer's project or are to be considered as existing.
4. Revision 'B' is a revision to the traffic signal bulb in October, 94.
5. All underground and overhead utilities shown on these plans are schematic and are not to be considered complete. The Contractor shall be responsible for notifying all utility companies prior to construction so that all utilities may be located in the field. If the Contractor perceives that a conflict between the utilities and the traffic signal equipment will occur, the Contractor shall notify the appropriate Project Engineer immediately.

<p>The Traffic Group, Inc. 410-931-6600 Fax 410-931-6601</p>	<p>Revision 'B'</p>	<p>REVISIONS</p>	<p>APPROVALS</p>	<p>MARYLAND DOT - STATE HIGHWAY ADMINISTRATION Office of Traffic & Safety TRAFFIC ENGINEERING DESIGN DIVISION (Traffic Signal Plan) I-695 Inner Loop Ramp/ Len Stoler Entrance at West Road</p>
	<p>Signal reconstruction due to geometric improvements. Plan by Johnson, Mirmiran & Thompson, P.A.</p>	<p>October, 1994</p>	<p>TEAM LEADER, TRAFFIC ENGINEERING DESIGN DIVISION</p>	<p>ASST. CHIEF TRAFFIC ENGINEERING DESIGN DIVISION</p>
<p>April 26, 2004 Add Len Stoler entrance, modify phasing.</p>	<p>JES</p>	<p>CHIEF, TRAFFIC ENGINEERING DESIGN DIVISION</p>	<p>DIRECTOR, TRAFFIC & SAFETY</p>	<p>F.A.P. NO. N/A S.H.A. NO. COUNTY: Baltimore LOG MILE: 03A04500.11</p>
<p>TS NO. TS-1450B SHEET NO. 1 OF 2</p>	<p>T.I.M.S. NO. C465</p>	<p>DATE:</p>	<p>DATE:</p>	<p>DATE:</p>

F:\2004\2004-0255\484.mpl\plan\2004_5/1/2004