

TEMPORARY TRAFFIC CONTROL TYPICAL APPLICATION

STEP 7 - TEMPORARY TRAFFIC CONTROL ACTIVITIES

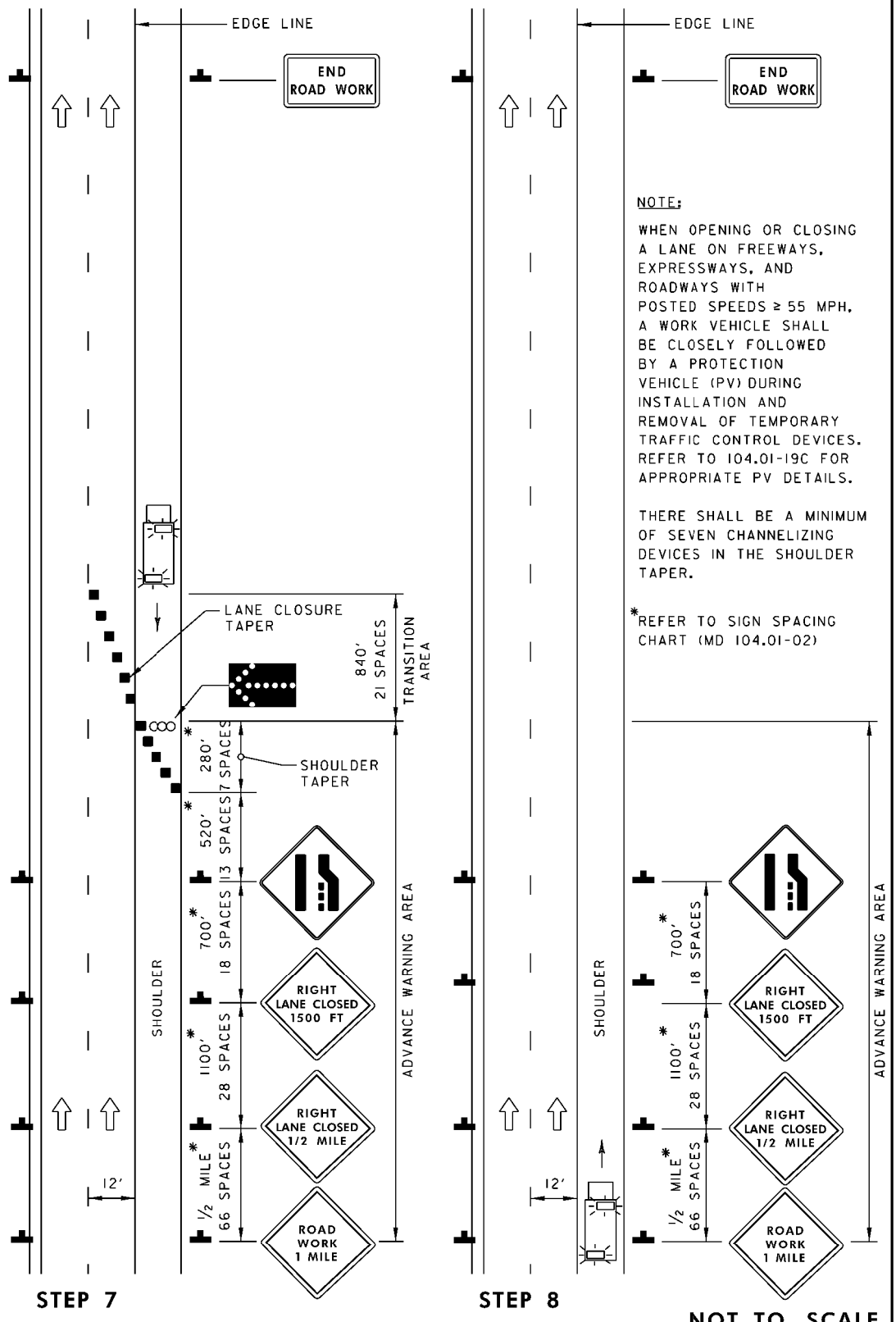
1. PLACE REMOVAL VEHICLE ON SHOULDER AND REMOVE CHANNELIZING DEVICES FROM LANE CLOSURE TAPER BY HAND ONTO BACKING VEHICLE
2. REMOVE ARROW PANEL AFTER ENSURING ROADWAY IS CLEAR
3. REMOVE CHANNELIZING DEVICES FROM SHOULDER TAPER

STEP 8 - TEMPORARY TRAFFIC CONTROL ACTIVITIES

1. REMOVE ADVANCE WARNING SIGNS MOVING WITH THE FLOW OF TRAFFIC
2. REMOVE "END ROAD WORK" SIGN MOVING WITH THE FLOW OF TRAFFIC
3. PREFERABLY, TWO WORKERS WALK BACK AND TURN SIGNS AWAY FROM TRAFFIC UNTIL VEHICLE PICKS UP SIGNS.

KEY:

- CHANNELIZING DEVICES
- SIGN SUPPORT
- FACE OF SIGN
- DIRECTION OF TRAFFIC
- ARROW PANEL
- WORK VEHICLE
- APPROVED VEHICLE SAFETY LIGHT



NOTE:

WHEN OPENING OR CLOSING A LANE ON FREEWAYS, EXPRESSWAYS, AND ROADWAYS WITH POSTED SPEEDS ≥ 55 MPH, A WORK VEHICLE SHALL BE CLOSELY FOLLOWED BY A PROTECTION VEHICLE (PV) DURING INSTALLATION AND REMOVAL OF TEMPORARY TRAFFIC CONTROL DEVICES. REFER TO 104.01-19C FOR APPROPRIATE PV DETAILS.

THERE SHALL BE A MINIMUM OF SEVEN CHANNELIZING DEVICES IN THE SHOULDER TAPER.

*REFER TO SIGN SPACING CHART (MD 104.01-02)

SPECIFICATION	CATEGORY CODE ITEMS										
APPROVED	<i>Cedric W. S.</i>										
	DIRECTOR - OFFICE OF TRAFFIC AND SAFETY										
SHA State Highway Administration	<table> <tr> <th>APPROVAL • SHA REVISIONS</th><th>APPROVAL • FEDERAL HIGHWAY ADMINISTRATION</th></tr> <tr> <td>APPROVAL 8-20-03</td><td>APPROVAL 9-23-03</td></tr> <tr> <td>REVISED 8-11-10</td><td>REVISED 7-29-10</td></tr> <tr> <td>REVISED 8-20-14</td><td>REVISED 8-11-14</td></tr> <tr> <td>REVISED 9-15-15</td><td>REVISED 8-13-15</td></tr> </table>	APPROVAL • SHA REVISIONS	APPROVAL • FEDERAL HIGHWAY ADMINISTRATION	APPROVAL 8-20-03	APPROVAL 9-23-03	REVISED 8-11-10	REVISED 7-29-10	REVISED 8-20-14	REVISED 8-11-14	REVISED 9-15-15	REVISED 8-13-15
APPROVAL • SHA REVISIONS	APPROVAL • FEDERAL HIGHWAY ADMINISTRATION										
APPROVAL 8-20-03	APPROVAL 9-23-03										
REVISED 8-11-10	REVISED 7-29-10										
REVISED 8-20-14	REVISED 8-11-14										
REVISED 9-15-15	REVISED 8-13-15										

Maryland Department of Transportation STATE HIGHWAY ADMINISTRATION

STANDARDS FOR HIGHWAYS AND INCIDENTAL STRUCTURES

REMOVING LANE CLOSURE STEPS 7 AND 8

STANDARD NO.

MD 104.06-04