

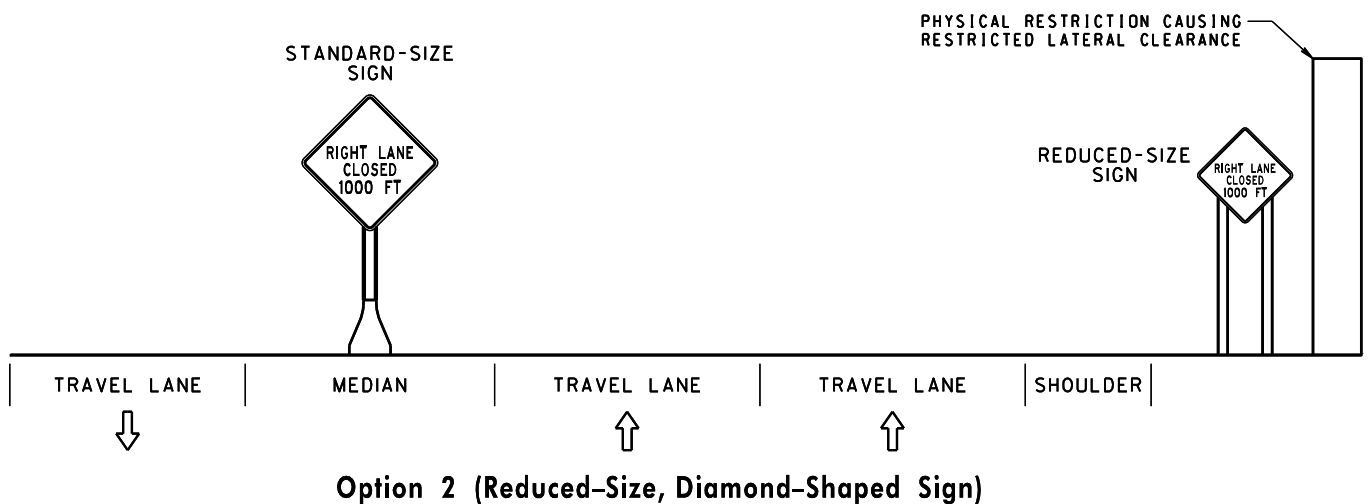
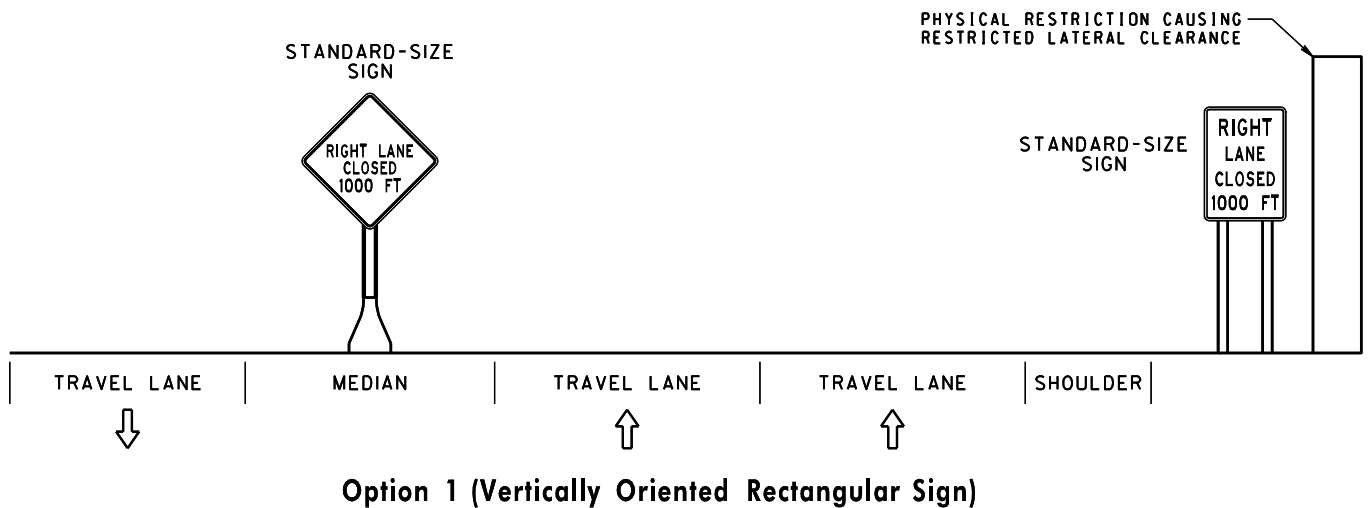
TEMPORARY TRAFFIC CONTROL TYPICAL APPLICATION

NOTES:

1. THESE OPTIONS MAY ONLY BE USED IN CASES WHERE RESTRICTED LATERAL CLEARANCE EXISTS, OR SIGN OVERHANG MAY OTHERWISE RESULT IN UNSAFE DRIVING CONDITIONS. THIS APPLIES TO LEFT SHOULDER (MEDIAN) OR RIGHT SHOULDER INSTALLATIONS.
2. MODIFICATIONS TO SIGN SHAPES, SUCH AS CUTTING OFF THE LEFT AND RIGHT POINTS OF A DIAMOND SHAPED SIGN, SHALL NOT BE ALLOWED.
3. CONTRACTOR SHALL SUBMIT SIGN DETAIL TO ENGINEER FOR APPROVAL PRIOR TO FABRICATION.
4. TEXT SIZE MAY NEED TO BE REDUCED TO FIT WITHIN SIGN BORDER, AS APPROVED BY THE ENGINEER.

REDUCED OVERHANG SIGN OPTIONS

KEY: ↑ DIRECTION OF TRAFFIC



SPECIFICATION	CATEGORY CODE ITEMS	
APPROVED	<i>Cedric Wald</i> DIRECTOR - OFFICE OF TRAFFIC AND SAFETY	
APPROVAL SHA REVISIONS	APPROVAL FEDERAL HIGHWAY ADMINISTRATION	
APPROVAL	8-20-03	APPROVAL
REVISED	04-07-26	REVISED
REVISED		04-02-26
REVISED		
REVISED		

MOT MARYLAND DEPARTMENT OF TRANSPORTATION
STATE HIGHWAY ADMINISTRATION

STANDARDS FOR HIGHWAYS AND INCIDENTAL STRUCTURES

**WARNING SIGN OPTIONS FOR
RESTRICTED LATERAL CLEARANCE CONDITIONS**

STANDARD NO. MD 104.01-32