

# TEMPORARY TRAFFIC CONTROL TYPICAL APPLICATION

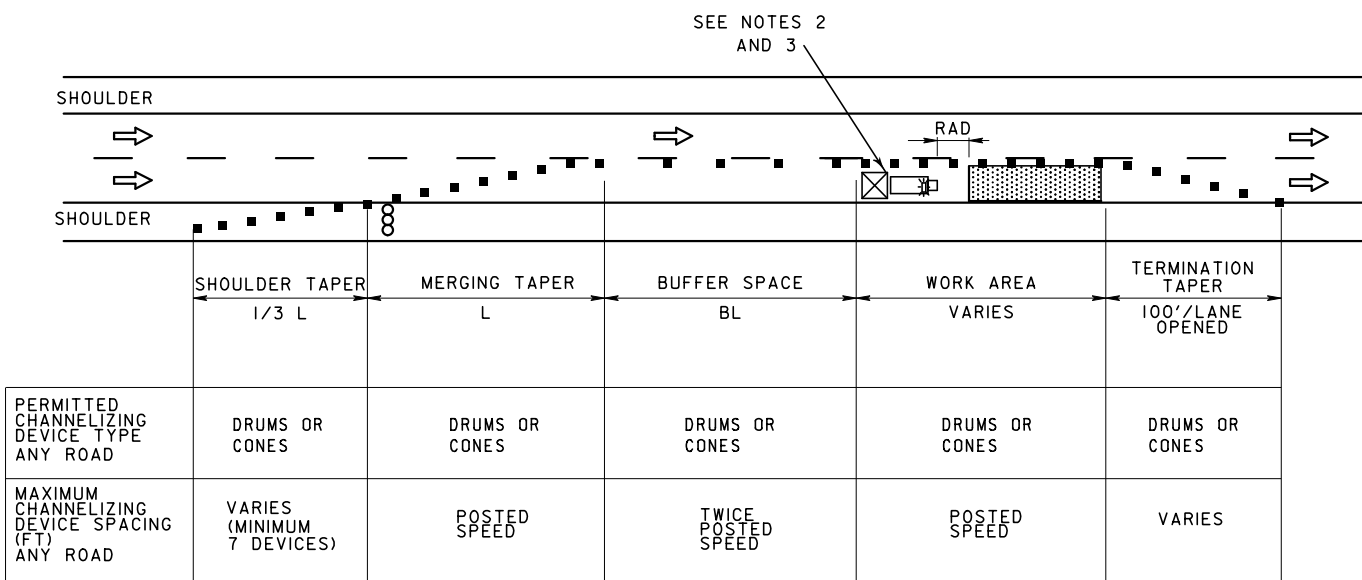
**IMPORTANT:**  
THIS DRAWING SHALL BE USED IN COMBINATION WITH THE  
GENERAL NOTES MD 104.00-01 - MD 104.00-18 AND STANDARD  
DETAILS MD 104.01-01 - MD 104.01-81.

## NOTES

1. REFER TO SECTION 7 FOR GUIDANCE ON USING CHANNELIZING DEVICES TO DELINEATE THE EDGE OF THE ROADWAY AND FOR ADDITIONAL GUIDANCE ON PERMITTED CHANNELIZING DEVICES.
2. REFER TO GENERAL NOTE 10.4 AND MD 104.01-11A FOR GUIDANCE ON USING A PROTECTION VEHICLE (PV).
3. IF A PV IS USED TO PROTECT THE WORK AREA, IT SHOULD BE PLACED IN THE WORK AREA AS SHOWN IN THE FIGURE WHILE ALLOWING FOR THE ROLL AHEAD DISTANCE (RAD) ANTICIPATED WITH IMPACT. A PV MAY BE DEPLOYED IN THE BUFFER SPACE, PROVIDED IT IS IN PROXIMITY TO THE ACTIVE WORK AREA AND THE BUFFER LENGTH IS ADJUSTED TO INCLUDE THE LENGTH OF THE PV AND THE ANTICIPATED RAD.
4. REFER TO MD 104.01-80 TO DETERMINE THE TAPER LENGTH AND MD 104.01-81 TO DETERMINE THE BUFFER LENGTH.
5. THIS TYPICAL APPLICATION DOES NOT APPLY TO PAVING OPERATIONS, BUT CAN BE USED AT THE DISCRETION OF THE ENGINEER.

**KEY:**

■ ■	CHANNELIZING DEVICES
➔	DIRECTION OF TRAFFIC
▨	WORK AREA
∞	ARROW PANEL
☒	PROTECTION VEHICLE



<b>SPECIFICATION</b> 104	<b>CATEGORY CODE ITEMS</b>	<b>MARYLAND DEPARTMENT OF TRANSPORTATION</b> STATE HIGHWAY ADMINISTRATION  <b>STANDARDS FOR HIGHWAYS AND INCIDENTAL STRUCTURES</b>  <b>CHANNELIZING DEVICE USAGE AND SPACING</b> <b>EQL/LESS THAN 40 MPH</b>
<b>APPROVED</b>	 DIRECTOR - OFFICE OF TRAFFIC AND SAFETY	
<b>APPROVAL SHA REVISIONS</b>	<b>APPROVAL FEDERAL HIGHWAY ADMINISTRATION</b>	
<b>APPROVAL</b>	<b>APPROVAL</b>	
<b>REVISD</b>	<b>REVISD</b>	
<b>REVISD</b>	<b>REVISD</b>	<b>STANDARD NO.</b>
<b>REVISD</b>	<b>REVISD</b>	<b>MD 104.01-30 B</b>