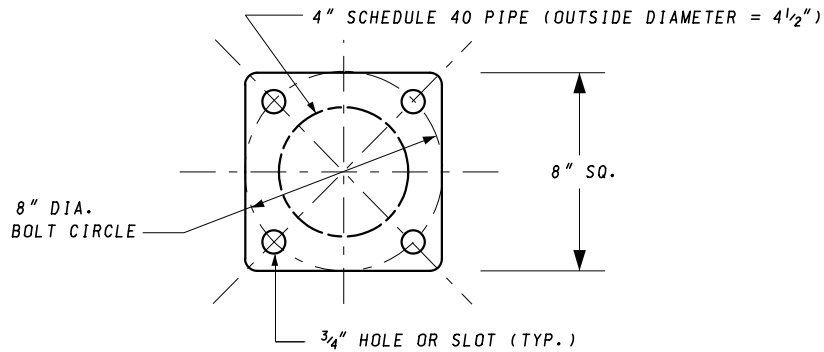
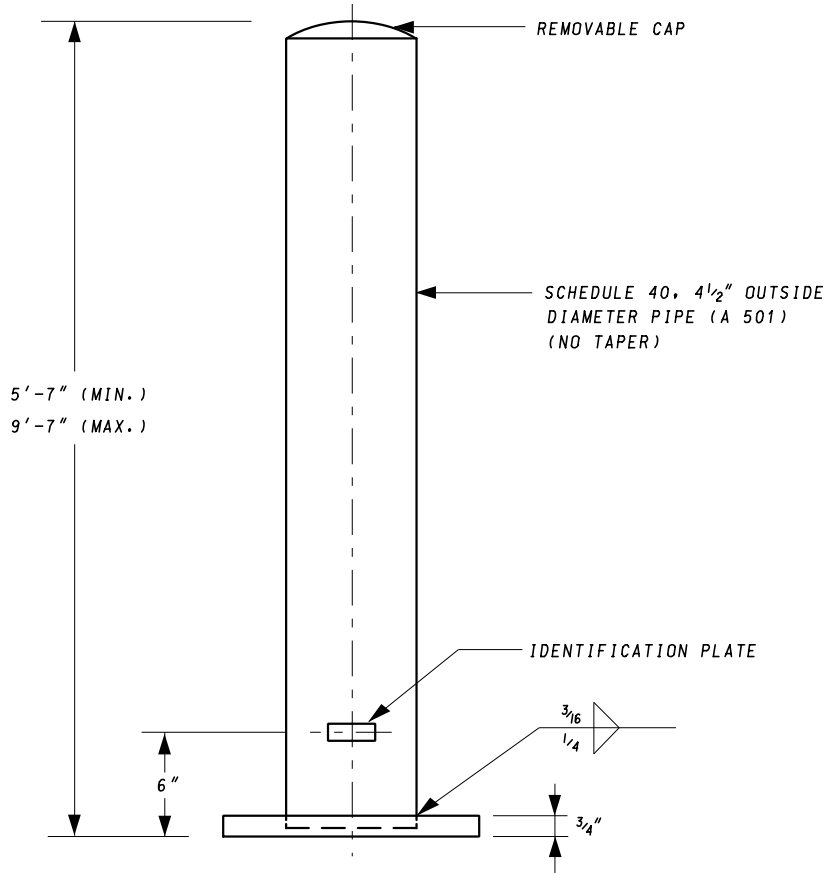


NOT TO SCALE



NOTES:

1. THIS STRUCTURE SHALL BE USED IN CONJUNCTION WITH THE SIGNAL STRUCTURE FOUNDATION FOR PUSHBUTTON AND PEDESTRIAN SIGNAL POLES. SEE STANDARD PLATE FOR DETAILS.
2. SIGNAL EQUIPMENT MOUNTED ON THIS POLE SHALL BE LIMITED TO TWO PEDESTRIAN SIGNAL HEADS AND TWO APS PUSHBUTTON STATIONS.
3. TOTAL 10' DIMENSION INCLUDES POLE HEIGHT AND BREAKAWAY COUPLINGS.

SPECIFICATION 818	CATEGORY CODE ITEMS
APPROVED	<i>Cedric Wald</i> DIRECTOR - OFFICE OF TRAFFIC AND SAFETY
APPROVAL REVISIONS	APPROVAL FEDERAL HIGHWAY ADMINISTRATION
APPROVAL 5-17-07	APPROVAL 5-2-07
REVISED 10-1-01	REVISED 2-1-01
REVISED 11-20-19	REVISED 9-4-19
REVISED	REVISED

MDOT MARYLAND DEPARTMENT OF TRANSPORTATION
STATE HIGHWAY ADMINISTRATION

STANDARDS FOR HIGHWAYS AND INCIDENTAL STRUCTURES

6' TO 10' PEDESTAL POLE FOR USE WITH BREAKAWAY COUPLINGS

STANDARD NO.

MD 818.16-01