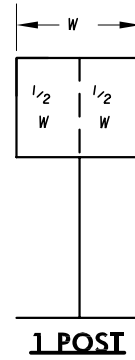


WOOD SUPPORTS

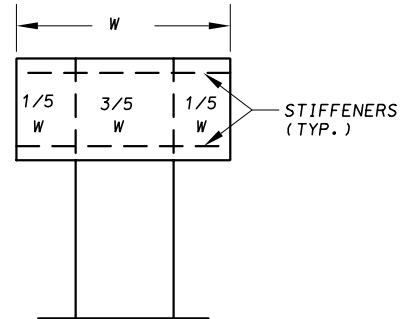
NUMBER & SIZE FOR STANDARD BLANK

SHAPE	SIZE (W x H)	POSTS
	24"	ONE (1)- 4" x 4"
	30"	ONE (1)- 4" x 4"
	36"	ONE (1)- 4" x 6"
	48"	TWO (2)- 4" x 6"
	30"	ONE (1)- 4" x 4"
	36"	ONE (1)- 4" x 4"
	48"	TWO (2)- 4" x 4"
	60"	TWO (2)- 4" x 4"
	12" x 18"	ONE (1)- 4" x 4"
	18" x 24"	ONE (1)- 4" x 4"
	24" x 30"	ONE (1)- 4" x 4"
	30" x 36"	ONE (1)- 4" x 6"
	36" x 48"	TWO (2)- 4" x 4"
	48" x 60"	TWO (2)- 4" x 6"
	21" x 15"	ONE (1)- 4" x 4"
	24" x 12"	ONE (1)- 4" x 4"
	24" x 18"	ONE (1)- 4" x 4"
	30" x 15"	ONE (1)- 4" x 4"
	30" x 24"	ONE (1)- 4" x 4"
	36" x 12"	ONE (1)- 4" x 4"
	36" x 24"	TWO (2)- 4" x 4"
	48" x 24"	TWO (2)- 4" x 4"
	48" x 36"	TWO (2)- 4" x 4"
	60" x 24"	TWO (2)- 4" x 4"
	60" x 36"	TWO (2)- 4" x 4"
	18"	ONE (1)- 4" x 4"
	24"	ONE (1)- 4" x 4"
	30"	ONE (1)- 4" x 4"
	36"	ONE (1)- 4" x 6"
	48"	TWO (2)- 4" x 6"
	* 60"	TWO (2)- 4" x 6"
ROUTE MARKER DIMENSIONS (SEE NOTE 3) * *	24" x 24"	ONE (1)- 4" x 4"
	30" x 24"	ONE (1)- 4" x 4"
	36" x 36"	ONE (1)- 4" x 6"
	45" x 36"	TWO (2)- 4" x 4"
	72" x 48"	TWO (2)- 4" x 6"
●	84" x 72"	TWO (2)- 6" x 6"

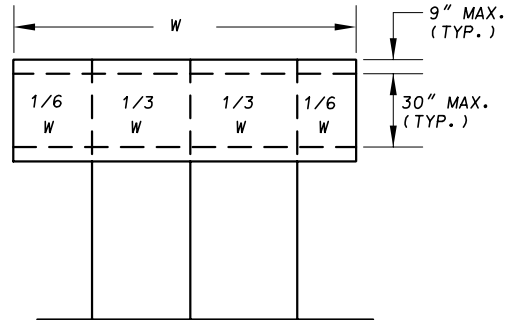
*HOLE SPACINGS VARY FROM FEDERAL BLANK STANDARDS
 ** SEE WOOD SIGN SUPPORTS ROUTE MARKER ASSEMBLIES STANDARD PLATE FOR DETAILS.
 ● SIGN BEHIND TRAFFIC BARRIER



1 POST



2 POSTS



3 POSTS

GUIDE SIGN SUPPORT SPACING

NOTES:

- SPACING MAY BE VARIED TO MEET FHWA BREAKAWAY REQUIREMENTS. (NO MORE THAN TWO 4" x 4" OR TWO DRILLED 4" x 6" POSTS WITHIN A 7'-0" DISTANCE. A MINIMUM 7'-0" SPACING BETWEEN ALL 6" x 6" OR 6" x 8" POSTS.)
- REFER TO WOOD SIGN SUPPORT FOUNDATIONS AND BREAKAWAY FEATURES FOR BREAKAWAY WOOD POST MODIFICATIONS.
- ROUTE MARKER DIMENSIONS REPRESENT THE DIMENSIONS OF THE ROUTE SHIELD ONLY. ROUTE SHIELD MAY BE SUPPLEMENTED WITH CARDINAL DIRECTION AND DIRECTIONAL ARROW SIGN PANELS. POST SIZES REPRESENT REQUIRED SUPPORT FOR COMPLETE ASSEMBLY, INCLUSIVE OF ROUTE SHIELD, CARDINAL DIRECTION AND DIRECTIONAL ARROW SIGN PANELS.
- PROVIDE 2"x4" WOOD HORIZONTAL STIFFENERS WHEN SHEET ALUMINUM SIGN WIDTH EXCEEDS 48".

SPECIFICATION 812, 813	CATEGORY CODE ITEMS
APPROVED 	DIRECTOR - OFFICE OF TRAFFIC AND SAFETY
	APPROVAL • SHA REVISIONS
	APPROVAL 2-21-95
	REVISED 5-17-07
	REVISED
	REVISED

**Maryland Department of Transportation
STATE HIGHWAY ADMINISTRATION**

STANDARDS FOR HIGHWAYS AND INCIDENTAL STRUCTURES

**WOOD SIGN SUPPORTS
POSTS SIZES & SPACING**

STANDARD NO.

MD 812.04