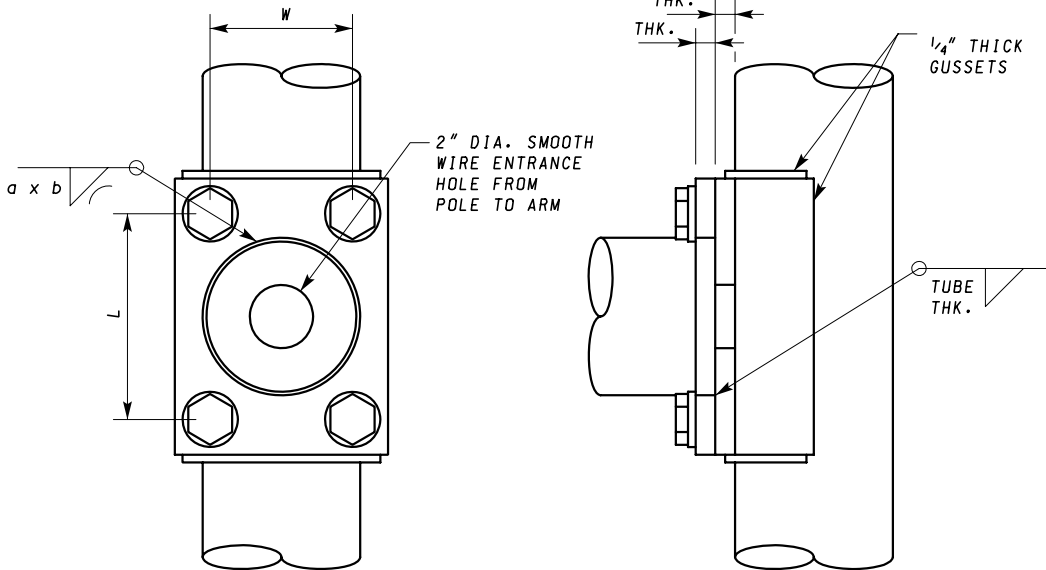
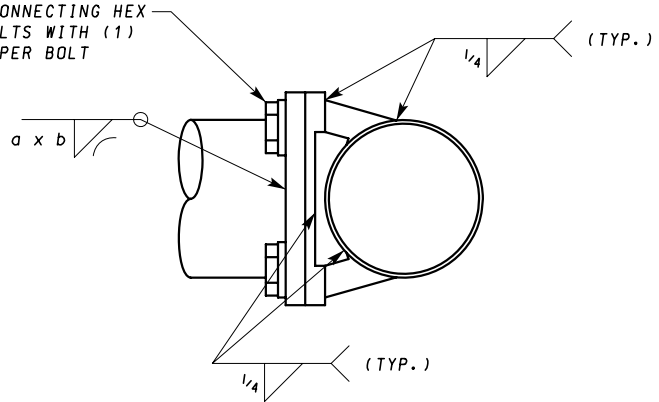
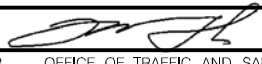



(4) - CONNECTING HEX HEAD BOLTS WITH (1) WASHER PER BOLT

ga	a	b
11	.31	.18
7	.44	.25
3	.56	.31



ARM SPREAD	DIMENSIONS				CONNECTING BOLT (A325)
	L	W	PLATE THK.		
			POLE	ARM	
12'-0"	6 1/2"	4 1/2"	5/8"	5/8"	5/8" x 1 3/4"
15'-0"	6 1/2"	4 1/2"	5/8"	5/8"	5/8" x 1 3/4"
20'-0"	7 3/4"	5 3/4"	5/8"	5/8"	5/8" x 1 3/4"
25'-0"	7 3/4"	5 3/4"	3/4"	3/4"	3/4" x 2"
30'-0"	7 3/4"	5 3/4"	3/4"	3/4"	3/4" x 2"
35'-0"	7 3/4"	5 3/4"	3/4"	3/4"	3/4" x 2"

SPECIFICATION 808	CATEGORY CODE ITEMS
APPROVED	 DIRECTOR - OFFICE OF TRAFFIC AND SAFETY
	APPROVAL • SHA REVISIONS
	APPROVAL 5-17-07
	REVISED
	REVISED
APPROVAL • FEDERAL HIGHWAY ADMINISTRATION	APPROVAL 5-2-07
REVISED	REVISED
REVISED	REVISED
REVISED	REVISED

Maryland Department of Transportation
STATE HIGHWAY ADMINISTRATION
 STANDARDS FOR HIGHWAYS AND INCIDENTAL STRUCTURES

12' - 35' BRACKET ARM CONNECTION DETAIL

STANDARD NO. MD 808.01-01