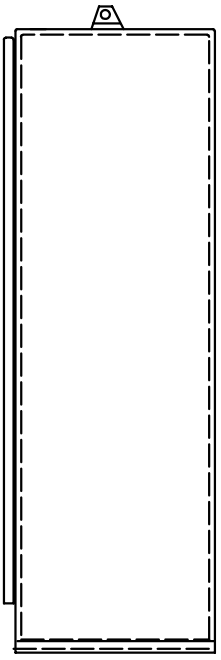
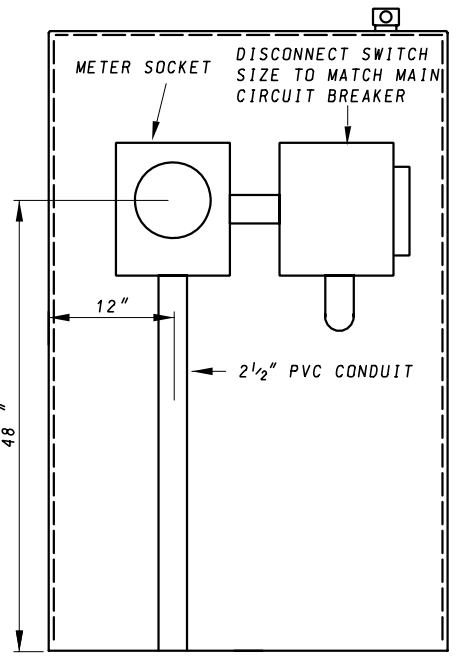


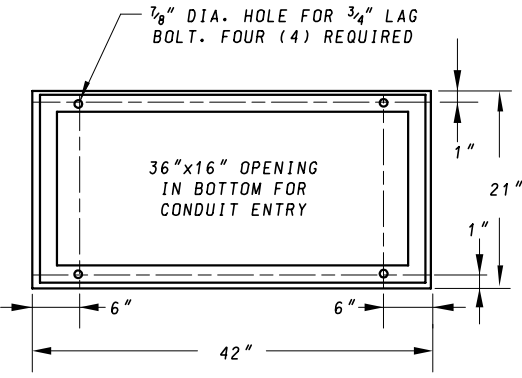
**FRONT VIEW**



**SIDE VIEW**



**BACK VIEW**



**BOTTOM VIEW**

**NOTES:**

1. CABINET SHALL BE NEMA 4X AND SHALL BE FABRICATED FROM ALUMINUM ALLOY.
2. REFER TO FOUNDATION DETAILS FOR BASE-MOUNTED LIGHTING CONTROL CABINET STANDARD PLATE FOR DETAILS.
3. AN INTEGRAL DOOR LOCK IS NOT REQUIRED. THE DOOR LATCH SHALL HAVE PROVISIONS FOR A PADLOCK.

SPECIFICATION <b>807</b>	CATEGORY CODE ITEMS
APPROVED	 DIRECTOR - OFFICE OF TRAFFIC AND SAFETY
 <b>SHA</b> <small>Division of State Highway Administration</small>	APPROVAL • SHA REVISIONS
	APPROVAL • FEDERAL HIGHWAY ADMINISTRATION
	APPROVAL <b>7-1-94</b>
	REVISIONS <b>5-17-07</b>
	REVISIONS

**Maryland Department of Transportation**  
**STATE HIGHWAY ADMINISTRATION**  
 STANDARDS FOR HIGHWAYS AND INCIDENTAL STRUCTURES

**LIGHTING CONTROL CABINET**

**STANDARD NO. MD 807.03**