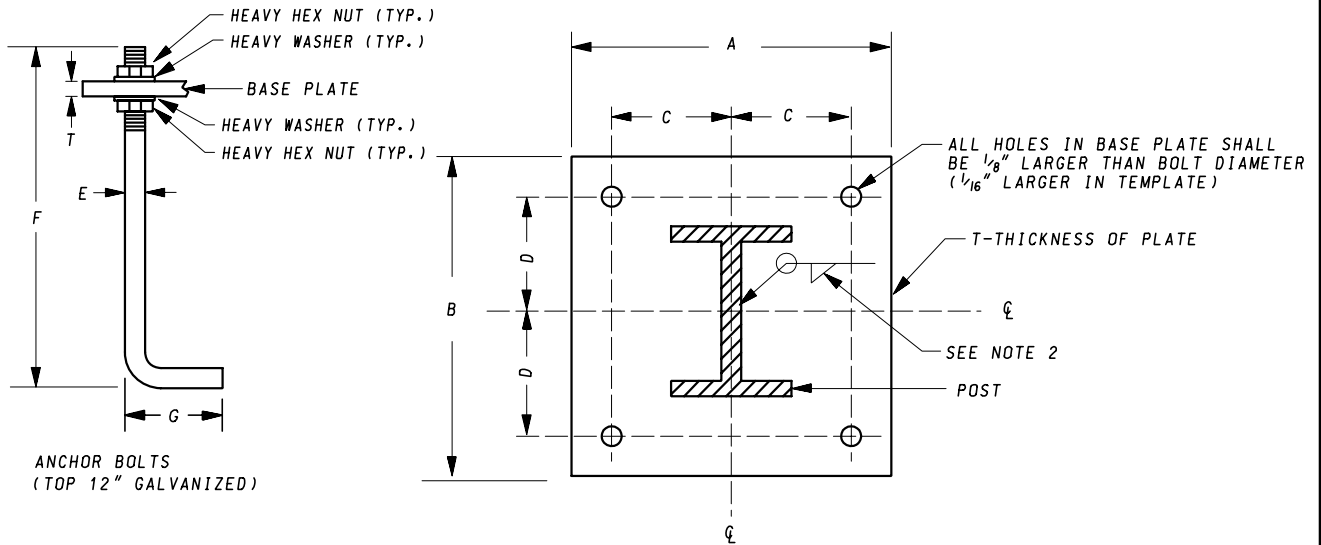


NON BREAKAWAY BASE PLATE AND ANCHOR BOLT DETAILS



NOTES:

1. $\frac{1}{4}$ " THICK STEEL TEMPLATE FOR SETTING ANCHOR BOLTS SHALL BE ACCURATELY PLACED AND LEFT IN PLACE UNTIL THE CONCRETE HAS ATTAINED ITS INITIAL SET.
2. THE WELD SIZE SHALL BE $\frac{5}{16}$ " FOR W18 x 35 AND W21 x 44 BEAM SIZES AND $\frac{1}{4}$ " FOR ALL OTHER BEAM SIZES.

BASE PLATE DIMENSIONS (INCHES)

POST SIZE	A	B	C	D	T	ANCHOR BOLTS		
						E	F	G
W6 x 9	12	14	4	5	1	1	36	4
W6 x 12	12	14	4	5	1	1	36	4
W6 x 15	12	14	4	5	1	1	36	4
W8 x 18	12	16	4	6 $\frac{1}{4}$	1 $\frac{1}{4}$	1	36	4
W8 x 21	12	17	4	6 $\frac{1}{4}$	1 $\frac{1}{4}$	1 $\frac{1}{4}$	42	6
W10 x 22	13	19	4	7 $\frac{1}{4}$	1 $\frac{1}{4}$	1 $\frac{1}{4}$	42	6
W10 x 26	13	19	4	7 $\frac{1}{4}$	1 $\frac{1}{2}$	1 $\frac{1}{4}$	42	6
W12 x 26	15	22	5	8 $\frac{1}{4}$	1 $\frac{1}{2}$	1 $\frac{1}{4}$	42	6
W14 x 30	17	23	6	9	1 $\frac{1}{2}$	1 $\frac{1}{4}$	42	6
W16 x 31	14	25	4 $\frac{3}{4}$	10	1 $\frac{3}{4}$	1 $\frac{1}{2}$	54	6
W18 x 35	15	27	5	11	1 $\frac{3}{4}$	1 $\frac{1}{2}$	54	6
W21 x 44	15	30	5 $\frac{1}{4}$	12 $\frac{1}{2}$	2	1 $\frac{3}{4}$	72	6

SPECIFICATION 802	CATEGORY CODE ITEMS	Maryland Department of Transportation STATE HIGHWAY ADMINISTRATION STANDARDS FOR HIGHWAYS AND INCIDENTAL STRUCTURES GALVANIZED STEEL BEAM SIGN POSTS NON BREAKAWAY BASE PLATE & ANCHOR BOLTS
APPROVED	 DIRECTOR - OFFICE OF TRAFFIC AND SAFETY	
 State Highway Administration	APPROVAL • SHA REVISIONS	
	APPROVAL 2-21-95	APPROVAL 2-21-95
	REVISED 5-17-07	REVISED 5-2-07
	REVISED	REVISED
REFERENCED ON: MD 801.04		STANDARD NO. MD 802.03