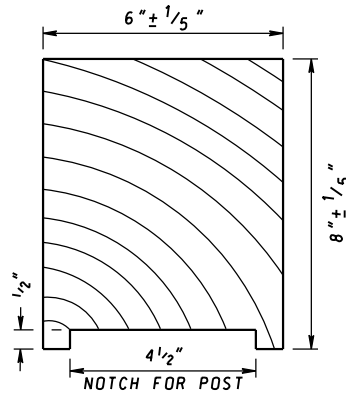
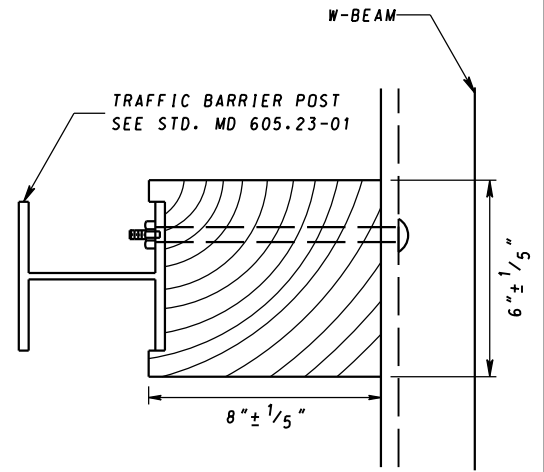


**FRONT VIEW**



**TOP VIEW**




**TOP VIEW  
(TRAFFIC BARRIER POST  
WITH 6"X8"X10" BLOCK)**

**6"X8"X10" OFFSET BLOCK**

**NOTES**

1. THE OFFSET BLOCK SHOWN HERE SHALL ONLY BE USED WITH THE HALF POST SPACING GUARDRAIL SYSTEM AS SHOWN IN STD. MD 605.31-01
2. WOOD OFFSET BLOCKS 6"x8"x10" TO BE USED UNLESS OTHERWISE SPECIFIED OR DIRECTED BY THE ENGINEER.
3. FOR BOLT AND BOLT NUT DETAILS, SEE STD. MD 605.23.
4. COMPOSITE OFFSET BLOCKS THAT ARE APPROVED BY THE ADMINISTRATION MAY BE USED IN LIEU OF WOOD OFFSET BLOCKS (EITHER DUE TO CONTRACTOR'S CHOICE OR WHEN SPECIFIED IN THE CONTRACT DOCUMENTS). REFER TO OPL FOR APPROVED SUBSTITUTES.

SPECIFICATION <b>605</b>	CATEGORY CODE ITEMS	<div style="text-align: center;">  <b>MARYLAND DEPARTMENT OF TRANSPORTATION</b>  <b>STATE HIGHWAY ADMINISTRATION</b> </div> <p>STANDARDS FOR HIGHWAYS AND INCIDENTAL STRUCTURES</p> <p><b>OFFSET BLOCK FOR HALF POST SPACING GUARDRAIL</b></p>	
APPROVED	<i>[Signature]</i> DIRECTOR - OFFICE OF HIGHWAY DEVELOPMENT		
APPROVAL SHA REVISIONS	APPROVAL FEDERAL HIGHWAY ADMINISTRATION		
APPROVAL <b>7-10-25</b>	APPROVAL <b>7-08-25</b>		
REVISED	REVISED		
REVISED	REVISED		
REVISED	REVISED	<p><b>STANDARD NO. MD 605.31-02</b></p>	