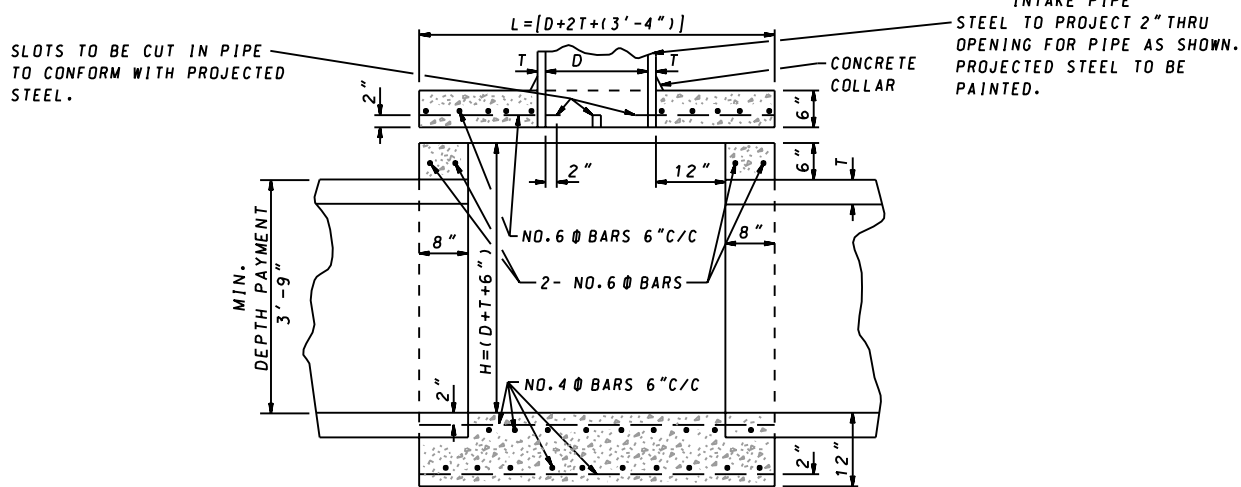


CONCRETE SHALL BE MIX NO. 2  
REINFORCEMENT-DEFORMED BARS

NOTE: NO PROVISION IS TO BE MADE IN  
SLAB FOR INTAKE PIPE WHEN  
NOT NEEDED.

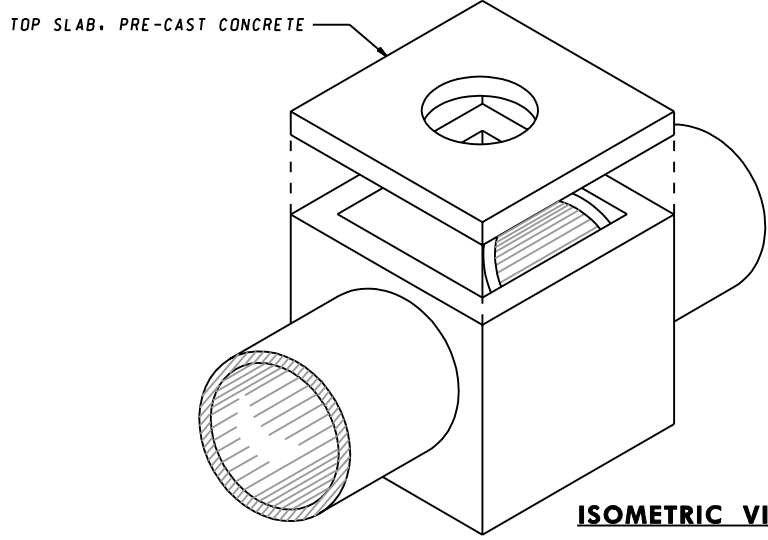
**SECTION AT PIPE OPENING**



INTAKE PIPE  
STEEL TO PROJECT 2" THRU  
OPENING FOR PIPE AS SHOWN.  
PROJECTED STEEL TO BE  
PAINTED.

SLOTS TO BE CUT IN PIPE  
TO CONFORM WITH PROJECTED  
STEEL.

**SECTION ALONG C OF PIPE**



**ISOMETRIC VIEW**

SPECIFICATION <b>305</b>	CATEGORY CODE ITEMS
-----------------------------	---------------------

APPROVED *Kirk G. McCall*  
DIRECTOR - OFFICE OF HIGHWAY DEVELOPMENT



APPROVAL • SHA REVISIONS	APPROVAL • FEDERAL HIGHWAY ADMINISTRATION
APPROVAL 2-7-51	APPROVAL 3-23-56
REVISED 10-1-01	REVISED
REVISED	REVISED
REVISED	REVISED

**Maryland Department of Transportation**  
**STATE HIGHWAY ADMINISTRATION**  
STANDARDS FOR HIGHWAYS AND INCIDENTAL STRUCTURES

**STANDARD JUNCTION BOX**

**STANDARD NO. MD 386.11**