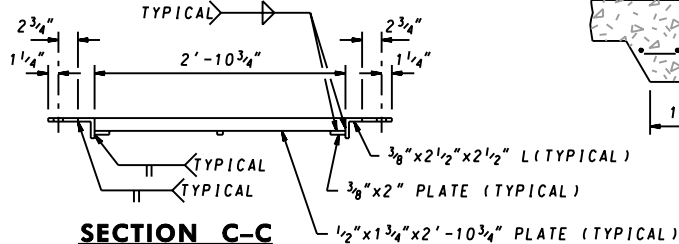


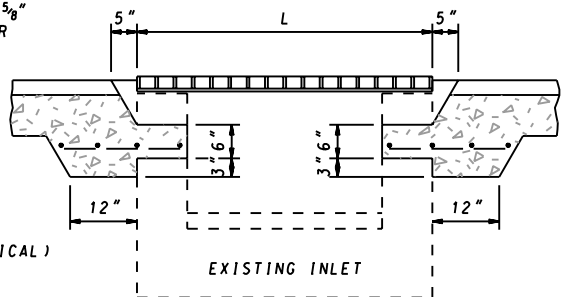
**GENERAL NOTES**

1. CONCRETE TO BE CONCRETE MIX NO.2.
2. REINFORCEMENT TO BE NO.4 (1/2" Ø) DEFORMED BARS AT 6" C/C. 2" COVER.
3. GRATE TO BE OF STEEL CONSTRUCTION & SHALL BE SQUARE, FLAT & TRUE.
4. STRUCTURAL STEEL SHALL BE A.S.T.M. DESIGNATION A-36.
5. GRATE TO BE GALV. AFTER FABRICATION IN ACCORDANCE A.S.T.M. DESIGNATION A-123.
6. SEE LATEST S.H.A. SPECIFICATIONS.
7. INSTALL 4-5/8" Ø CONCRETE EXPANSION ANCHORS WITH 4-5/8" Ø HEX. HEAD BOLTS. (GALV.)

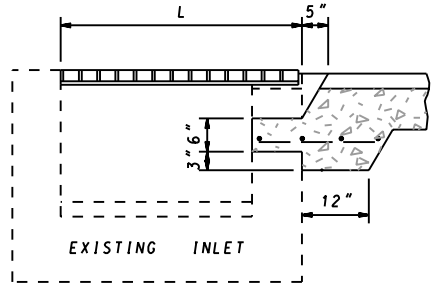
**PLAN-GRATE**



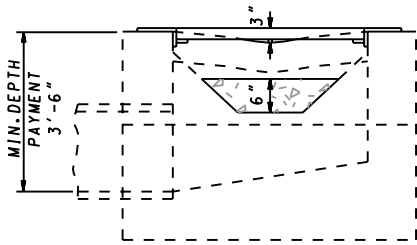
**SECTION C-C**



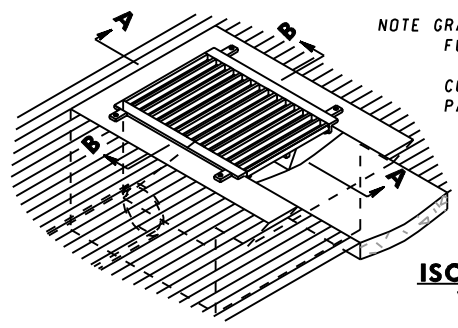
**SECTION A-A DOUBLE OPENING**



**SECTION A-A SINGLE OPENING**

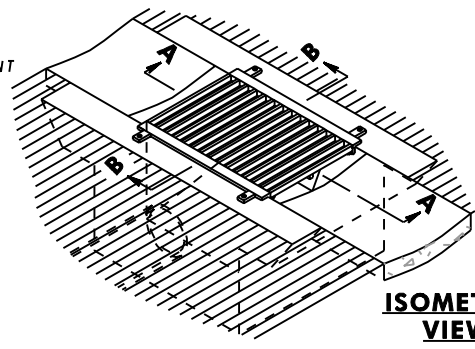


**SECTION B-B**



**SINGLE OPENING**

NOTE GRATE TO BE AS SHOWN OR FURNISH APPROVED EQUIVALENT  
CONCRETE GUTTER TO BE PAID FOR SEPARATELY.



**DOUBLE OPENING**

SPECIFICATION <b>305</b>	CATEGORY CODE ITEMS
APPROVED <i>Kirk G. McCall</i> DIRECTOR - OFFICE OF HIGHWAY DEVELOPMENT	
	APPROVAL • SHA REVISIONS
	APPROVAL • FEDERAL HIGHWAY ADMINISTRATION
	APPROVAL 3-8-73
	APPROVAL 3-16-73
REVISED 10-1-01	REVISED 2-8-83
REVISED	REVISED
REVISED	REVISED

**Maryland Department of Transportation**  
**STATE HIGHWAY ADMINISTRATION**  
STANDARDS FOR HIGHWAYS AND INCIDENTAL STRUCTURES

**STANDARD TYPE K INLET REPLACEMENT GRATE**

**STANDARD NO. MD 378.04**