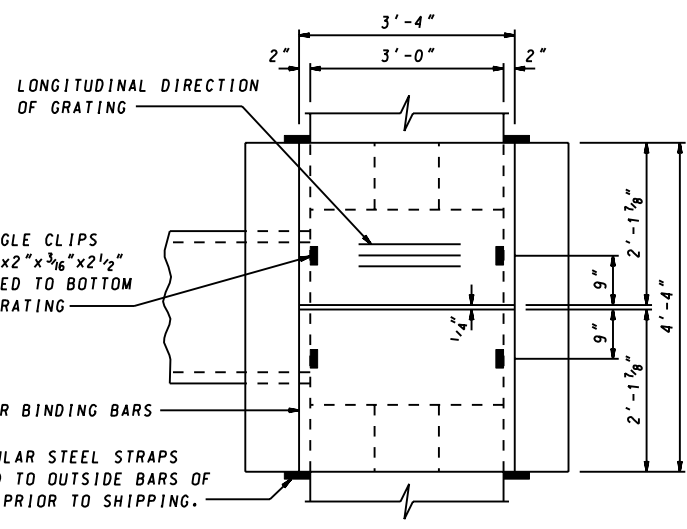
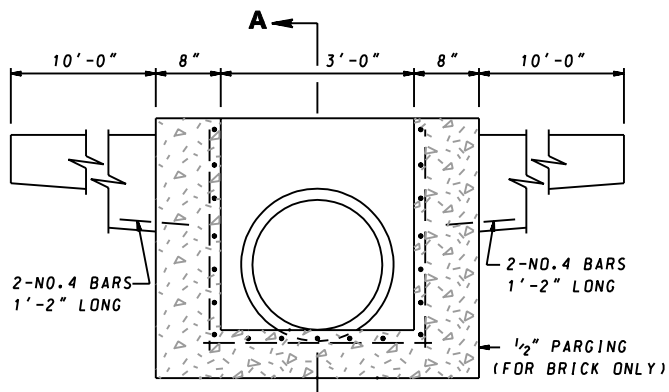


END STRAP DETAIL

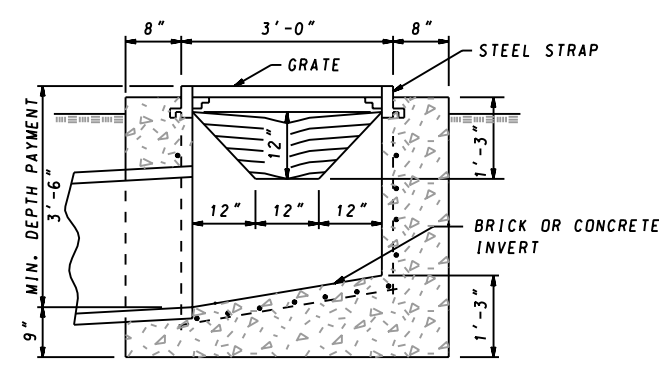
3/16" SLOTTED HOLE TO RECEIVE 1/2"x4" MACHINE BOLT (GALV.) IMBEDDED 3" IN CONC. WALL. NUT TO BE PLACED ON END OF BOLT AFTER GRATE IS INSTALLED.



PLAN



ELEVATION

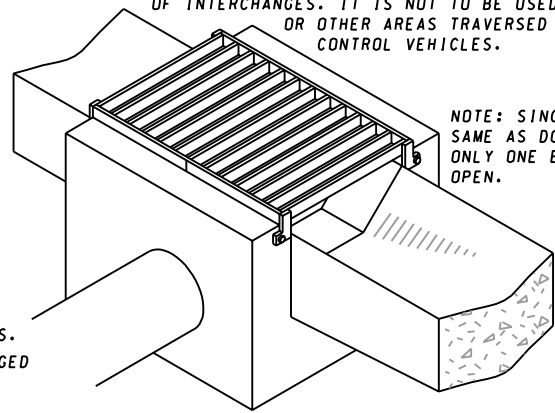


SECTION A-A

NOTES

1. THE CONCRETE VALLEY GUTTER TO BE USED IN CONNECTION WITH THIS INLET, WILL BE WARPED FROM THE STANDARD SECTION TO MEET THE SECTION AT THE END OF THE INLET. THIS TRANSITION WILL TAKE PLACE WITH A DISTANCE OF TEN (10) FEET FROM THE INLET. GUTTER TO BE PAID FOR SEPARATELY.
2. PIPE OUTLETS AND GUTTER APPROACHES CAN BE REVISED TO MEET EXISTING CONDITIONS.
3. INLET MAY BE CONSTRUCTED OF REINFORCED CONCRETE (MIX NO. 2) OR BRICK. CHAMFER INSIDE CORNER 3/4"x3/4". REINFORCEMENT NO. 4 BARS @ 6" C/C, 2" COVER.
4. GRATINGS ARE SUBJECT TO APPROVAL FOR EACH JOB. ANY TYPE OF SUBSTANTIAL TRANSVERSE BARS MAY BE USED WHICH WILL SUPPORT A MINIMUM UNIFORM LOAD OF 50 LBS./SQ.FT. THE TRANSVERSE BARS SHALL BE HELD RIGID BY SPACER BARS.
5. AREA TO BE MADE UP OF TWO EQUAL paneled WIDTHS, ARRANGED FOR BOLTING TOGETHER IN THE FIELD.
6. ALL MATERIAL TO BE HOT DIPPED GALVANIZED.

NOTE THIS TYPE OF INLET MAY BE USED IN CONJUNCTION WITH BERM DITCHES, BENCHES, AND SUMP AREAS OF INNER LOOPS OF INTERCHANGES. IT IS NOT TO BE USED IN MEDIANS OR OTHER AREAS TRAVERSED BY OUT-OF-CONTROL VEHICLES.



ISOMETRIC VIEW
(DOUBLE OPENING SHOWN)

NOTE: SINGLE OPENING SAME AS DOUBLE EXCEPT ONLY ONE END IS OPEN.

SPECIFICATION 305	CATEGORY CODE ITEMS
APPROVED	<i>Kirk G. McCall</i> DIRECTOR - OFFICE OF HIGHWAY DEVELOPMENT
	APPROVAL • SHA REVISIONS
	APPROVAL 1-23-69
	REVISED 10-1-01
	REVISED
APPROVAL • FEDERAL HIGHWAY ADMINISTRATION	APPROVAL 2-6-69
REVISED 6-23-87	REVISED
REVISED	REVISED

Maryland Department of Transportation
STATE HIGHWAY ADMINISTRATION
 STANDARDS FOR HIGHWAYS AND INCIDENTAL STRUCTURES
STANDARD SINGLE OR DOUBLE OPENING
TYPE K INLET OPEN-END GRATE
NON-TRAFFIC AREAS
STANDARD NO. MD 378.03