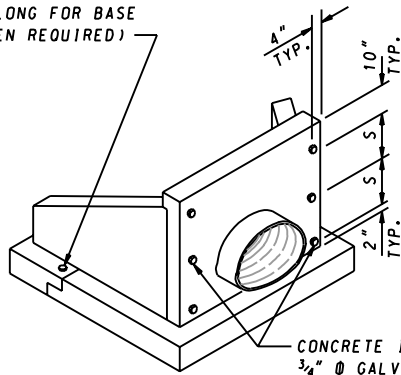


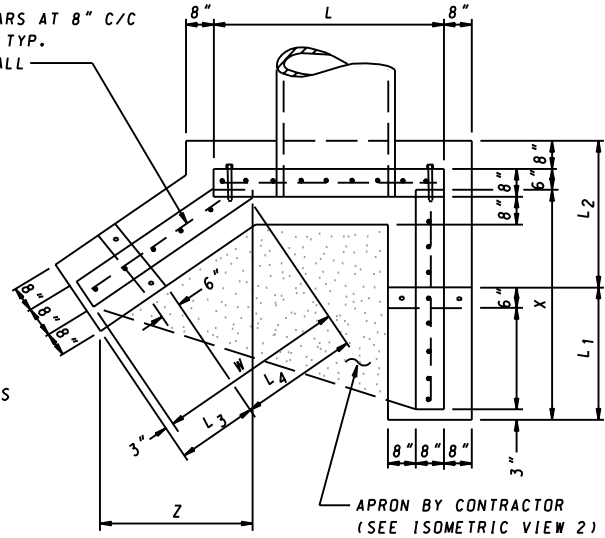
CONCRETE INSERTS WITH
3/4" Ø GALV. LAG BOLTS
8" LONG FOR BASE
(WHEN REQUIRED)



ISOMETRIC VIEW 1

CONCRETE INSERTS WITH
3/4" Ø GALV. LAG BOLTS
10" LONG FOR WING WALLS

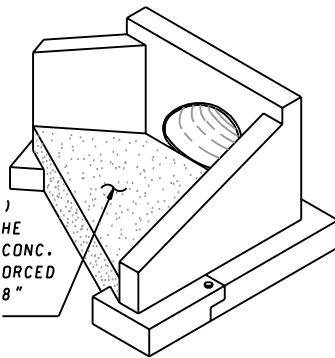
NO.5 BARS AT 8" C/C
2 WAYS TYP.
EACH WALL



APRON BY CONTRACTOR
(SEE ISOMETRIC VIEW 2)

PLAN

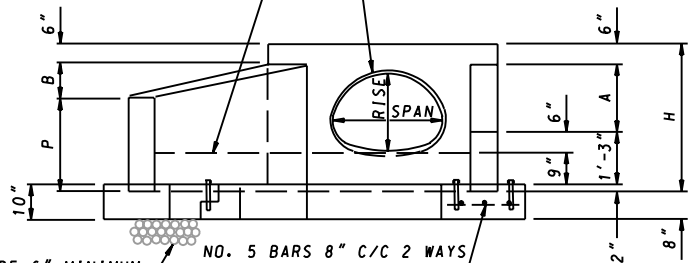
APRON (SHADED AREA)
CAST IN PLACE BY THE
CONTRACTOR, USING CONC.
MIX NO.2 AND REINFORCED
WITH NO.5 BARS AT 8"
C/C 2 WAYS, 2" CL.



ISOMETRIC VIEW 2

APRON BY CONTRACTOR
(SEE ISOMETRIC VIEW 2)

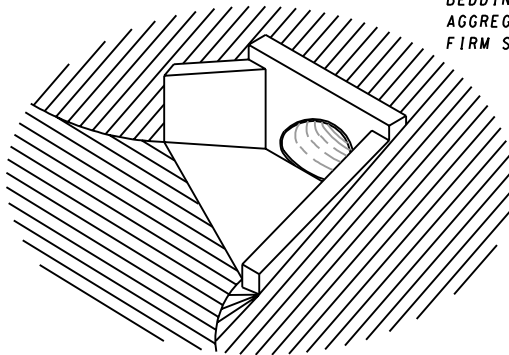
PIPE BY CONTRACTOR
OPENING BY MANUFACTURER



PROVIDE 6" MINIMUM
BEDDING OF NO.57
AGGREGATE ON
FIRM SUBGRADE

NO. 5 BARS 8" C/C 2 WAYS
TYP. EACH BASE PIECE


ELEVATION



ISOMETRIC VIEW 3

NOTES

1. THIS TYPE F ENDWALL SHALL NOT BE USED WITHIN THE CLEAR RECOVERY ZONE.
2. CONCRETE SHALL BE MIX NO. 6 (4500 PSI).
3. REINFORCEMENT SHALL BE DEFORMED BARS AS SHOWN OR WELDED WIRE FABRIC WITH AN EQUIVALENT AREA FOR SQUARE FOOT. DEFORMED BARS SHALL CONFORM TO ASTM A 615, GRADE 60. WELDED WIRE FABRIC SHALL CONFORM TO ASTM A 185 AND A 82.
4. SEE CHARTS ON STANDARD MD-359.03 FOR DIMENSIONS NOT SHOWN.
5. LIFT HOLES OR LIFT EYES SHALL BE PROVIDED FOR HANDLING.
6. EXCAVATION, BACKFILL, CONCRETE, REINFORCEMENT FOR APRON, AND NO.57 AGGREGATE WILL BE INCIDENTAL TO THE CONTRACT PRICE PER EACH FOR THE ENDWALL.
7. CHAMFER ALL EXPOSED EDGES 1" X 1" OR AS DIRECTED.

SPECIFICATION 305	CATEGORY CODE ITEMS
APPROVED	<i>Kirk G. McCall</i> DIRECTOR - OFFICE OF HIGHWAY DEVELOPMENT
	APPROVAL • SHA REVISIONS
	APPROVAL • FEDERAL HIGHWAY ADMINISTRATION
	APPROVAL 6-23-92
	REVISION 10-1-01
REVISION	REVISION 12-16-93
REVISION	REVISION
REVISION	REVISION

Maryland Department of Transportation
STATE HIGHWAY ADMINISTRATION
STANDARDS FOR HIGHWAYS AND INCIDENTAL STRUCTURES

**PRECAST TYPE F ENDWALL
METAL PIPE ARCH**

STANDARD NO. MD 359.02