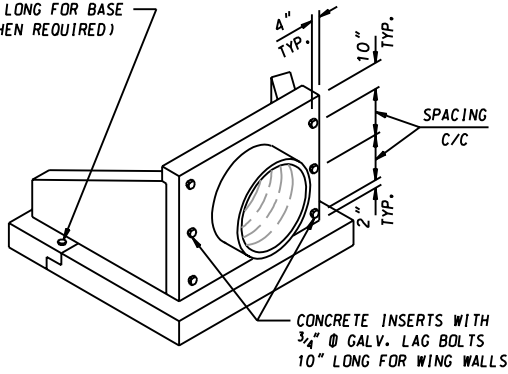
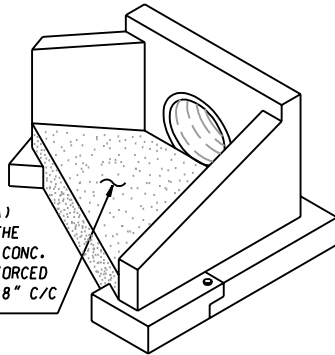


CONCRETE INSERTS WITH
3/4" Ø GALV. LAG BOLTS
8" LONG FOR BASE
(WHEN REQUIRED)

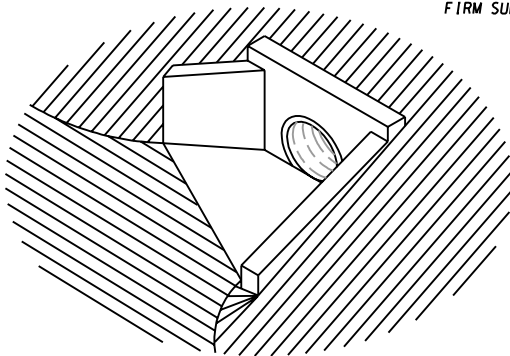


ISOMETRIC VIEW 1

APRON (SHADED AREA)
CAST IN PLACE BY THE
CONTRACTOR, USING CONC.
MIX NO.2 AND REINFORCED
WITH NO.5 BARS AT 8" C/C
2 WAYS, 2" CL.

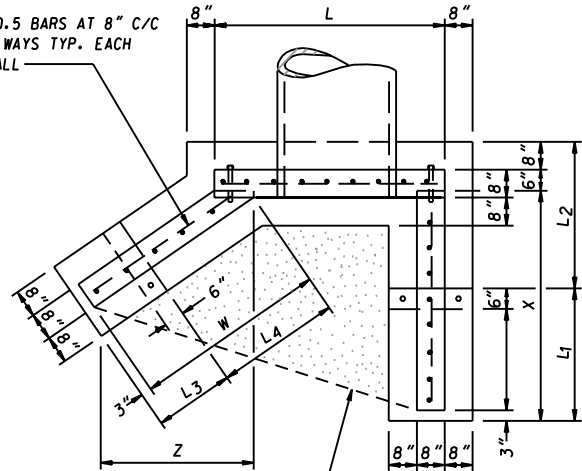


ISOMETRIC VIEW 2



ISOMETRIC VIEW 3

NO.5 BARS AT 8" C/C
2 WAYS TYP. EACH
WALL

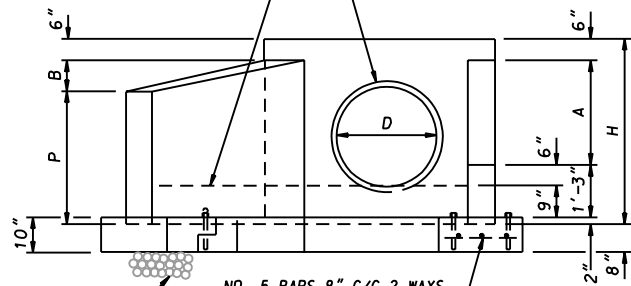


APRON BY CONTRACTOR
(SEE ISOMETRIC VIEW 2)

PLAN

APRON BY CONTRACTOR
(SEE ISOMETRIC VIEW 2)

PIPE BY CONTRACTOR
OPENING BY MANUFACTURER



PROVIDE 6" MINIMUM BEDDING
OF NO.57 AGGREGATE ON
FIRM SUBGRADE

NO. 5 BARS 8" C/C 2 WAYS
TYP. EACH BASE PIECE

ELEVATION

NOTES

1. THIS TYPE F ENDWALL SHALL NOT BE USED WITHIN THE CLEAR RECOVERY ZONE.
2. CONCRETE SHALL BE MIX NO.6 (4500 PSI).
3. REINFORCEMENT SHALL BE DEFORMED BARS AS SHOWN OR WELDED WIRE FABRIC WITH AN EQUIVALENT AREA PER SQUARE FOOT. DEFORMED BARS SHALL CONFORM TO ASTM A 615, GRADE 60. WELDED WIRE FABRIC SHALL CONFORM TO ASTM A 185 AND A 82.
4. SEE CHARTS ON STANDARD MD 358.05 FOR DIMENSIONS NOT SHOWN.
5. LIFT HOLES OR LIFT EYES SHALL BE PROVIDED FOR HANDLING.
6. EXCAVATION, BACKFILL, CONCRETE, REINFORCEMENT FOR APRON, AND NO.57 AGGREGATE WILL BE INCIDENTAL TO THE CONTRACT PRICE PER EACH FOR THE ENDWALL.
7. CHAMFER ALL EXPOSED EDGES 1"x1" OR AS DIRECTED.

SPECIFICATION
305

CATEGORY CODE ITEMS

APPROVED

Kirk G. McCall
DIRECTOR - OFFICE OF HIGHWAY DEVELOPMENT



APPROVAL • SHA
REVISIONS
APPROVAL 6-23-92
REVISED 10-1-01
REVISED
REVISED

APPROVAL • FEDERAL
HIGHWAY ADMINISTRATION
APPROVAL 6-23-92
REVISED 6-20-95
REVISED
REVISED

Maryland Department of Transportation
STATE HIGHWAY ADMINISTRATION
STANDARDS FOR HIGHWAYS AND INCIDENTAL STRUCTURES

PRECAST TYPE F ENDWALL
METAL OR CONCRETE ROUND PIPE

STANDARD NO. MD 358.04