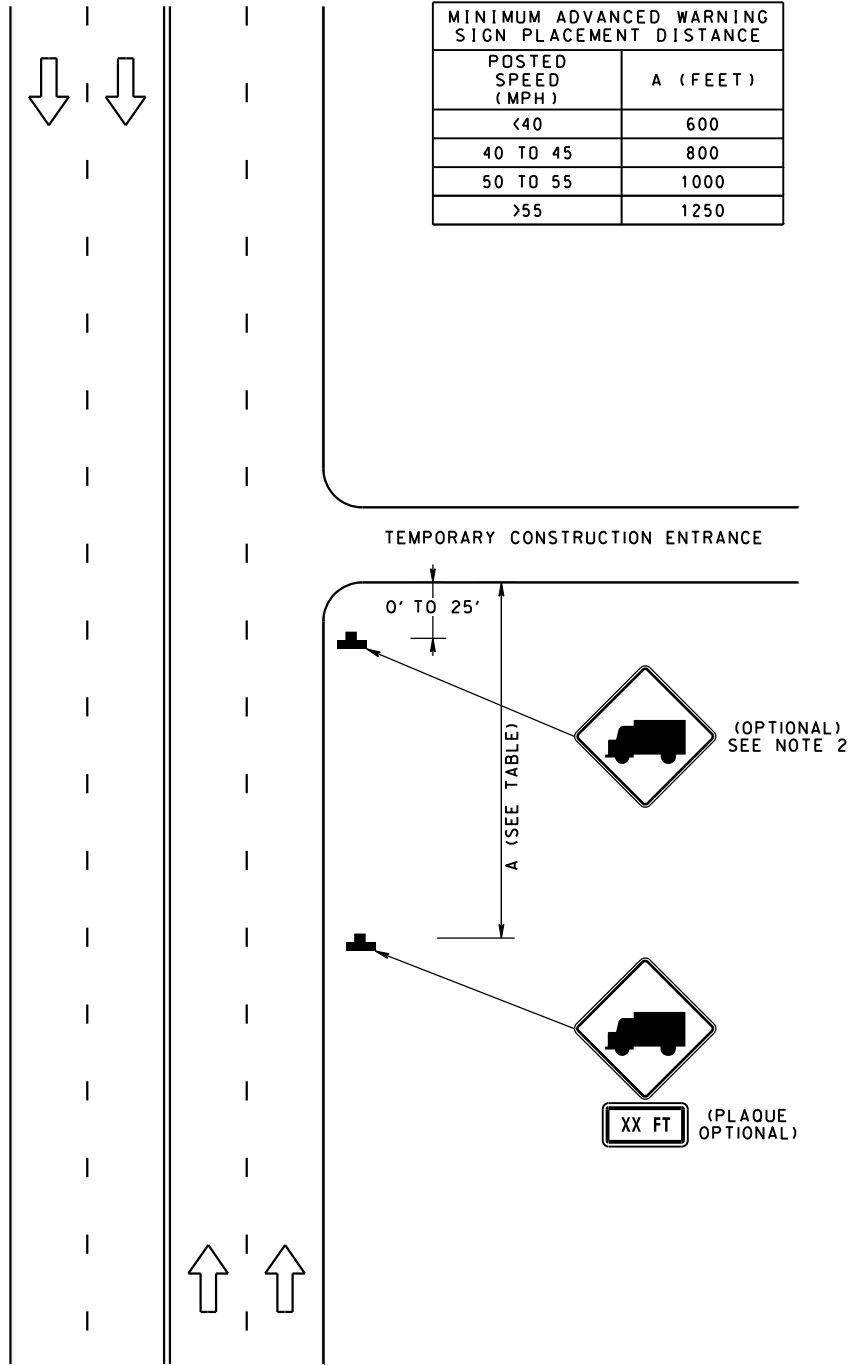


# TEMPORARY TRAFFIC CONTROL TYPICAL APPLICATION

MINIMUM ADVANCED WARNING SIGN PLACEMENT DISTANCE	
POSTED SPEED (MPH)	A (FEET)
<40	600
40 TO 45	800
50 TO 55	1000
>55	1250



**IMPORTANT:**

THIS DRAWING SHALL BE USED IN COMBINATION WITH THE GENERAL NOTES MD 104.00-01 - MD 104.00-18 AND STANDARD DETAILS MD 104.01-01 - MD 104.01-81.

**NOTES:**

1. REFER TO OTHER RELEVANT STANDARDS FOR PLACEMENT OF WARNING SIGNS AND DEVICES.
2. THE ENGINEER WILL DETERMINE IF THE SIGN IS REQUIRED.
3. WHEN A LEFT TURN INTO/OUT OF THE TEMPORARY CONSTRUCTION ENTRANCE IS PERMITTED, TRUCK WARNING SIGNING WILL BE THE SAME FOR BOTH APPROACHES.

**KEY:**



DIRECTION OF TRAFFIC

SPECIFICATION	CATEGORY CODE ITEMS
APPROVED	<i>Cedric Wald</i> DIRECTOR - OFFICE OF TRAFFIC AND SAFETY
APPROVAL SHA REVISIONS	APPROVAL FEDERAL HIGHWAY ADMINISTRATION
APPROVAL 04-07-26	APPROVAL 04-02-26
REVISED	REVISED
REVISED	REVISED
REVISED	REVISED

**MOT** MARYLAND DEPARTMENT OF TRANSPORTATION  
STATE HIGHWAY ADMINISTRATION

**STANDARDS FOR HIGHWAYS AND INCIDENTAL STRUCTURES  
ACCESS OF WORK VEHICLES TO/FROM THE WORK SPACE  
TRUCK WARNING SIGN PLACEMENT FOR  
TEMPORARY CONSTRUCTION ENTRANCE**

**STANDARD NO.**

**MD 104.06-33A**