

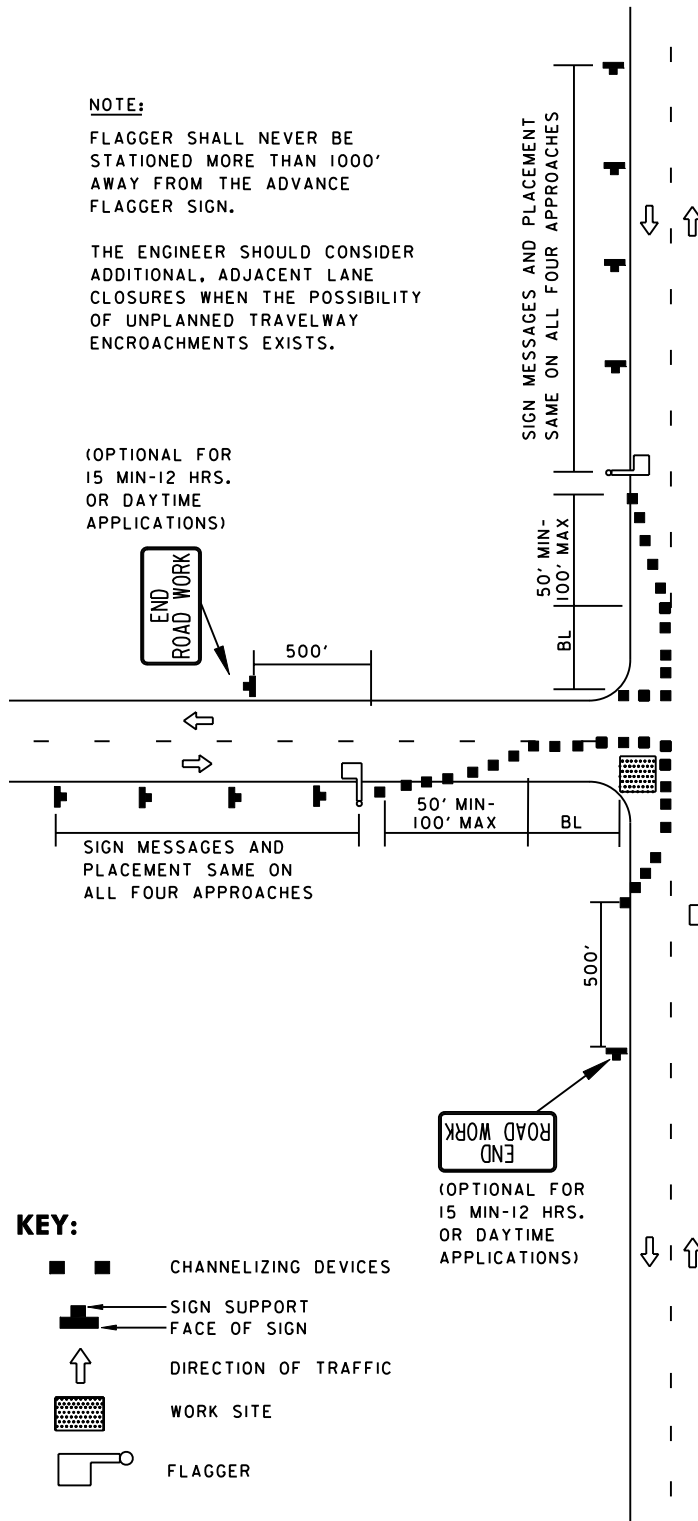
TEMPORARY TRAFFIC CONTROL TYPICAL APPLICATION

NOTE:

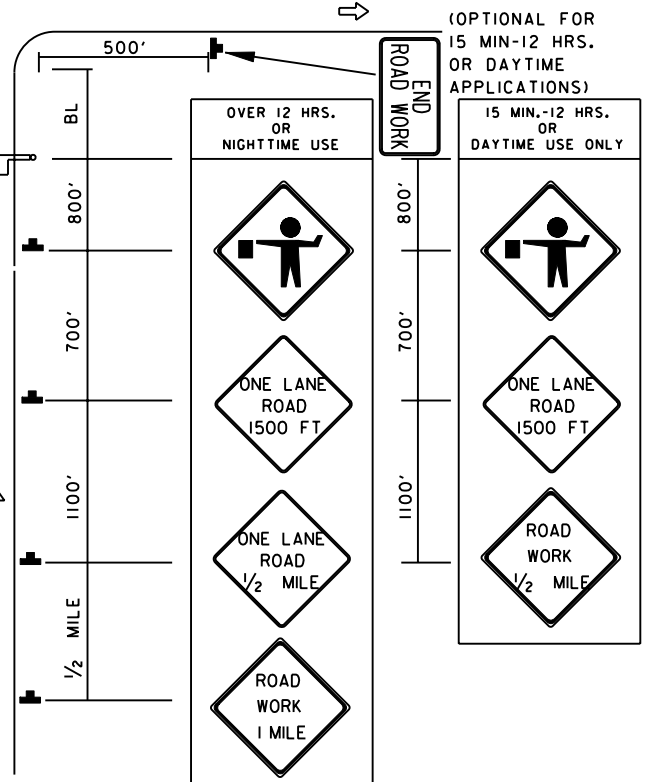
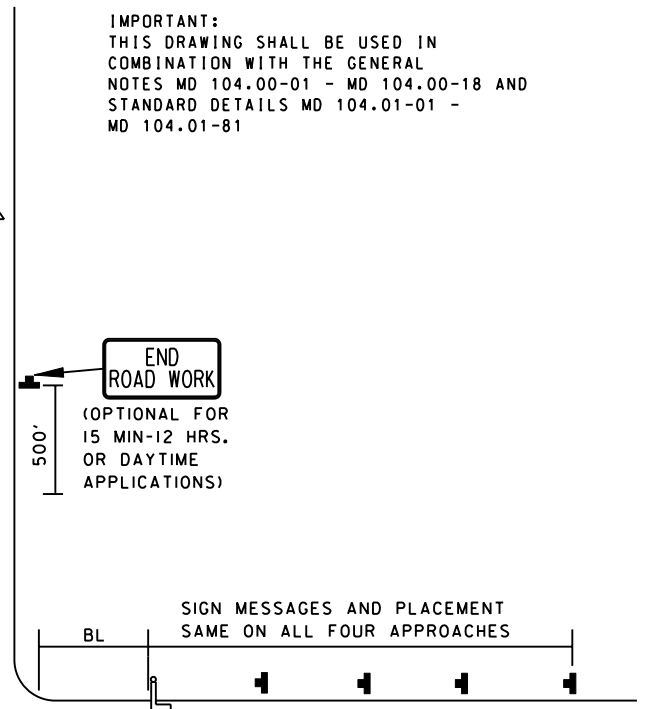
FLAGGER SHALL NEVER BE STATIONED MORE THAN 1000' AWAY FROM THE ADVANCE FLAGGER SIGN.

THE ENGINEER SHOULD CONSIDER ADDITIONAL, ADJACENT LANE CLOSURES WHEN THE POSSIBILITY OF UNPLANNED TRAVELWAY ENCROACHMENTS EXISTS.

(OPTIONAL FOR 15 MIN-12 HRS. OR DAYTIME APPLICATIONS)



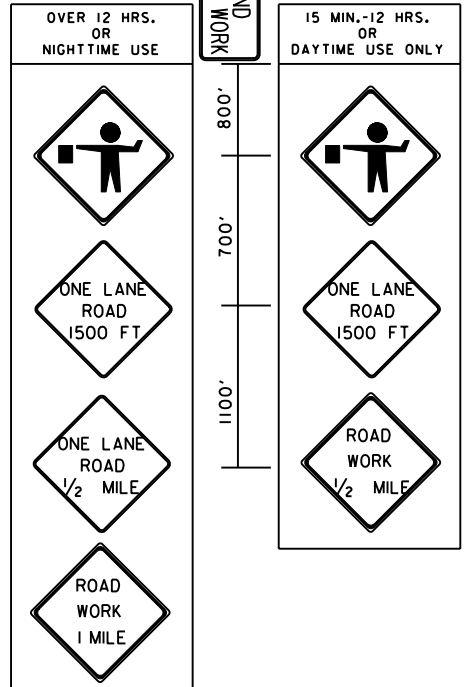
IMPORTANT:
THIS DRAWING SHALL BE USED IN COMBINATION WITH THE GENERAL NOTES MD 104.00-01 - MD 104.00-18 AND STANDARD DETAILS MD 104.01-01 - MD 104.01-81



KEY:

- ■ CHANNELIZING DEVICES
- SIGN SUPPORT
- ↑ DIRECTION OF TRAFFIC
- ▨ WORK SITE
- FLAGGER

(OPTIONAL FOR 15 MIN-12 HRS. OR DAYTIME APPLICATIONS)



SPECIFICATION 104	CATEGORY CODE ITEMS
APPROVED	 DIRECTOR - OFFICE OF TRAFFIC AND SAFETY
SHA State Highway Administration	APPROVAL • SHA REVISIONS
	APPROVAL • FEDERAL HIGHWAY ADMINISTRATION
	APPROVAL 8-20-03 REVISIONS 8-11-10
	APPROVAL 9-23-03 REVISIONS 7-29-10

Maryland Department of Transportation
STATE HIGHWAY ADMINISTRATION
STANDARDS FOR HIGHWAYS AND INCIDENTAL STRUCTURES
INTERSECTION FLAGGING OPERATION
2-LANE, 2-WAY GREATER THAN 40 MPH

STANDARD NO. MD 104.02-13