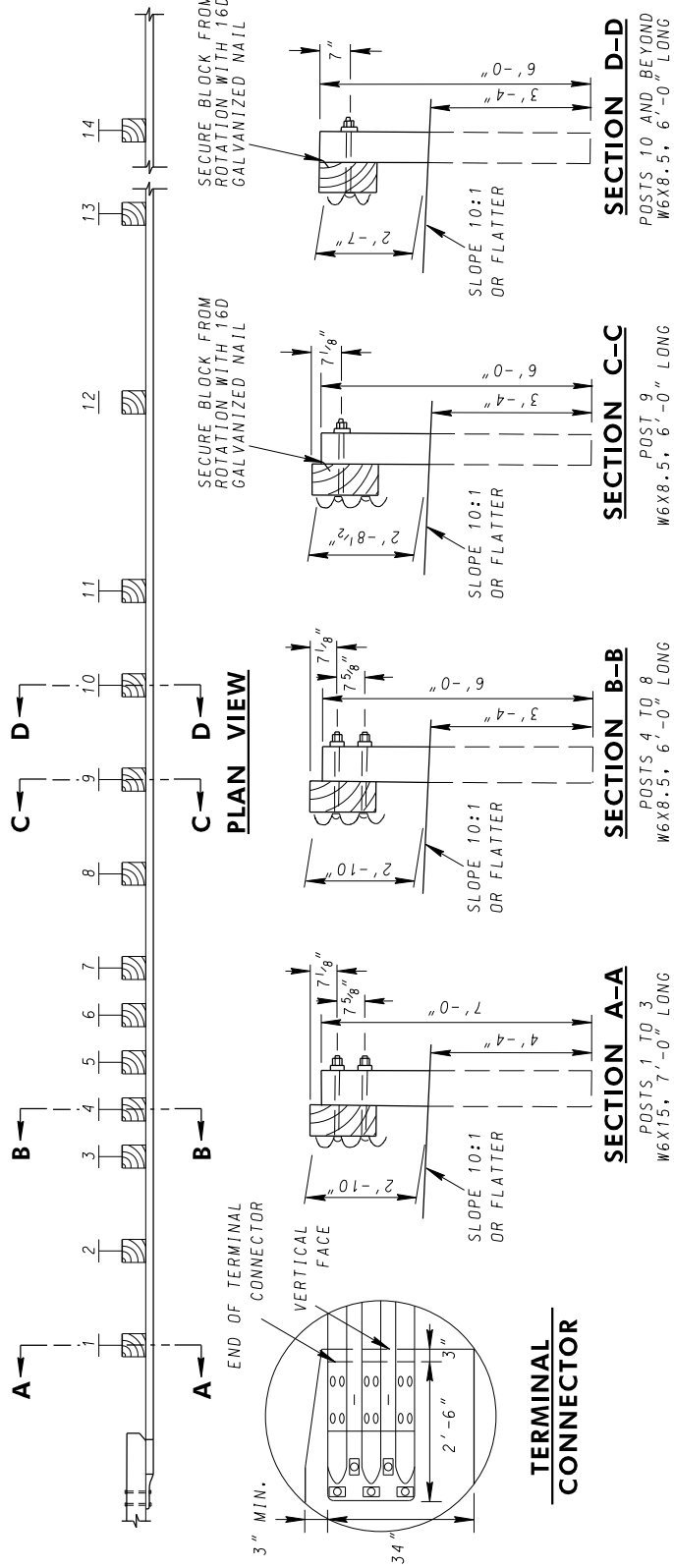


**ELEVATION VIEW**



**TERMINAL CONNECTOR**

**NOTES**

1. ALL BLOCKOUTS TO BE EITHER 6"x12"x19" (THRIE-BEAM) OR 6"x12"x14" (W-BEAM).
2. THRIE-BEAM TERMINAL CONNECTOR, THRIE-BEAM SECTIONS, AND W-BEAM SECTIONS SHALL BE LAPPED IN THE DIRECTION OF TRAFFIC.
3. THE TRAFFIC BARRIER THRIE-BEAM ANCHORAGE AT BRIDGE END POSTS SHALL BE PLACED ON SLOPES 10:1 OR FLATTER.
4. FOR THRIE-BEAM DETAILS, INCLUDING STEEL POSTS, WOOD OFFSET BLOCKS, AND SPLICES, SEE STD. MD 605.41-02.
5. FOR TERMINAL CONNECTOR AND TRANSITION SECTION, SEE STD. MD 605.41-02.
6. A 4" CURB MAY BE ADDED BELOW THE TRAFFIC BARRIER THRIE-BEAM SYSTEM.

<b>SPECIFICATION</b> 605	<b>CATEGORY CODE ITEMS</b>
<b>APPROVED</b>	<i>[Signature]</i> DIRECTOR - OFFICE OF HIGHWAY DEVELOPMENT
<b>APPROVAL SHA REVISIONS</b>	<b>APPROVAL FEDERAL HIGHWAY ADMINISTRATION</b>
<b>APPROVAL</b> 2-25-20	<b>APPROVAL</b> 2-24-20
<b>REVISED</b>	<b>REVISED</b>
<b>REVISED</b>	<b>REVISED</b>
<b>REVISED</b>	<b>REVISED</b>

**MDOT** MARYLAND DEPARTMENT OF TRANSPORTATION  
STATE HIGHWAY ADMINISTRATION

**STANDARDS FOR HIGHWAYS AND INCIDENTAL STRUCTURES  
TRAFFIC BARRIER THRIE-BEAM  
ANCHORAGE TO VERTICAL FACE**

**STANDARD NO. 605.41**