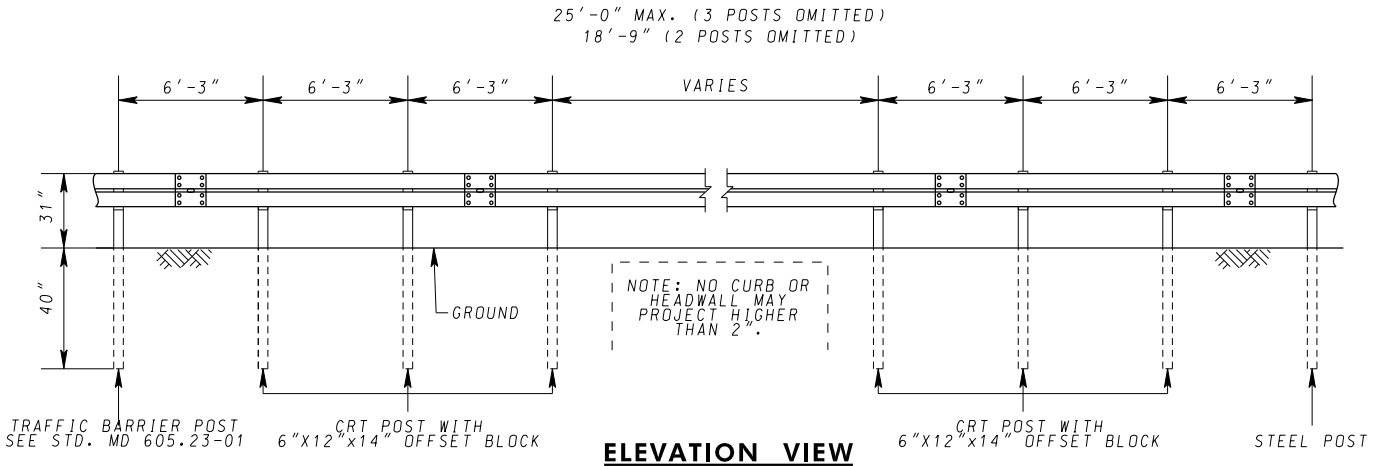
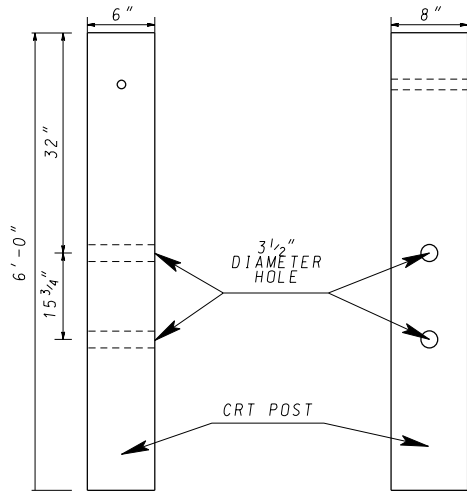


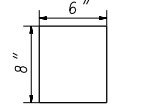
**PLAN VIEW**



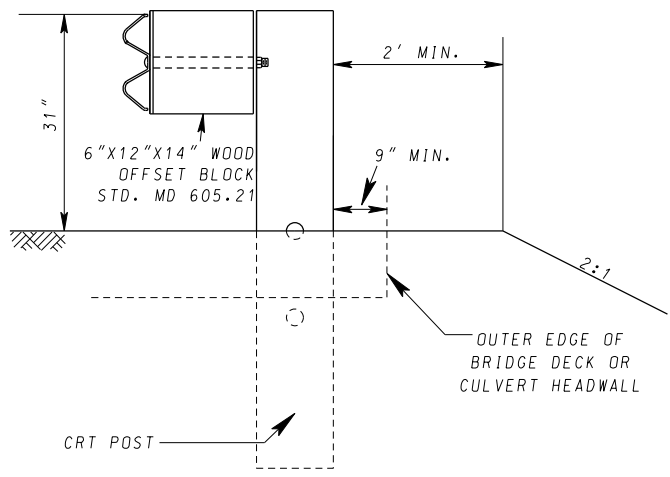
**ELEVATION VIEW**



**FRONT VIEW      SIDE VIEW**



**TOP VIEW**



**SECTION VIEW**

**CONTROLLED RELEASE TERMINAL (CRT) WOOD POST**

**NOTES**

1. THE TRAFFIC BARRIER W-BEAM SECTIONS SHALL BE LAPPED IN THE DIRECTION OF TRAFFIC.
2. FOR OMITTING ONE POST, SEE STD. MD 605.23.
3. AT LEAST 62 1/2 FT OF TRAFFIC BARRIER, INCLUDING END ANCHORAGE, SHALL BE INSTALLED BOTH UPSTREAM AND DOWNSTREAM FROM THE CRT POSTS.

<b>SPECIFICATION</b> 605	<b>CATEGORY CODE ITEMS</b>	
<b>APPROVED</b>	<i>[Signature]</i> DIRECTOR - OFFICE OF HIGHWAY DEVELOPMENT	
<b>APPROVAL SHA REVISIONS</b>	<b>APPROVAL FEDERAL HIGHWAY ADMINISTRATION</b>	
<b>APPROVAL</b>	11-10-99	<b>APPROVAL</b> 7-2-97
<b>REVISED</b>	6-22-18	<b>REVISED</b> 4-30-18
<b>REVISED</b>	1-9-20	<b>REVISED</b> 12-23-19
<b>REVISED</b>	2-25-20	<b>REVISED</b> 2-24-20


**MARYLAND DEPARTMENT OF TRANSPORTATION**  
 STATE HIGHWAY ADMINISTRATION  
**STANDARDS FOR HIGHWAYS AND INCIDENTAL STRUCTURES**  
**TRAFFIC BARRIER W-BEAM**  
**LONG SPAN SYSTEM**

**STANDARD NO.      MD 605.26**