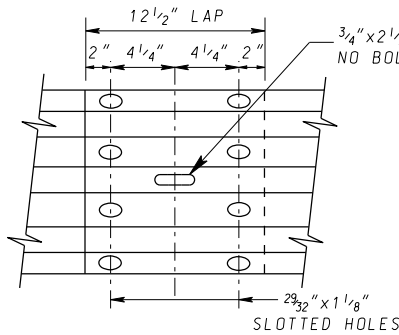
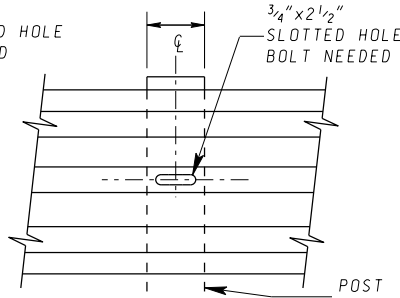


ELEVATION VIEW



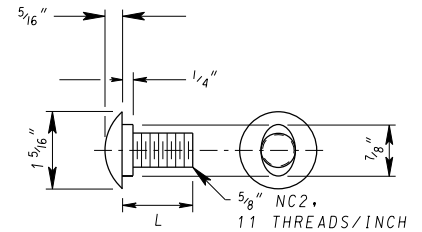
FRONT VIEW

SPLICE
(BOLTS NOT SHOWN)



FRONT VIEW

POST WITH W-BEAM RAIL
(BOLT NOT SHOWN)



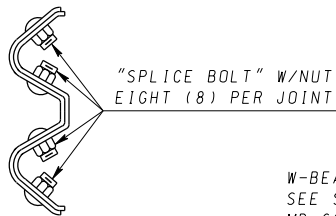
L=1 1/4" FOR SPLICE (FULL LENGTH THREADS)

L=2" FOR SPLICE WITH NESTED RAIL BOLT (FULL LENGTH THREADS)

L=10" FOR STEEL POST WITH 8" BLOCKOUT BOLT SEE NOTE

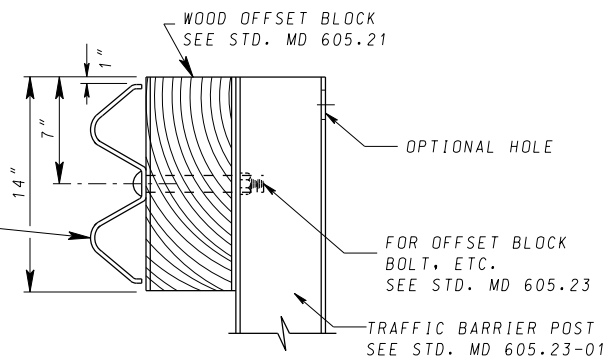
L=14" FOR STEEL POST WITH 12" BLOCKOUT BOLT

BOLT



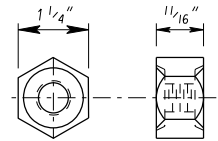
SIDE VIEW

SPLICE



SIDE VIEW

POST WITH W-BEAM RAIL



ALTERNATE-SINGLE RECESS NUTS MAY BE SUBSTITUTED

5/8" NC2, 11 THREADS/INCH

1 5/16" DIA. X 3/32" DEEP RECESS TWO SIDES

NUT

NOTES

1. FOR COMPOSITE OFFSET BLOCKS SEE NOTE 5 ON STD. MD 605.21.
2. THE CONTRACTOR HAS THE OPTION TO USE SHORTER BOLTS WITH A MINIMUM OF 1/2" PROTRUSION BEYOND NUT.
3. WITH ENGINEER'S APPROVAL, ONE POST CAN BE OMITTED WITHOUT OTHER CHANGES. A MINIMUM OF EIGHT POSTS MUST BE INSTALLED BETWEEN OMITTED POSTS.

SPECIFICATION 605	CATEGORY CODE ITEMS	
APPROVED	<i>[Signature]</i> DIRECTOR - OFFICE OF HIGHWAY DEVELOPMENT	
APPROVAL SHA REVISIONS	APPROVAL FEDERAL HIGHWAY ADMINISTRATION	
APPROVAL 5-6-76	APPROVAL 9-30-76	
REVISED 6-22-18	REVISED 4-30-18	
REVISED 1-9-20	REVISED 12-23-19	
REVISED 2-25-20	REVISED 2-24-20	

MOT MARYLAND DEPARTMENT OF TRANSPORTATION
STATE HIGHWAY ADMINISTRATION

**STANDARDS FOR HIGHWAYS AND INCIDENTAL STRUCTURES
TRAFFIC BARRIER W-BEAM,
W-BEAM SPLICES AND
WOOD OFFSET BLOCK**

STANDARD NO. MD 605.23