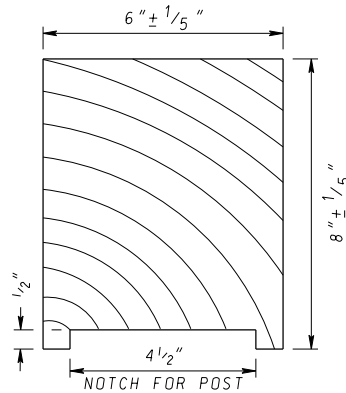
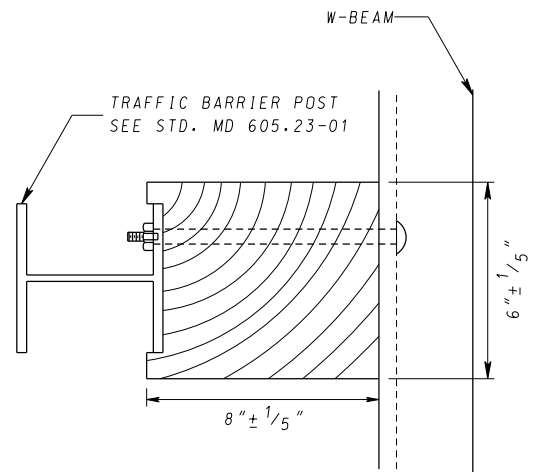


FRONT VIEW

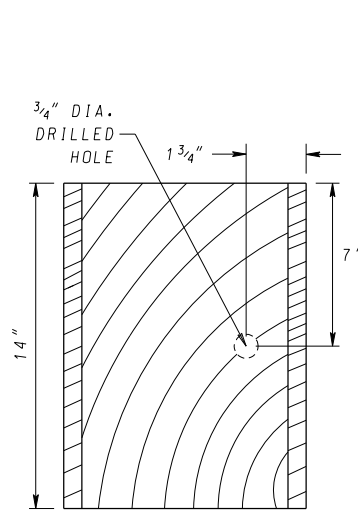


TOP VIEW

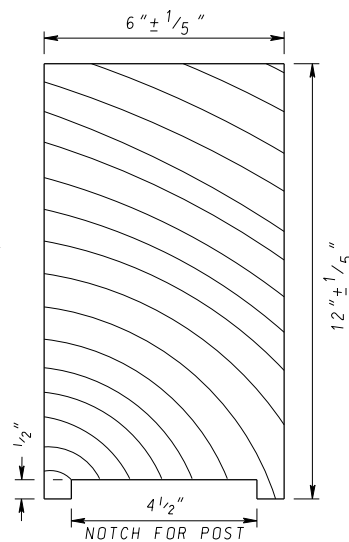
6"X8"X14" WOOD OFFSET BLOCK



**TOP VIEW
(TRAFFIC BARRIER POST
WITH 6"X8"X14" BLOCK)**

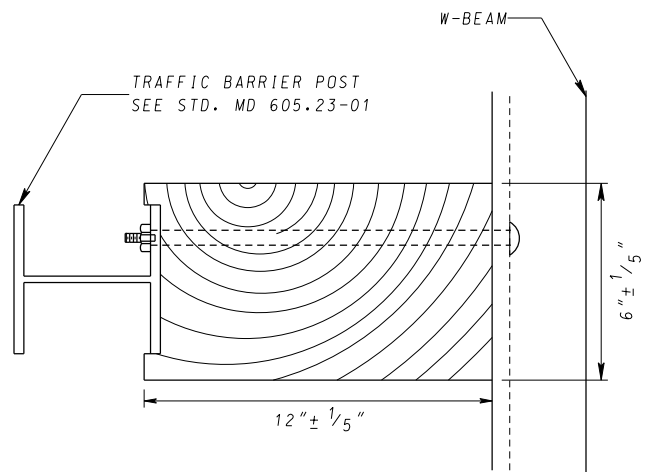


FRONT VIEW



TOP VIEW

6"X12"X14" WOOD OFFSET BLOCK



**TOP VIEW
(TRAFFIC BARRIER POST
WITH 6"X12"X14" BLOCK)**

NOTES

1. WOOD OFFSET BLOCKS 6"x8"x14" TO BE USED UNLESS OTHERWISE SPECIFIED OR DIRECTED BY THE ENGINEER.
2. FOR BOLT AND BOLT NUT DETAILS, SEE STD. MD 605.23.
3. COMPOSITE OFFSET BLOCKS THAT ARE APPROVED BY THE ADMINISTRATION MAY BE USED IN LIEU OF WOOD OFFSET BLOCKS (EITHER DUE TO CONTRACTOR'S CHOICE OR WHEN SPECIFIED IN THE CONTRACT DOCUMENTS). REFER TO OPL FOR APPROVED SUBSTITUTES.

SPECIFICATION 605	CATEGORY CODE ITEMS	
APPROVED	<i>[Signature]</i> DIRECTOR - OFFICE OF HIGHWAY DEVELOPMENT	
APPROVAL	SH A REVISIONS	FEDERAL HIGHWAY ADMINISTRATION
APPROVAL	11-10-99	APPROVAL 7-2-99
REVISED	4-17-06	REVISED 4-5-06
REVISED	1-9-20	REVISED 12-23-19
REVISED	2-25-20	REVISED 2-24-20

MDOT MARYLAND DEPARTMENT OF TRANSPORTATION
STATE HIGHWAY ADMINISTRATION

STANDARDS FOR HIGHWAYS AND INCIDENTAL STRUCTURES

WOOD OFFSET BLOCK

STANDARD NO.

MD 605.21