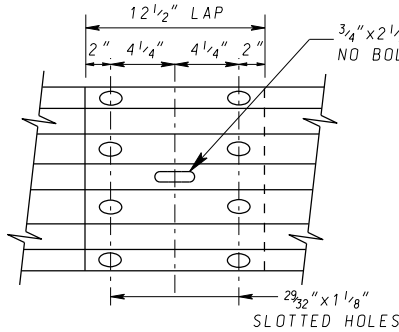
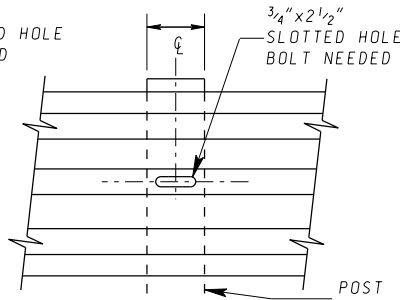


**ELEVATION VIEW**



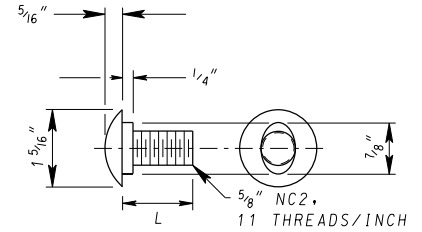
**FRONT VIEW**

SPLICE  
(BOLTS NOT SHOWN)



**FRONT VIEW**

POST WITH W-BEAM RAIL  
(BOLT NOT SHOWN)



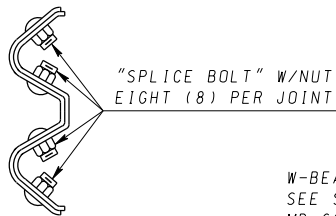
L=1 1/4" FOR SPLICE BOLT  
(FULL LENGTH THREADS)

L=2" FOR SPLICE WITH  
NESTED RAIL BOLT  
(FULL LENGTH THREADS)

L=10" FOR STEEL POST WITH  
8" BLOCKOUT BOLT  
SEE NOTE

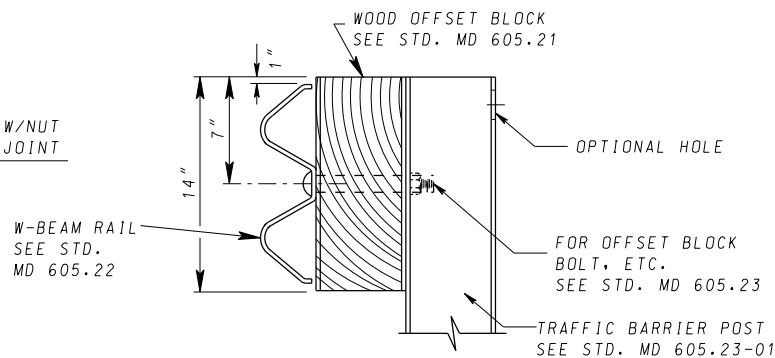
L=14" FOR STEEL POST WITH  
12" BLOCKOUT BOLT

**BOLT**



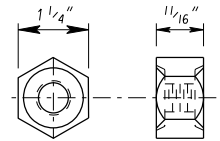
**SIDE VIEW**

SPLICE



**SIDE VIEW**

POST WITH W-BEAM RAIL



ALTERNATE-SINGLE  
RECESS NUTS MAY  
BE SUBSTITUTED

5/8" NC2, 11 THREADS/INCH

15/16" DIA. X 3/32"  
DEEP RECESS TWO SIDES

**NUT**

**NOTES**

- FOR COMPOSITE OFFSET BLOCKS SEE NOTE 5 ON STD. MD 605.21.
- THE CONTRACTOR HAS THE OPTION TO USE SHORTER BOLTS WITH A MINIMUM OF 1/2" PROTRUSION BEYOND NUT.

<b>SPECIFICATION</b> 605	<b>CATEGORY CODE ITEMS</b>	
<b>APPROVED</b>	<i>[Signature]</i> DIRECTOR - OFFICE OF HIGHWAY DEVELOPMENT	
<b>APPROVAL SHA REVISIONS</b>	<b>APPROVAL FEDERAL HIGHWAY ADMINISTRATION</b>	
<b>APPROVAL</b> 5-6-76	<b>APPROVAL</b> 9-30-76	
<b>REVISED</b> 12-21-17	<b>REVISED</b> 12-20-17	
<b>REVISED</b> 6-22-18	<b>REVISED</b> 4-30-18	
<b>REVISED</b> 1-9-20	<b>REVISED</b> 12-23-19	

**MDOT** MARYLAND DEPARTMENT OF TRANSPORTATION  
STATE HIGHWAY ADMINISTRATION

**STANDARDS FOR HIGHWAYS AND INCIDENTAL STRUCTURES  
TRAFFIC BARRIER W-BEAM,  
W-BEAM SPLICES AND  
WOOD OFFSET BLOCK**

**STANDARD NO. MD 605.23**