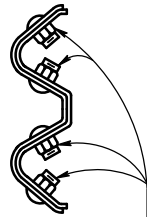
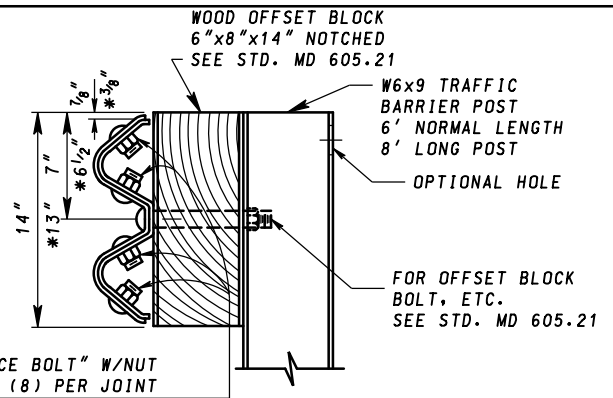


FRONT VIEW
(SPLICE BOLTS NOT SHOWN)



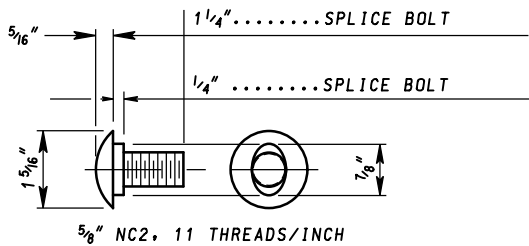
SIDE VIEW
MID-SPAN SPLICE



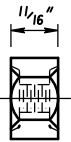
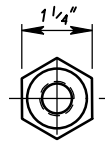
SIDE VIEW
POST SPLICE

* WELDED OR ROLLED W 6X8.5 POSTS ARE OPTIONAL SUBSTITUTE TO W 6X9 POST

TRAFFIC BARRIER W BEAM SPLICE JOINTS



5/8" NC2, 11 THREADS/INCH
"SPLICE BOLT"
(EIGHT (8) PER JOINT)
(1 1/4" LONG)

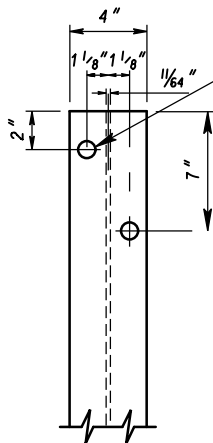


ALTERNATE-SINGLE RECESS NUTS
MAY BE SUBSTITUTED

5/8" NC2, 11 THREADS/INCH

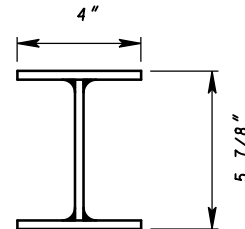
1 5/16" DIA. x 3/32" DEEP RECESS TWO SIDES

NUT
(8 PER MID-SPAN SPLICE,
9 PER POST SPLICE)



FRONT VIEW POST

OPTIONAL HOLE- THIS HOLE MAY BE DRILLED THROUGH BOTH POST FLANGES TO CREATE AN ADDITIONAL HOLE FOR RACKING POSTS WHEN GAVANIZING. (HOLE LOCATION SHOWN ON SIDE VIEW)



PLAN VIEW ALTERNATE
W6x8.5 METAL POST

(WELDED VERSION SHOWN
ON STD MD 605.23-01)

NOTES

- EXCEPT FOR THE DIMENSIONS SHOWN ON THE ALTERNATE WELDED W6x8.5 PLAN VIEW, ALL DIMENSIONS FOR HOLES, HOLE SPACING, LENGTHS, ETC. WILL REMAIN THE SAME AS THEY ARE FOR THE W6x9 POSTS AND WOOD OFFSET BLOCKS.
- FOR COMPOSITE OFFSET BLOCKS SEE NOTE 5 ON MD 605.21
- POSTS SHALL BE SPACED 6'-3" C/C, UNLESS OTHERWISE STATED ON THE PLANS OR DIRECTED BY THE ENGINEER.
- UNLESS OTHERWISE SPECIFIED, SPLICES SHALL BE PLACED AT THE MIDPOINT BETWEEN POSTS
- FOR ALL SPLICES, LAP W BEAM PANELS IN DIRECTION OF TRAFFIC
- TRAFFIC BARRIER IS BASED ON A MASH 2016 COMPLIANT DESIGN

SPECIFICATION 605	CATEGORY CODE ITEMS	
APPROVED	<i>[Signature]</i> DIRECTOR - OFFICE OF HIGHWAY DEVELOPMENT	
APPROVAL REVISIONS	SHA	FEDERAL HIGHWAY ADMINISTRATION
APPROVAL	5-6-76	APPROVAL 9-30-76
REVISED	3-29-07	REVISED 10-25-06
REVISED	12-21-17	REVISED 12-20-17
REVISED	6-22-18	REVISED 4-30-18

MOT MARYLAND DEPARTMENT OF TRANSPORTATION
STATE HIGHWAY ADMINISTRATION

STANDARDS FOR HIGHWAYS AND INCIDENTAL STRUCTURES
**TRAFFIC BARRIER W BEAM,
W BEAM SPLICES, AND
WOOD OFFSET BLOCK**

STANDARD NO. MD 605.23