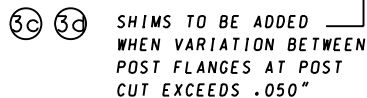
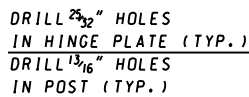
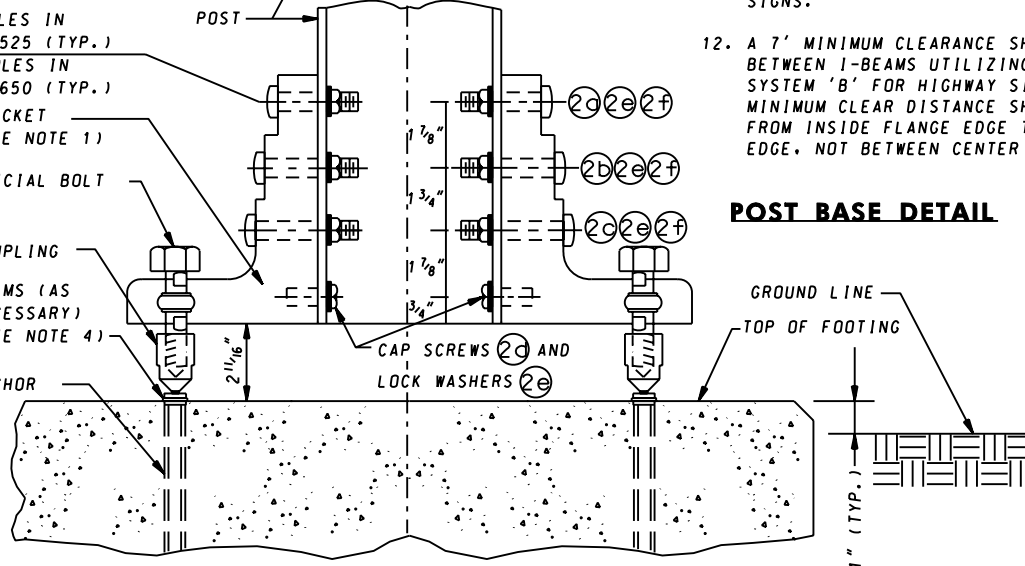
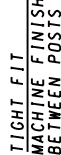
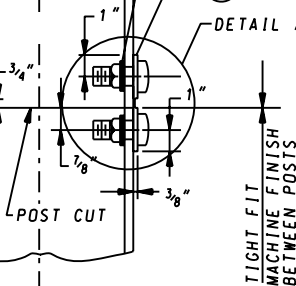




STEEL I-BEAM SIGN POST OR  
8" SQUARE TUBE SIGN POST



DRILL  $\frac{9}{16}$ " HOLES IN  
POST FOR B-525 (TYP.)  
DRILL  $\frac{11}{16}$ " HOLES IN  
POST FOR B-650 (TYP.)



### POST BASE DETAIL

1. THE BRACKET NUMBER IS STAMPED ON THE BRACKET.
2. BOLT THE BRACKETS TO POST. THEN PLACE POST AND CONNECTED BRACKET TO BREAKAWAY COUPLING.
3. ALL BOLTS TO BE TIGHTENED IN ACCORDANCE WITH THE MANUFACTURER'S SPECIFICATIONS.
4. REFER TO OTHER BREAKAWAY BASE SUPPORT SYSTEM FOR HIGHWAY SIGNS STANDARD PLATES FOR HINGE PLATE, SHIM AND BRACKET DETAILS.
5. REFER TO OTHER BREAKAWAY BASE SUPPORT SYSTEM FOR HIGHWAY SIGNS STANDARD PLATES FOR ANCHOR, BREAKAWAY COUPLING AND COUPLING BOLT DETAILS.
6. W6X9 SIGN POSTS SHALL NOT BE USED WITH BREAKAWAY BASE SUPPORT SYSTEM 'B'. FOR W6X9 SIGN POSTS, SEE BREAKAWAY BASE SUPPORT SYSTEM 'A' FOR HIGHWAY SIGNS.
7. REFER TO OTHER BREAKAWAY BASE SUPPORT SYSTEM FOR HIGHWAY SIGNS STANDARD PLATES FOR ADJUSTMENTS TO CONCRETE FOUNDATIONS TO SUIT VARIOUS GROUND SLOPES.
8. DESIGNATION B-525 IS FOR 6" (LARGER THAN W6X9) AND 8" BEAM SIZES OR 5" AND 6" SQUARE TUBE SIGN POST.
9. DESIGNATION B-650 IS FOR 10", 12", 14", 16", 18" AND 21" BEAM SIZES OR 7" AND 8" SQUARE TUBE SIGN POST.
10. (N) REFER TO OTHER BREAKAWAY BASE SUPPORT SYSTEM FOR HIGHWAY SIGNS STANDARD PLATES FOR MATERIAL PARTS.
11. HINGE PLATES SHALL NOT BE USED WITH SINGLE STEEL SUPPORT INSTALLATIONS FOR SIGNS.
12. A 7' MINIMUM CLEARANCE SHALL BE MAINTAINED BETWEEN I-BEAMS UTILIZING BREAKAWAY SUPPORT SYSTEM 'B' FOR HIGHWAY SIGNS. THE 7' MINIMUM CLEAR DISTANCE SHALL BE MEASURED FROM INSIDE FLANGE EDGE TO INSIDE FLANGE EDGE, NOT BETWEEN CENTER OF I-BEAMS.

**Maryland Department of Transportation**  
**STATE HIGHWAY ADMINISTRATION**  
STANDARDS FOR HIGHWAYS AND INCIDENTAL STRUCTURES  
**BREAKAWAY BASE SUPPORT SYSTEM 'B'**  
**FOR HIGHWAY SIGNS**

MD 821.03-01