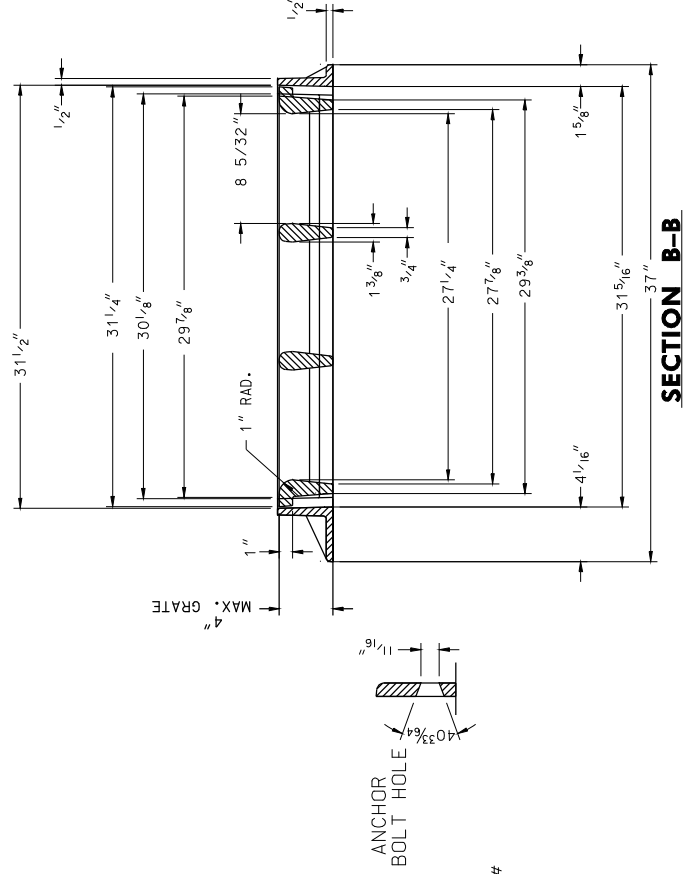


SECTION A-A





NOTES:

MATERIAL: CAST GRAY IRON ASTM A-48,
CLASS 35B
FINISH: NO PAINT
WEIGHT (Min.): FRAME 163#, GRATE 295#

FRAMES TO BE CASTING WITH FLANGE CUT, AS SHOWN, WHEN INLET TO BE PLACED ADJACENT TO CURB OPENING FOR FULL FLANGE/DETAILS, REFER TO THE RESPECTIVE STANDARD PLATES FOR TYPE "S" INLET.

* CONTRACTOR IS RESPONSIBLE FOR CORRECT ORIENTATION OF THE CV-GRATE TOWARD THE DIRECTION OF FLOW.

SPECIFICATION 305		Maryland Department of Transportation STATE HIGHWAY ADMINISTRATION STANDARDS FOR HIGHWAYS AND INCIDENTAL STRUCTURES			
APPROVED	 DIRECTOR - OFFICE OF HIGHWAY DEVELOPMENT		CURVE VANE GRATE WITH FRAME FOR SINGLE TYPE S INLET (S-CV)		
 The State Highway Administration	APPROVAL • SHA REVISIONS	APPROVAL • FEDERAL HIGHWAY ADMINISTRATION	STANDARD NO. MD 379.02-01		
	APPROVAL 2-10-04	APPROVAL 3-31-04			
	REVISED 7-1-09	REVISED 7-27-09			
	REVISED	REVISED			